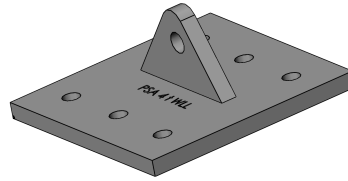


PSA 4t Lifting Plate – LP05

Technical Data



PSA post-installed Lifting Plate – 4 tonne Working Load Limit (WLL) lifting anchor.

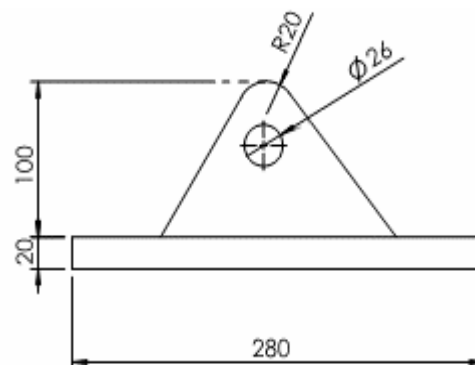
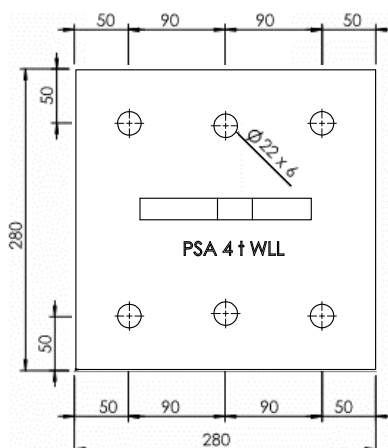
The most typical application is in instances where cast-in lifting anchors were missed or misplaced at the time of manufacturing.

PSA Lifting Plate is designed and manufactured in Australia in compliance with Australian Standards. Design Factor of Safety (FOS) in accordance with AS3850.2 - 2015 (multi-use lifting products)

Part No:	Product Description	WLL (tonne)	FOS
LP05	4 tonne Lifting Plate	4	5

Installation guidelines:

- Minimum concrete strength at the time of use: 25MPa
- PSA Lifting Plate lug orientation must be in-line with the lift direction
- For normal installations only use the Icons bolt PBA20115 in the (4) outer pre-drilled holes of the lifting plate. The additional inner, pre-drilled holes are used, only when the full depth drilling is restricted in the panel, such as striking reinforcement
Note: PBA20115 installed in accordance with manufacturer guidelines – Appendix A
- The location of the lifting plates requires a minimum 300mm panel edge distances from the nearest PBA20115 anchor. Refer to Erection Design Engineer for minimum edge distances, concrete strength, rigging arrangement and design certification

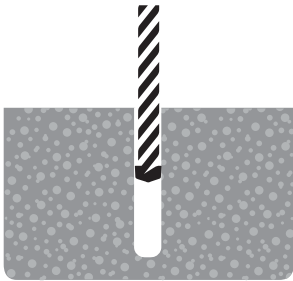


Note: Visually inspect lifting plates prior each use.

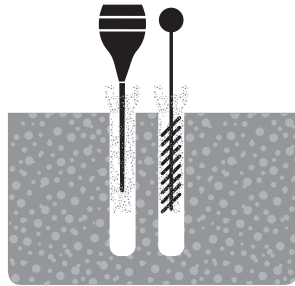
If any physical defects are observed, such as: bending, holes elongation, excessive rust, and etc. then discontinue use

Appendix A

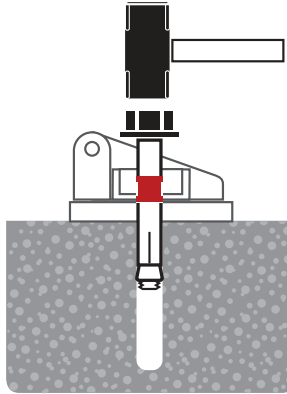
INSTALLATION



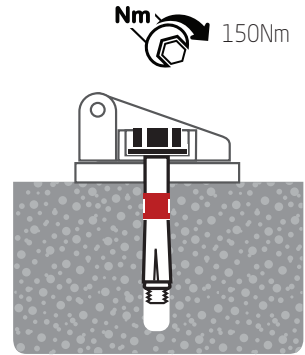
Drill a 20mm hole (Y-Cutter drill bit recommended) to the correct embedment, this should be no more than 80% of the base material thickness.



Blow and brush the hole clean of dust and other material.



Insert the anchor so the bolt head and washer seats firmly against the fixture.



Using a calibrated torque wrench tighten the anchor to 150Nm.