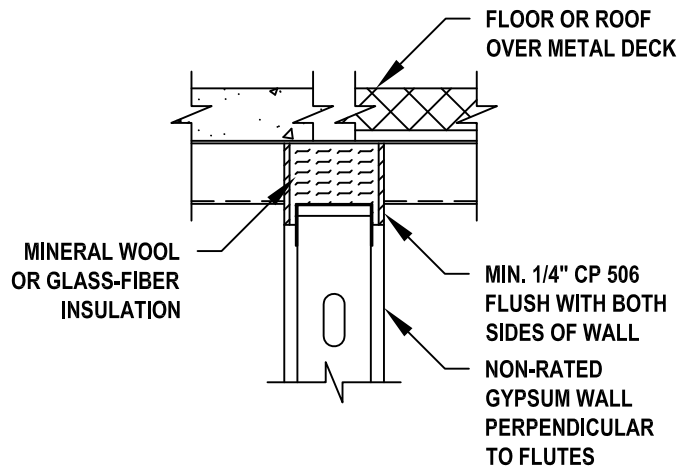
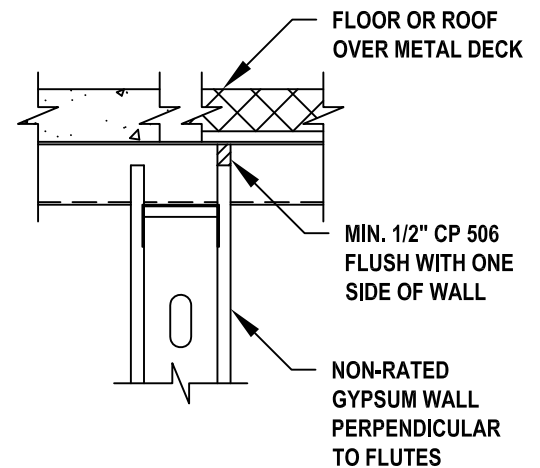
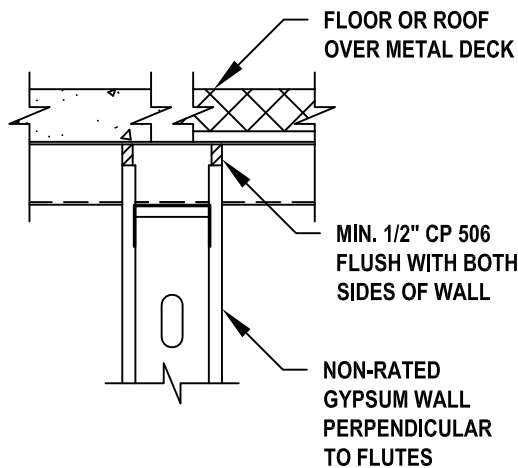
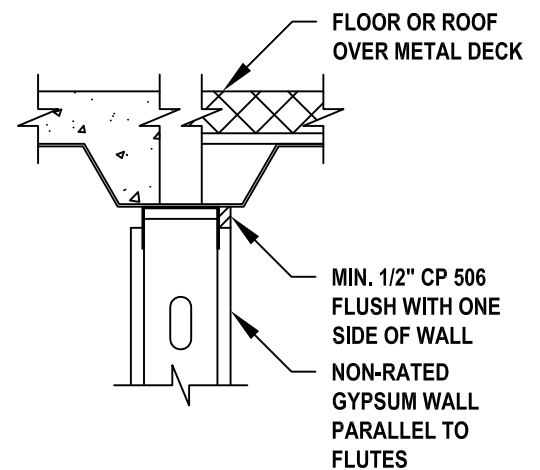
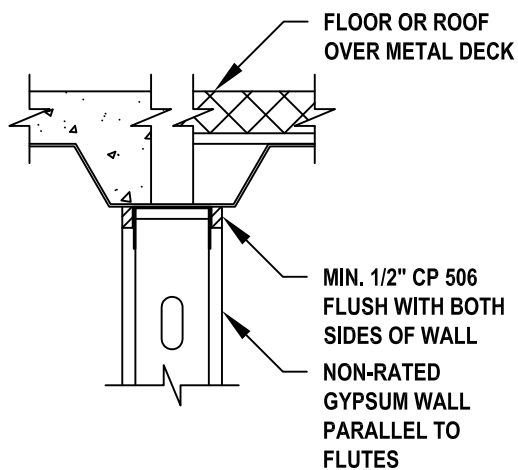
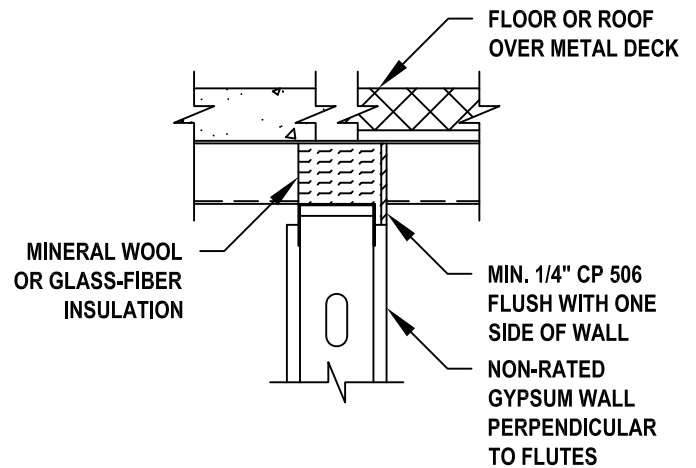


JOINT SYSTEM DETAIL FOR NON FIRE-RATED SMOKE PARTITIONS (EXAMPLES)

TWO-SIDED APPLICATIONS



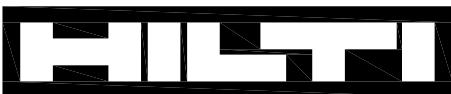
ONE-SIDED APPLICATIONS



J-506-1c.031912

LIMITATIONS :

- HILTI CP 506 SMOKE AND ACOUSTIC SEALANT MAY BE INSTALLED WHERE IT IS NECESSARY TO RESTRICT SMOKE MIGRATION THROUGH NON FIRE-RATED ASSEMBLIES.
- NOT FOR FIRE-RATED ASSEMBLIES.
- NOT FOR USE WITH CPVC PIPING.
- REFER TO PRODUCT LITERATURE FOR COMPLETE DETAILS ON INSTALLATION, SUITABLE APPLICATIONS, AND LIMITATIONS.
- FOR APPLICATIONS THAT DO NOT MEET THE CONDITIONS ABOVE, CONTACT HILTI TECHNICAL SUPPORT.
- THESE DETAILS REPRESENT GENERAL INSTALLATION GUIDELINES TO SATISFY SMOKE PARTITION SEALING REQUIREMENTS OF THE INTERNATIONAL BUILDING CODE (2003, 2006, OR 2009). OBTAIN AUTHORITY HAVING JURISDICTION APPROVAL PRIOR TO INSTALLATION.



HILTI, Inc.
Tulsa, Oklahoma USA (800) 879-8000

Sheet	1 of 1
Scale	7/64" = 1"
Date	Mar. 19, 2012

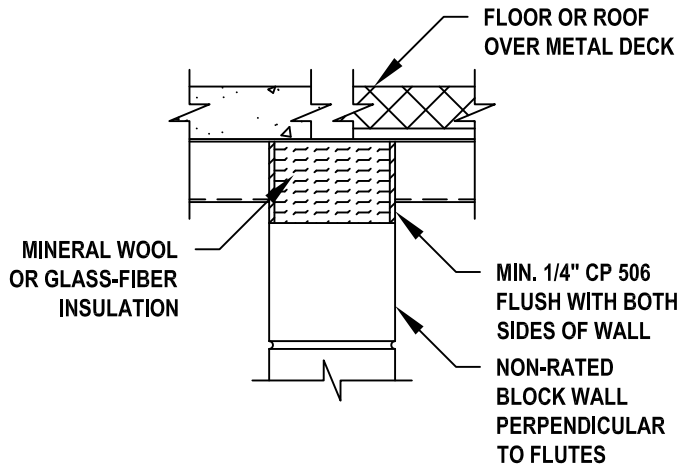
Drawing No.

J-506-1c

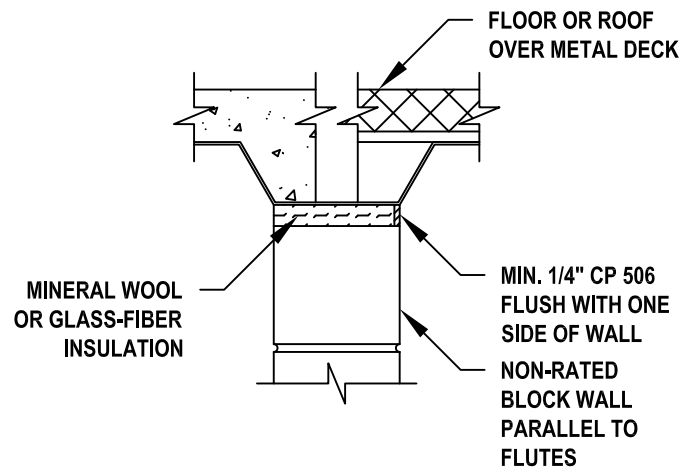
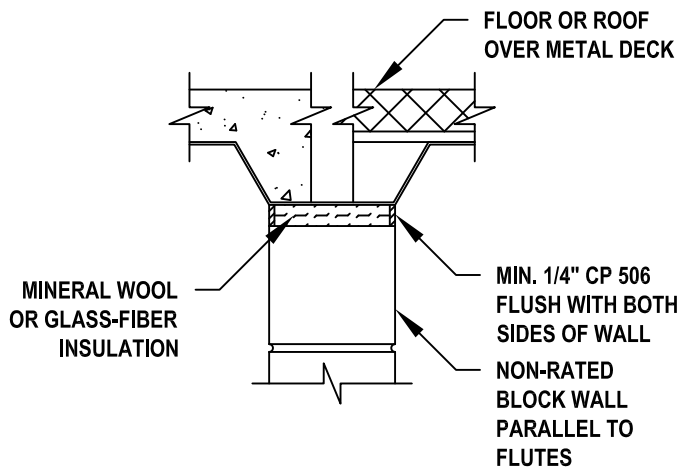
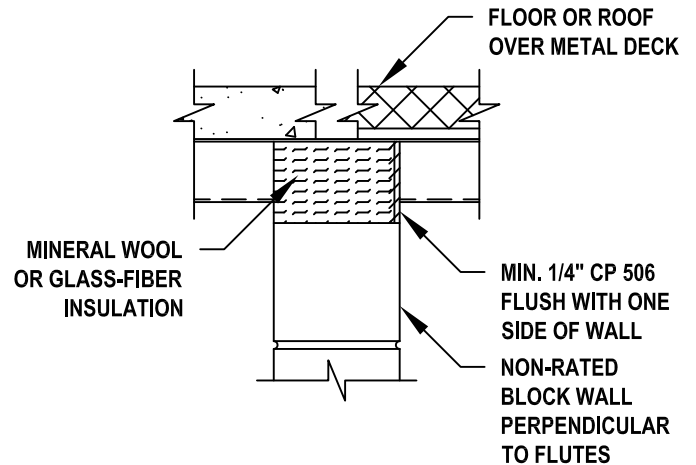
Saving Lives through Innovation and Education

JOINT SYSTEM DETAIL FOR NON FIRE-RATED SMOKE PARTITIONS (EXAMPLES)

TWO-SIDED APPLICATIONS



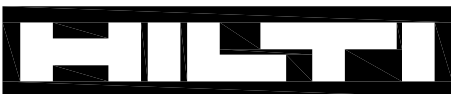
ONE-SIDED APPLICATIONS



J-506-2c.031912

LIMITATIONS :

- HILTI CP 506 SMOKE AND ACOUSTIC SEALANT MAY BE INSTALLED WHERE IT IS NECESSARY TO RESTRICT SMOKE MIGRATION THROUGH NON FIRE-RATED ASSEMBLIES.
- NOT FOR FIRE-RATED ASSEMBLIES.
- NOT FOR USE WITH CPVC PIPING.
- REFER TO PRODUCT LITERATURE FOR COMPLETE DETAILS ON INSTALLATION, SUITABLE APPLICATIONS, AND LIMITATIONS.
- FOR APPLICATIONS THAT DO NOT MEET THE CONDITIONS ABOVE, CONTACT HILTI TECHNICAL SUPPORT.
- THESE DETAILS REPRESENT GENERAL INSTALLATION GUIDELINES TO SATISFY SMOKE PARTITION SEALING REQUIREMENTS OF THE INTERNATIONAL BUILDING CODE (2003, 2006, OR 2009). OBTAIN AUTHORITY HAVING JURISDICTION APPROVAL PRIOR TO INSTALLATION.



HILTI, Inc.
Tulsa, Oklahoma USA (800) 879-8000

Sheet	1 of 1
Scale	7/64" = 1"
Date	Mar. 19, 2012

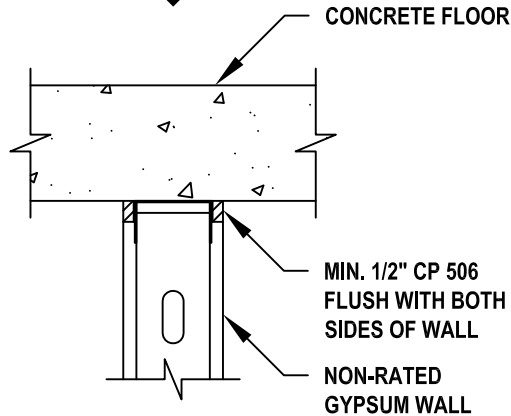
Drawing No.

J-506-2c

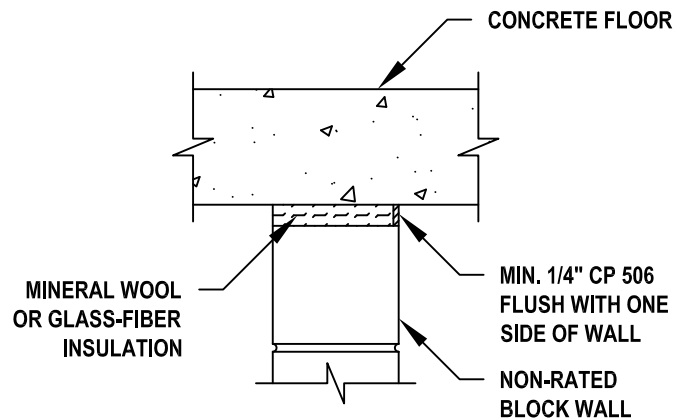
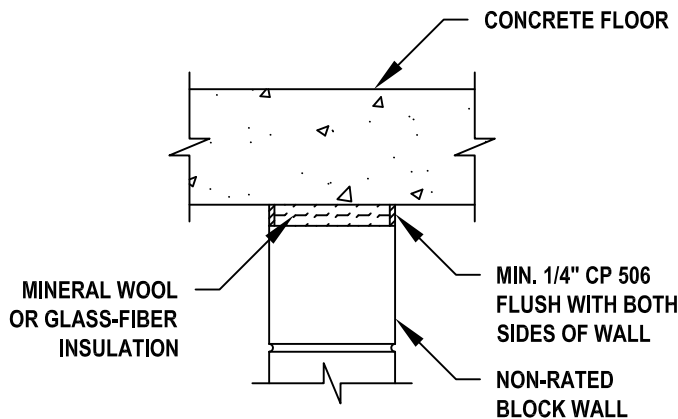
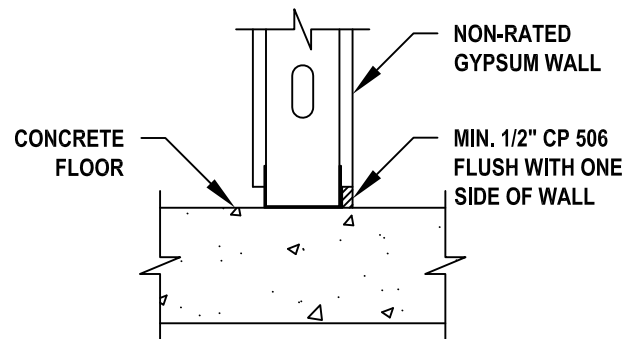
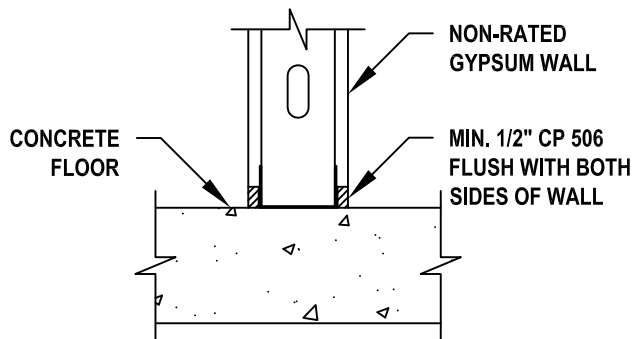
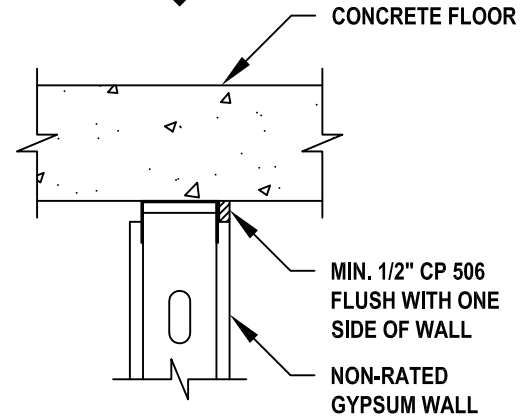
Saving Lives through Innovation and Education

JOINT SYSTEM DETAIL FOR NON FIRE-RATED SMOKE PARTITIONS (EXAMPLES)

TWO-SIDED APPLICATIONS



ONE-SIDED APPLICATIONS



J-506-3b.120911

LIMITATIONS :

- HILTI CP 506 SMOKE AND ACOUSTIC SEALANT MAY BE INSTALLED WHERE IT IS NECESSARY TO RESTRICT SMOKE MIGRATION THROUGH NON FIRE-RATED ASSEMBLIES.
- NOT FOR FIRE-RATED ASSEMBLIES.
- NOT FOR USE WITH CPVC PIPING.
- REFER TO PRODUCT LITERATURE FOR COMPLETE DETAILS ON INSTALLATION, SUITABLE APPLICATIONS, AND LIMITATIONS.
- FOR APPLICATIONS THAT DO NOT MEET THE CONDITIONS ABOVE, CONTACT HILTI TECHNICAL SUPPORT.
- THESE DETAILS REPRESENT GENERAL INSTALLATION GUIDELINES TO SATISFY SMOKE PARTITION SEALING REQUIREMENTS OF THE INTERNATIONAL BUILDING CODE (2003, 2006, OR 2009). OBTAIN AUTHORITY HAVING JURISDICTION APPROVAL PRIOR TO INSTALLATION.



HILTI, Inc.
Tulsa, Oklahoma USA (800) 879-8000

Sheet 1 of 1
Scale 7/64" = 1"
Date Dec. 09, 2011

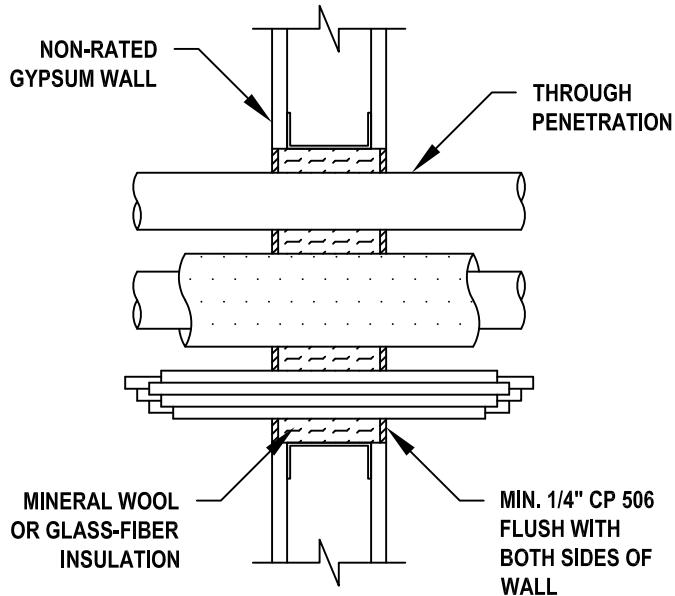
Drawing No.

J-506-3b

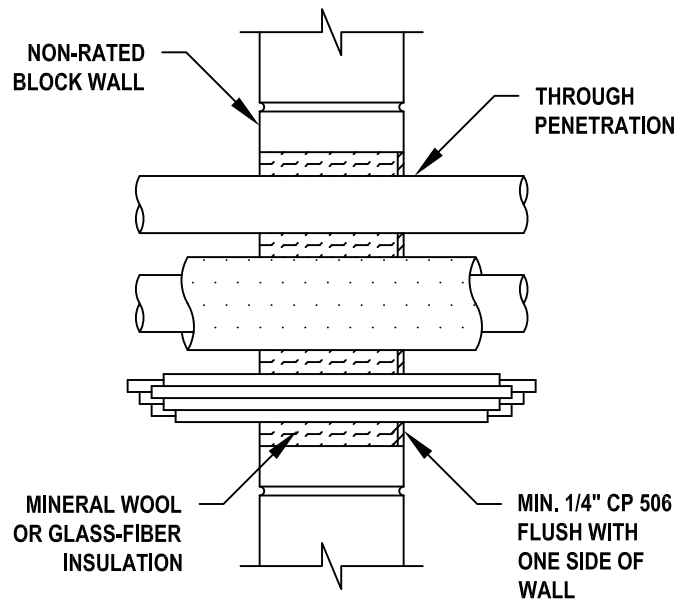
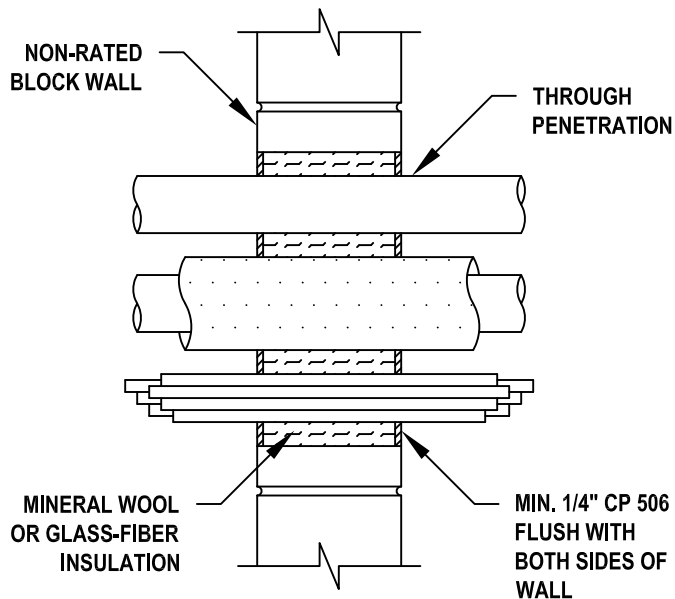
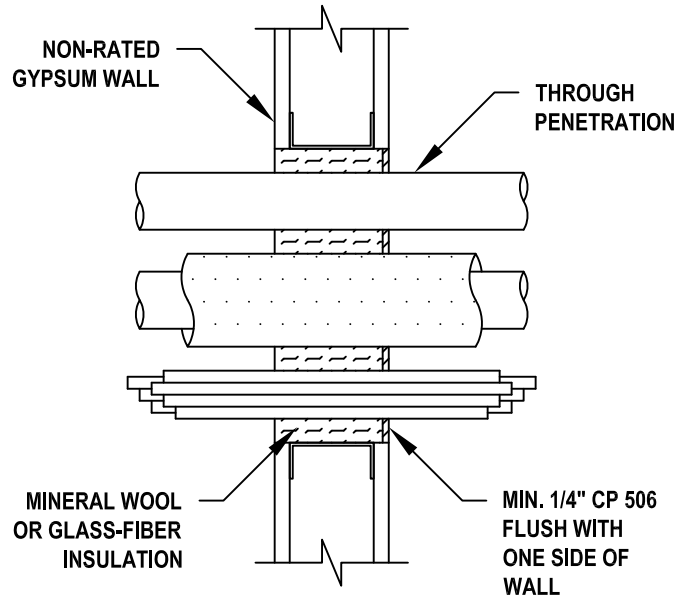
Saving Lives through Innovation and Education

THROUGH PENETRATION DETAIL FOR NON FIRE-RATED SMOKE PARTITIONS (EXAMPLES)

TWO-SIDED APPLICATIONS



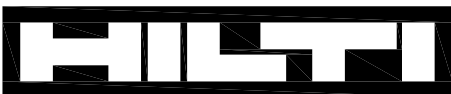
ONE-SIDED APPLICATIONS



TP-506-1b.120911

LIMITATIONS :

- HILTI CP 506 SMOKE AND ACOUSTIC SEALANT MAY BE INSTALLED WHERE IT IS NECESSARY TO RESTRICT SMOKE MIGRATION THROUGH NON FIRE-RATED ASSEMBLIES.
- NOT FOR FIRE-RATED ASSEMBLIES.
- NOT FOR USE WITH CPVC PIPING.
- REFER TO PRODUCT LITERATURE FOR COMPLETE DETAILS ON INSTALLATION, SUITABLE APPLICATIONS, AND LIMITATIONS.
- FOR APPLICATIONS THAT DO NOT MEET THE CONDITIONS ABOVE, CONTACT HILTI TECHNICAL SUPPORT.
- THESE DETAILS REPRESENT GENERAL INSTALLATION GUIDELINES TO SATISFY SMOKE PARTITION SEALING REQUIREMENTS OF THE INTERNATIONAL BUILDING CODE (2003, 2006, OR 2009). OBTAIN AUTHORITY HAVING JURISDICTION APPROVAL PRIOR TO INSTALLATION.



HILTI, Inc.
Tulsa, Oklahoma USA (800) 879-8000

Sheet	1 of 1
Scale	1/8" = 1"
Date	Dec. 09, 2011

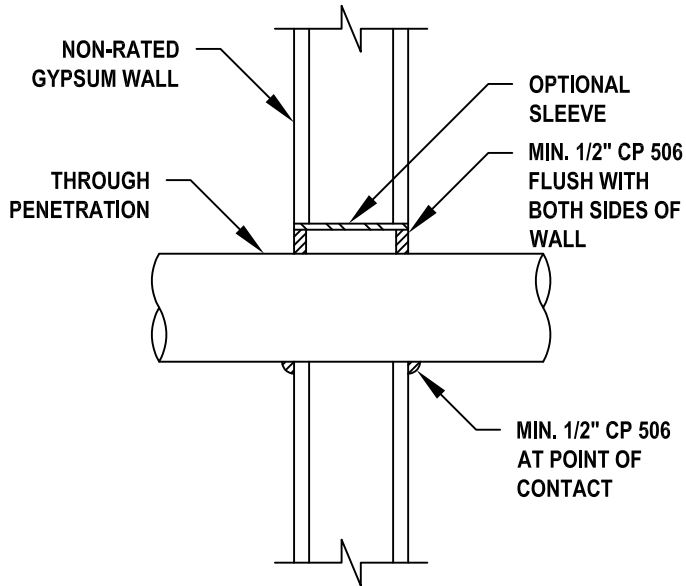
Drawing No.

TP-506-1b

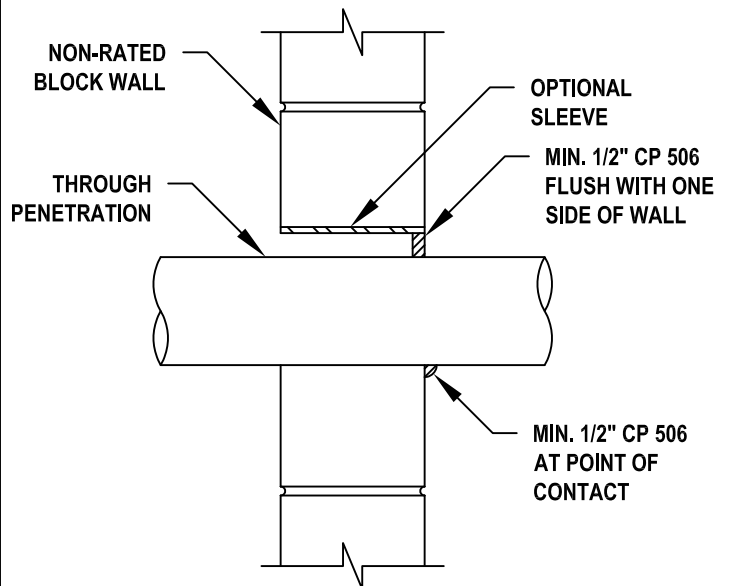
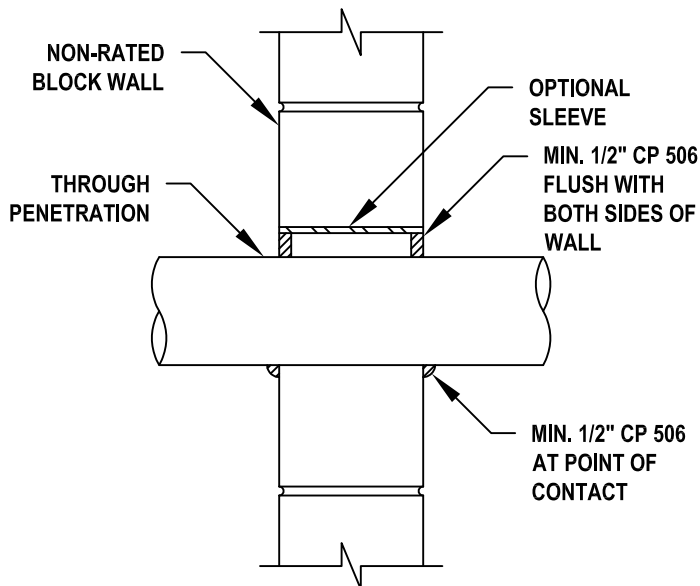
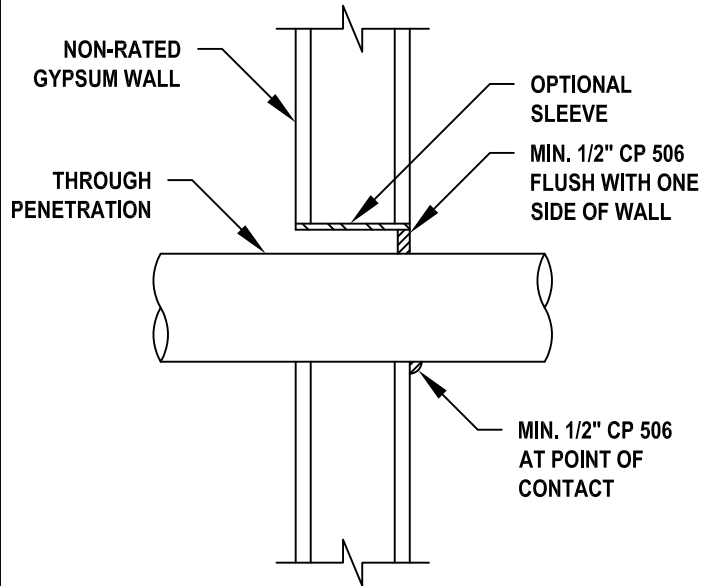
Saving Lives through Innovation and Education

THROUGH PENETRATION DETAIL FOR NON FIRE-RATED SMOKE PARTITIONS (EXAMPLES)

TWO-SIDED APPLICATIONS



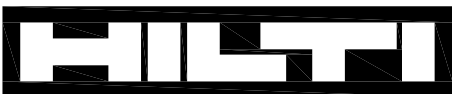
ONE-SIDED APPLICATIONS



TP-506-2b.120911

LIMITATIONS :

- HILTI CP 506 SMOKE AND ACOUSTIC SEALANT MAY BE INSTALLED WHERE IT IS NECESSARY TO RESTRICT SMOKE MIGRATION THROUGH NON FIRE-RATED ASSEMBLIES.
- NOT FOR FIRE-RATED ASSEMBLIES.
- NOT FOR USE WITH CPVC PIPING.
- REFER TO PRODUCT LITERATURE FOR COMPLETE DETAILS ON INSTALLATION, SUITABLE APPLICATIONS, AND LIMITATIONS.
- FOR APPLICATIONS THAT DO NOT MEET THE CONDITIONS ABOVE, CONTACT HILTI TECHNICAL SUPPORT.
- THESE DETAILS REPRESENT GENERAL INSTALLATION GUIDELINES TO SATISFY SMOKE PARTITION SEALING REQUIREMENTS OF THE INTERNATIONAL BUILDING CODE (2003, 2006, OR 2009). OBTAIN AUTHORITY HAVING JURISDICTION APPROVAL PRIOR TO INSTALLATION.



HILTI, Inc.
Tulsa, Oklahoma USA (800) 879-8000

Sheet	1 of 1
Scale	1/8" = 1"
Date	Dec. 09, 2011

Drawing No.

TP-506-2b

Saving Lives through Innovation and Education

Smoke and Acoustic Sealant (CP 506)

Applications

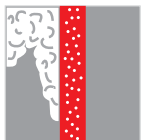
- Sealing construction joints and through-penetration openings in non fire-rated acoustical assemblies and smoke partitions (Not for use in fire-rated applications)

Advantages

- Easy to dispense, apply and tool
- Excellent airborne sound insulation properties
- Low shrinkage after curing
- Easy cleaning with water
- Paintable

Tested/evaluated in accordance with:

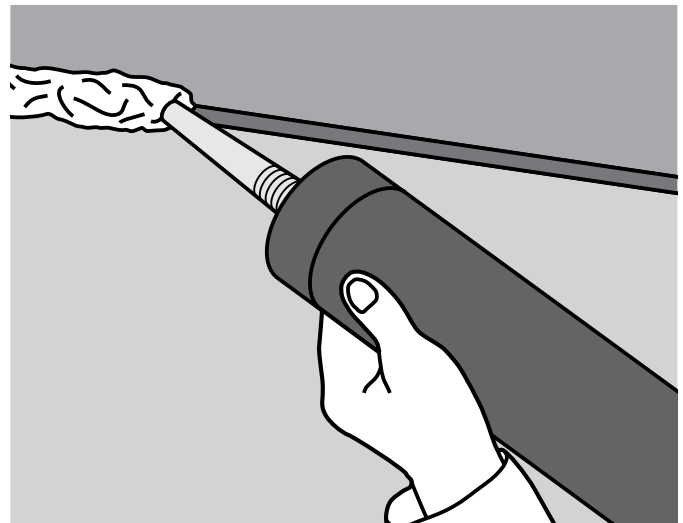
- ASTM E 90
- ASTM C 834
- ASTM E 84
- ASTM C 919



Restricts smoke migration



Excellent sound insulation characteristics with application based testing in accordance with ASTM E 90.



Technical Data	CP 506
Color	white
Chemical basis	acrylic
Storage and transport temperature range	40°F to 77°F (5°C to 25°C)
Curing time (73°F / 50% relative humidity)	approx. 3 mm / 3 days
Skin-forming time (73°F / 50% relative humidity)	approx. 15 min
Application temperature range	40°F to 104°F (5°C to 40°C)
Shelf life	24 months from date of manufacture
Sound transmission classification (ASTM E 90)	STC 63 (per tested construction type)
Movement capability (ISO 11600)	approx. 12.5%
Mold and mildew (ASTM G 21)	mold resistant
Surface burning characteristics (ASTM E 84-08)	Flame spread: 10 Smoke development: 10
Air leakage (Modified UL 2079 L-Rating)	L-Rating at Ambient = Less than 1 CFM / Lin Ft. L-Rating at 400°F = Less than 1 CFM / Lin Ft.

Installation instructions for CP 506

Notice

- Before handling, read Material Safety Data Sheet and product label for safe usage and health information.
- Instructions below are general guidelines — always refer to the product label, applicable product test reports and/or architect requirements

Opening

1. Clean the opening. Surfaces to which CP 506 will be applied should be cleaned of loose debris, dirt, oil, wax, grease, and other contaminants. The surface should be moisture and frost free.

Application of sealant

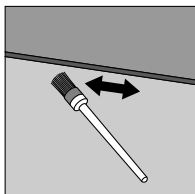
2. Apply sealant in opening at required depth
3. Smooth sealant with a trowel before the skin forms. Once cured, CP 506 can only be removed mechanically

Not for use

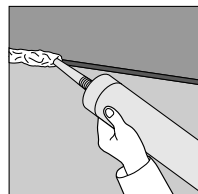
- In areas immersed in water

Storage

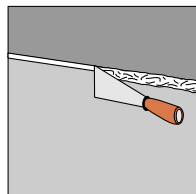
- Store only in the original packaging in a location protected from moisture at a temperature of 40°F to 77°F (5°C to 25°C)
- Observe expiration date on package



1. Clean opening



2. Apply CP 506



3. Tool CP 506

Hilti. Outperform. Outlast.

Hilti, Inc. (U.S.) 1-800-879-8000 • www.us.hilti.com • en español 1-800-879-5000 • Hilti Firestop Systems Guide



Hilti Firestop
Saving lives
through innovation
and education