

UL/cUL SYSTEM NO. HW-D-0258

TOP OF WALL JOINT : CONCRETE WALL OR BLOCK WALL ASSEMBLY

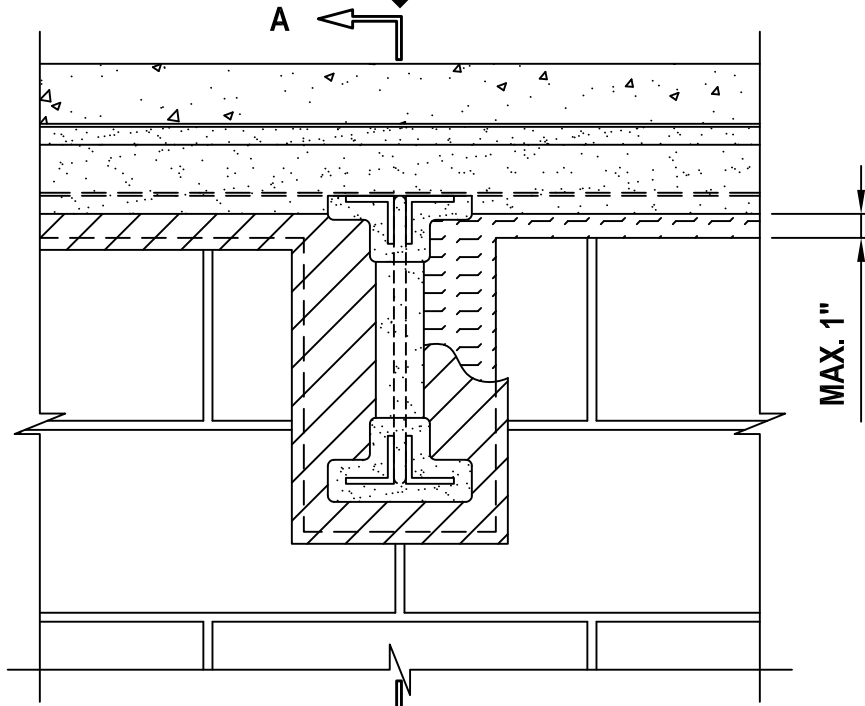
ASSEMBLY RATING = 2-HR.

CLASS II MOVEMENT CAPABILITIES - 25% COMPRESSION OR EXTENSION

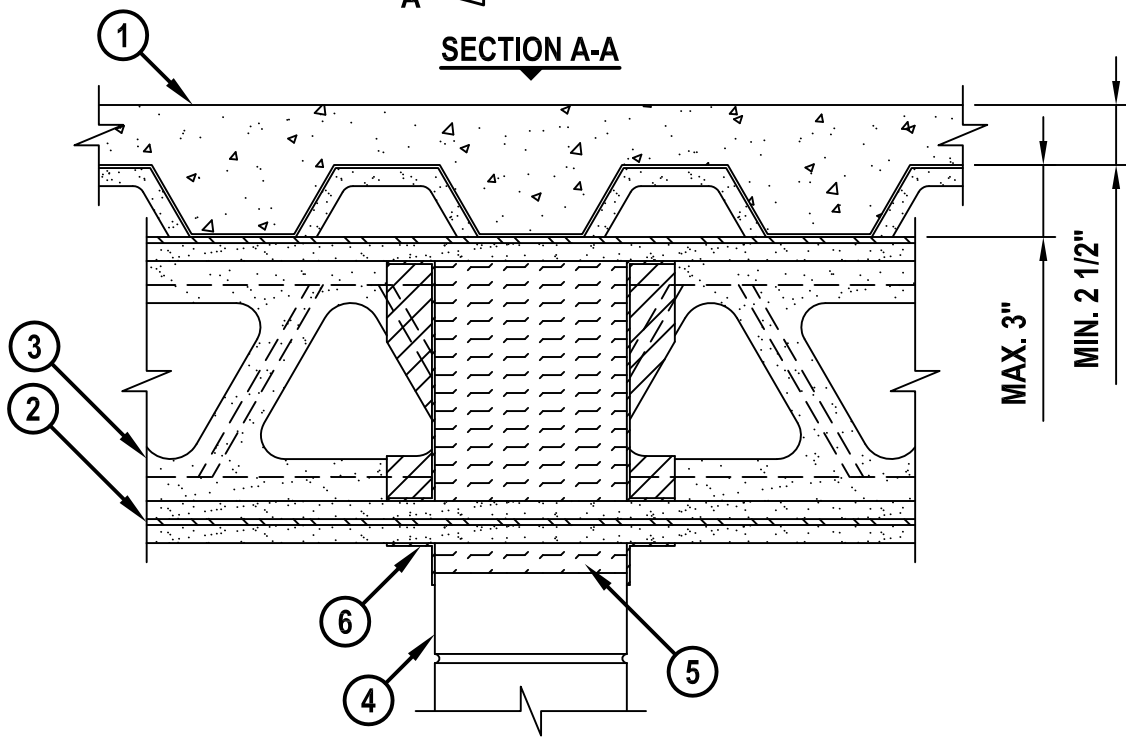
L-RATING AT AMBIENT = LESS THAN 1 CFM/LIN FT

L-RATING AT 400°F = LESS THAN 1 CFM/LIN FT

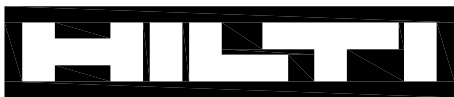
FRONT VIEW



SECTION A-A



HWD0258f.052510



Hilti Firestop Systems

HILTI, Inc.
Tulsa, Oklahoma USA (800) 879-8000

Sheet	1 of 2
Scale	1/8" = 1"
Date	May 25, 2010

Drawing No.

**HWD
0258f**

Saving Lives through Innovation and Education

UL/cUL SYSTEM NO. HW-D-0258

TOP OF WALL JOINT : CONCRETE WALL OR BLOCK WALL ASSEMBLY

ASSEMBLY RATING = 2-HR.

CLASS II MOVEMENT CAPABILITIES - 25% COMPRESSION OR EXTENSION

L-RATING AT AMBIENT = LESS THAN 1 CFM/LIN FT

L-RATING AT 400°F = LESS THAN 1 CFM/LIN FT

HWD0258f.052510

1. LIGHTWEIGHT OR NORMAL WEIGHT CONCRETE FLOOR (MINIMUM 2-1/2" THICK) OVER METAL DECK ASSEMBLY (2-HR. FIRE-RATING).
2. [OPTIONAL] STEEL BEAM OR OPEN WEB STEEL JOIST, ORIENTED PERPENDICULAR TO WALL ASSEMBLY (SEE NOTE NO. 2 BELOW).
3. UL CLASSIFIED MONOKOTE TYPE MK-6/HY (MANUFACTURED BY W.R. GRACE) OR TYPE 300 (MANUFACTURED BY ISOLATEK, INT.) FIREPROOFING SPRAYED TO THE THICKNESS SPECIFIED IN THE INDIVIDUAL D700 SERIES DESIGN (SEE NOTE NO. 3 BELOW).
4. CONCRETE WALL ASSEMBLY (2-HR. FIRE-RATING) :
 - A. LIGHTWEIGHT OR NORMAL WEIGHT CONCRETE WALL (MINIMUM 6" THICK).
 - B. ANY UL/cUL CLASSIFIED CONCRETE BLOCK WALL.
5. MINERAL WOOL (MINIMUM 4 PCF DENSITY) COMPRESSED 50% AND INSERTED INTO JOINT AND BAR JOIST/STEEL BEAM OPENING, FLUSH WITH WALL SURFACES.
6. MINIMUM 1/8" (WET) THICKNESS HILTI CFS-SP WB FIRESTOP JOINT SPRAY OR HILTI CP 672 SPEED SPRAY TO COMPLETELY COVER MINERAL WOOL AND TO OVERLAP MINIMUM 1/2" ONTO CONCRETE WALL ASSEMBLY, AND MINIMUM 2" ONTO FIREPROOFING, ON BOTH SIDES OF WALL ASSEMBLY.

NOTES :

1. MAXIMUM WIDTH OF JOINT = 1".
2. WHERE OPEN-WEB STEEL JOISTS PASS THROUGH THE WALL, 3/8" DIAMOND MESH EXPANDED STEEL LATH (NOMINAL WEIGHT = 1.7 TO 3.4 LB. PER YARD) SHALL BE SECURED TO ONE SIDE OF EACH JOIST WITH STEEL TIE WIRE.
3. FIREPROOFING MATERIAL TO BE EXCLUDED FROM METAL DECK DIRECTLY ABOVE THE CONCRETE WALL ASSEMBLY.
4. OPENING SHALL BE FORMED AROUND EACH STRUCTURAL STEEL MEMBER. MINIMUM CLEARANCE OF 1" , TO MAXIMUM CLEARANCE OF 4", SHALL BE MAINTAINED BETWEEN WALL ASSEMBLY AND FIREPROOFING ON THE TWO SIDES OF MEMBER. MAXIMUM CLEARANCE OF 2" SHALL BE MAINTAINED ON THE BOTTOM OF THE STEEL SUPPORT MEMBER.



HILTI, Inc.
Tulsa, Oklahoma USA (800) 879-8000

Sheet	2 of 2
Scale	-
Date	May 25, 2010

Drawing No.
**HWD
0258f**

Saving Lives through Innovation and Education