

Observation Work to Complete #15: Above conditions at building separation: building 1-building 6 connection

Origin		Status	Closed
Created By	Mike LaBonge (Brascia Builders, Inc.)	Date Created	Apr 11, 2025
Assignee		Distribution	
Notification Date		Priority	
Location	Building 1 Connection @ Building 6	Trade	
Due Date	Apr 18, 2025	Private	Yes
Contributing Condition		Contributing Behavior	
Hazard			
Spec Section			

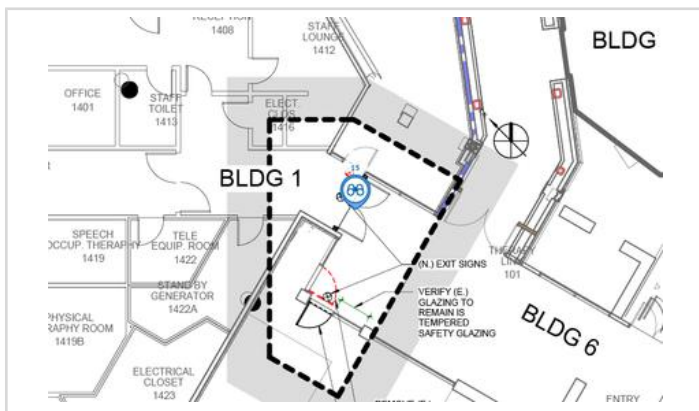
Description Located affected RACs piping

- Existing cold, waterlines and associated flex joints.
- Existing fire alarm booster panel
- Medgas lines with associated flex joints
- Fiber optic cable with yellow plastic jacketing routing through location
- Fire sprinkler and duct can be cut back to accommodate new work.

Appears to be a concrete deck that's been flooded with plaster previously

Ceiling system utilizes horizontal members spanning the corridor to attach T bar compression posts

Linked Drawings [AE401: ENLARGED PLAN Rev.0](#)



[AE401: ENLARGED PLAN Rev.0](#)

Attachments



[393DE85B-8EAA-4173-BABD-8D8EF66E0168.jpg](#)



[AA0EDA51-B29B-46F4-B898-8D7934502C8A.jpg](#)



[4384BA2D-386C-43E6-8750-AE1E30C6E0E6.jpg](#)



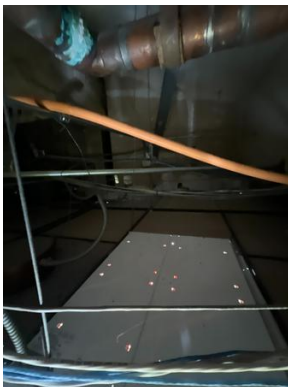
[2DA28BAE-C0BB-4C7A-AEDE-60946040DB21.jpg](#)



[4C713709-6E34-4DF4-99E9-B7C9D0F2499C.jpg](#)



[256682D1-A660-4732-84B0-DC2CB5C597D9.jpg](#)



[6D4DB987-23B1-4D77-91CE-FA5973482FA5.jpg](#)



[C483D57D-E152-48F0-9557-2C30EA46118A.jpg](#)



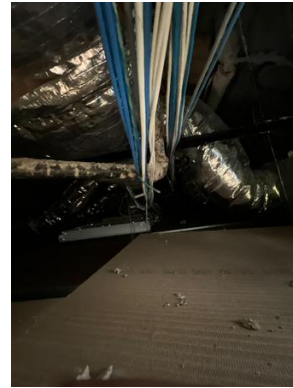
[8072391E-197D-4494-80D8-1D1BADBC5D78.jpg](#)



[551CD07F-6980-4522-A283-AC992B595703.jpg](#)



[3375B266-ED2E-40EB-ACE6-9741E6DC237B.jpg](#)



[7F5EE57A-F569-4E27-8F1A-FC8F52961B86.jpg](#)



[B754A1E8-C1BD-406E-912B-EFF0AF0C1132.jpg](#)



[A91BA939-9CBC-4F94-BDEC-2B295B9A4142.jpg](#)



[AA57C47A-66F6-495B-AA7C-218E68C1DC97.jpg](#)



[7C5C3C71-A345-4846-BBD1-EABA0F230B75.jpg](#)



[74B4BC47-AEB0-4330-AF69-43D6A65129F6.jpg](#)



[A594D9D8-254E-4B05-9900-0B20BC7486E2.jpg](#)



[83E92625-D842-4923-BC4B-8D11B7AEB7C.jpg](#)

Activity (1)

Mike LaBonge
04/15/2025 at 03:51 PM PDT

Status Changed: Closed