

# ENGINEERING JUDGMENT FIRESTOP DETAIL

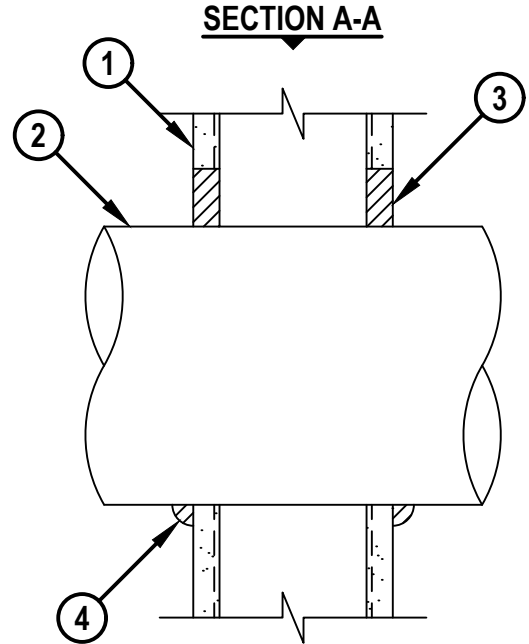
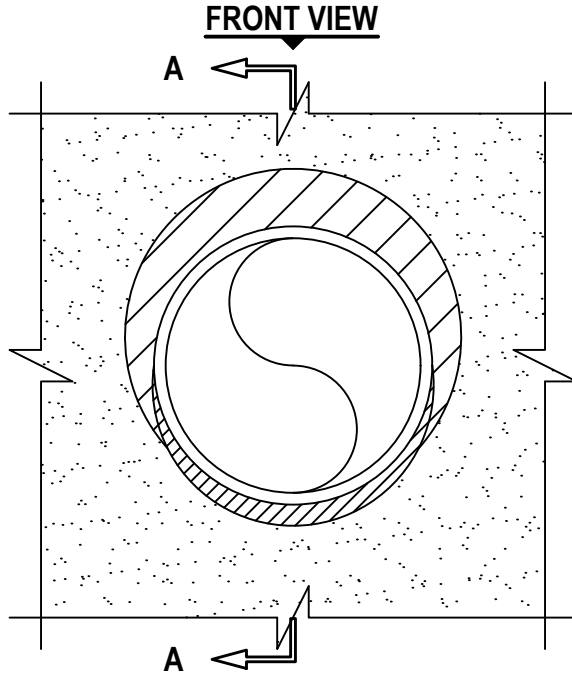
THIS DETAIL REPRESENTS A SYSTEM EXPECTED TO ACHIEVE THE STATED RATINGS IF TESTED. BECAUSE SITE CONDITIONS, INSTALLATION PRACTICES, AND COMPONENT CHOICES VARY, HILTI INC. CANNOT ASSUME RESPONSIBILITY FOR DESIGN OUTCOMES, CODE COMPLIANCE, OR THE PERFORMANCE OF COMPONENTS NOT MANUFACTURED BY HILTI. ACCORDINGLY, HILTI INC. DISCLAIMS ALL LIABILITY FOR ANY LOSS, DAMAGE, OR EXPENSE—INCLUDING INCIDENTAL OR CONSEQUENTIAL DAMAGES—RESULTING FROM THE USE OR RELIANCE ON THIS DETAIL.

PROJECT : SCRIPPS LA JOLLA  
 ADDRESS : LA JOLLA, CALIFORNIA 92037

ISSUED TO : COSCO FIRE

Ratings

F-RATING = 1-HR.



1. LATH AND PLASTER WALL ASSEMBLY (MIN. 3-1/2" WIDE STEEL STUDS OR NOM. 2" x 4" WOOD STUDS) (1-HR. FIRE-RATING) WITH MINIMUM 5/8" THICKNESS PLASTER.
2. PENETRATING ITEM TO BE ONE OF THE FOLLOWING :
  - A. MAXIMUM 2" DIAMETER STEEL PIPE (SCH 10 OR HEAVIER).
  - B. MAXIMUM 2" DIAMETER CAST IRON PIPE.
  - C. MAXIMUM 2" NOMINAL DIAMETER STEEL CONDUIT OR STEEL EMT.
3. MINIMUM 5/8" DEPTH HILTI FS-ONE MAX INTUMESCENT FIRESTOP SEALANT.
4. MINIMUM 1/2" BEAD HILTI FS-ONE MAX INTUMESCENT FIRESTOP SEALANT APPLIED AT POINT OF CONTACT.

**NOTES :**

1. MAXIMUM DIAMETER OF OPENING = 4"
2. ANNULAR SPACE = MINIMUM 0", MAXIMUM 2".
3. PENETRANT MAY BE INSTALLED WITH CONTINUOUS POINT OF CONTACT.

Referenced Tested Systems  
 (REFERENCE : UL/cUL SYSTEM NO. W-L-1054)

Project Application Details  
 CSO0011314  
 Applicable Test Method  
 UL 1479



HILTI, Inc.  
 Plano, Texas USA (800) 879-8000  
 Designed by Hilti FPE  
 Anthony Nguyen

Drafter  
**AN**

Sheet 1 of 1  
 Scale 7/32" = 1"  
 Date Nov. 14, 2025

Drawing No.  
**700960a**