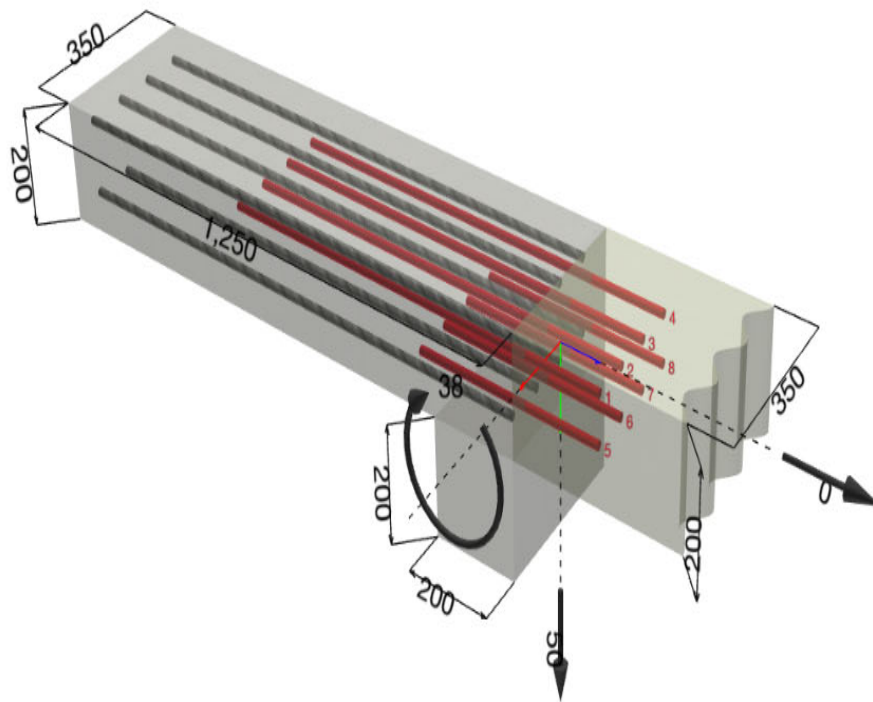




Change to 2D



HIT-RE 500 V4 + Rebar

SUSTAINABILITY New

Generate report →



DESIGN METHOD

EN1992-1-1, max drilling length,  $l_d$   
= 775.2 mm

REBAR LOADS

Layers	$F_{Ed}$ [kN]	$l_d$ [mm]
Top - Layer 1	349.673	775.2
Bottom - Layer 1	-20.848	270

TOP - LAYER 1

Steel

100%

Drilling length,  $l_d$  775.2 mm

Lap length,  $l_b$  745.2 mm

BOTTOM - LAYER 1

Steel

6%

Drilling length,  $l_d$  270 mm

Lap length,  $l_b$  240 mm

