



FIELD OBSERVATION REPORT

REPORT NUMBER F-71

SHEET 13 OF 16

PROJECT: 660 5th Ave (660 Fifth Ave)

DATE: 01/13/2022

VIDARIS PROJECT#: 20191236

DOB PERMIT#: 1034520

REF#: 172 **Curtain Wall WT-3: General Assembly of Steel Framing**

TRADE: Island

LOCATION: FL 10; East

TYPE: Deficiency

STATUS: Open

OBSERVATION

Socotec spot checked previously installed steel framing for WT-3 on the east elevation, 10th floor. Spot checks were performed from the ground level to confirm presence of slotted connection at the head, 5/8" thick sill plate (SS-02), Hilti bolt 5/8" diameter and 8-1/2" long (FS-94) installed at sill with welded flat washer, lock washer and nut, two bolts (FS-33) installed at horizontal structural steel to the vertical structural steel, and presence of vertical structural steel (ST-13). The work in progress was observed to be in general accordance with the approved as noted WT-3 shop drawings (submittal 084423-037-02), with the exception of the following:

1. WT-3 shop drawings (084423-037-02) and calculations (084423-040-00) are not signed and sealed by NYS PE. Island advised that they will be submitting updated shop drawing and calculations, signed and sealed by NYS PE. - OPEN
2. The shop drawing sheet EWS-552rev1, calls for fastener FS-94 at the sill. The fastener schedule calls for FS-94 to be 5/8" diameter and 8-1/2" long. However, in the field the bolt box noted the length of the bolt as 7" and when installed the embedment measured approximately 4". The calculations and shop drawings do not call out the required embedment. This was discussed with Island who advised that they will be submitted updated calculations that calls for 3-1/4" embedment. – OPEN
3. Two bolts on the south elevation were observed to be tilted. Island advised that this will be corrected in the field– OPEN

Refer to photos, sheet EWS-552rev1, and EMB-110.

ACTION RECOMMENDED

1. Island for formally submit WT-3 shop drawings and calculations, signed and sealed by NYS PE.
2. Island to formally submit the updated calculations, showing embedment, signed and sealed by NYS PE .
3. Island to remediate the observed screwed bolts per the approved shop drawings. Turner to advise when the work is complete for Socotec's reinspection.

PROJECT: 660 5th Ave (660 Fifth Ave)

DATE: 01/13/2022

VIDARIS PROJECT#: 20191236

DOB PERMIT#: 1034520

Photo 172.1 Overall view of the WT-3 wall on the east elevation, floor 10.



Photo 172.2 Overall view of the sill condition.



PROJECT: 660 5th Ave (660 Fifth Ave)

DATE: 01/13/2022

VIDARIS PROJECT#: 20191236

DOB PERMIT#: 1034520

Slotted Connection

Photo 172.3 Overall view of the head condition.

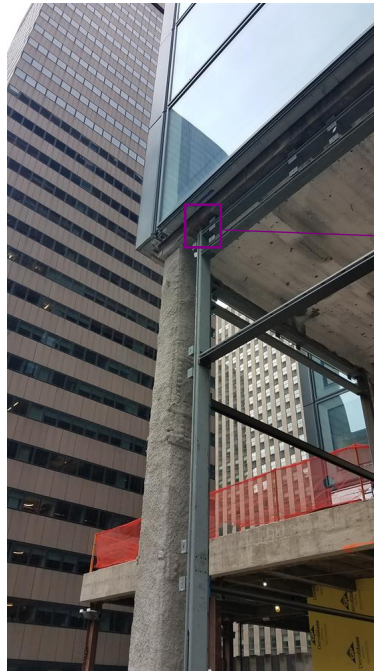
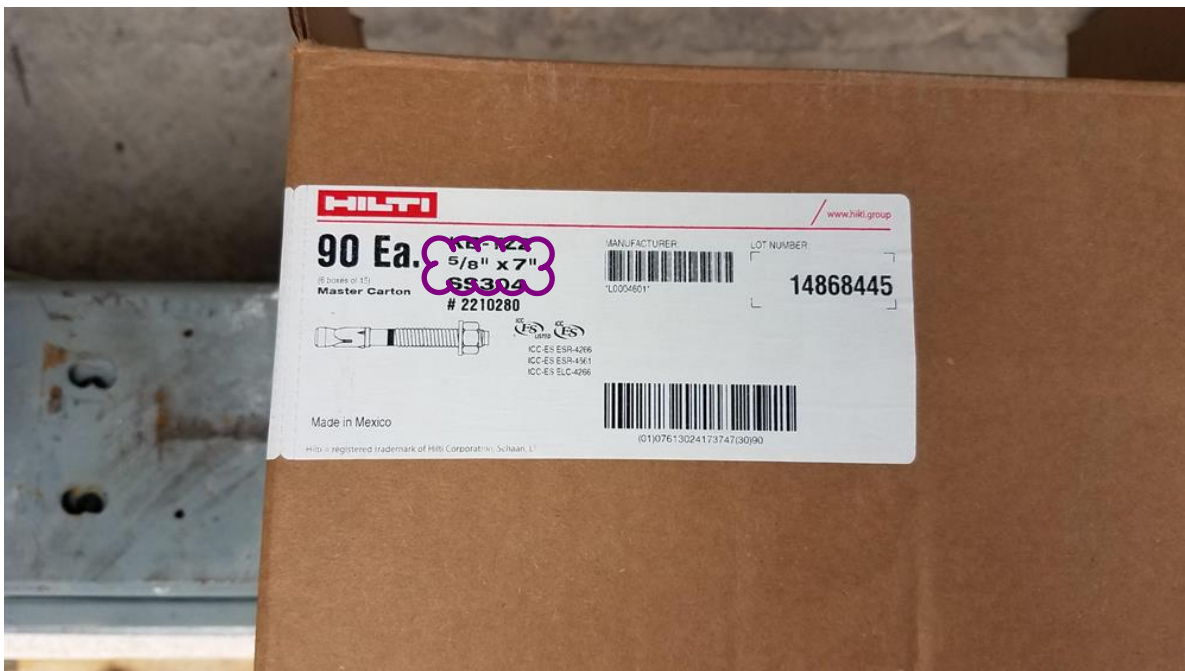


Photo 172.4 View of Hilti bolt at sill - 5/8" diameter x 7" length



PROJECT: 660 5th Ave (660 Fifth Ave)
VIDARIS PROJECT#: 20191236
DOB PERMIT#: 1034520

DATE: 01/13/2022

Photo 172.5 View of tilted bolts.

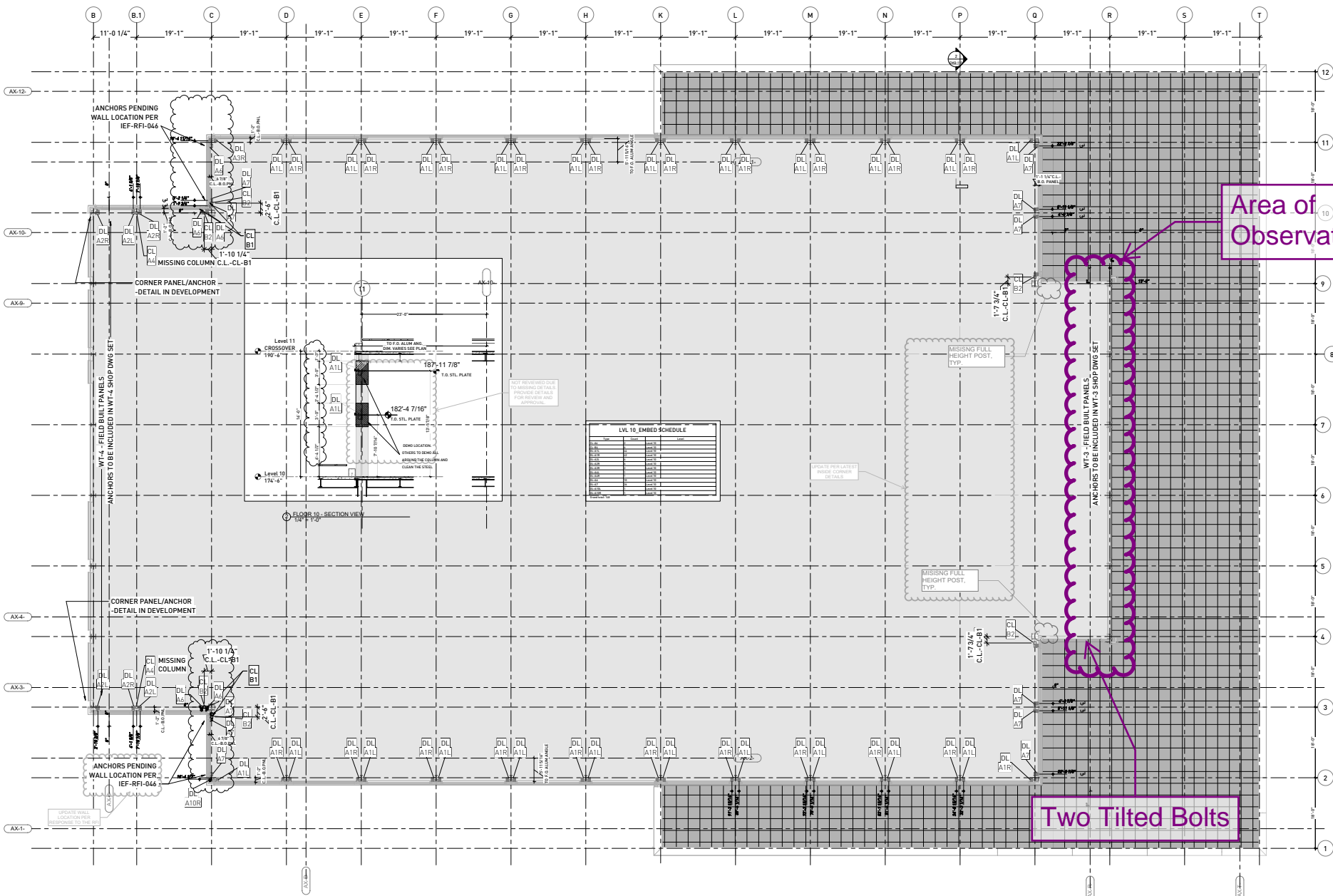
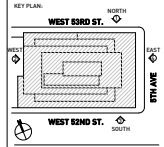


Photo 172.6 View of tilted bolts.



END OF REPORT

NO.	DESCRIPTION	DATE
1	Issue for Construction	02/20/2020
2	Issue for Construction	02/20/2020



Area of Observation

Two Tilted Bolts

NO.	DESCRIPTION	DATE
1	Issue for Construction	02/20/2020
2	Issue for Construction	02/20/2020

Level 10 Anchor Layout Plan
 1/8" = 1'-0"

