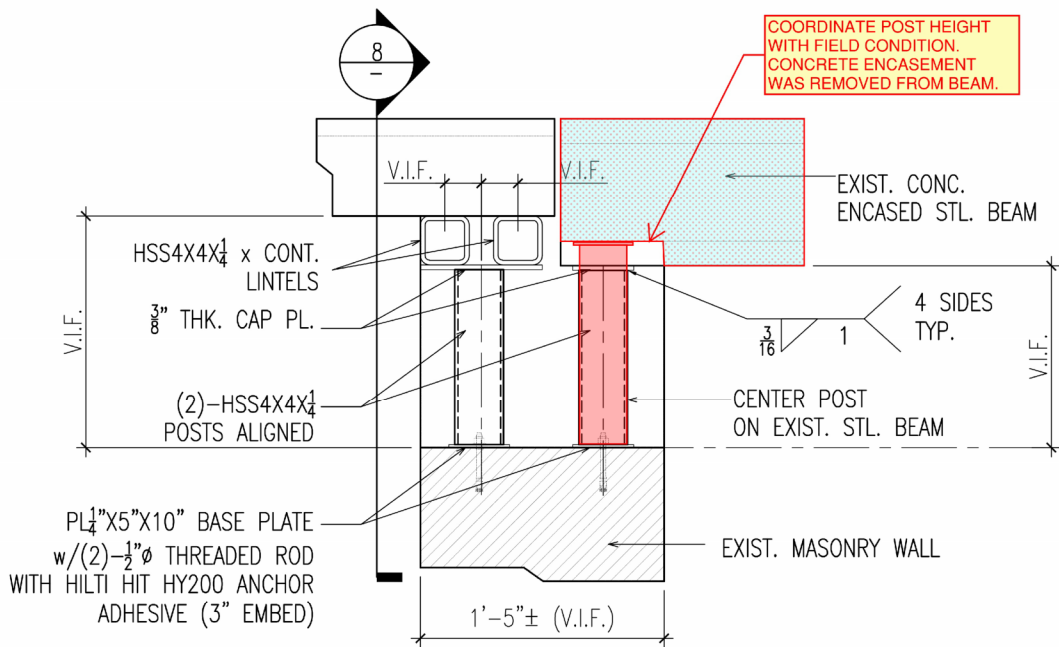
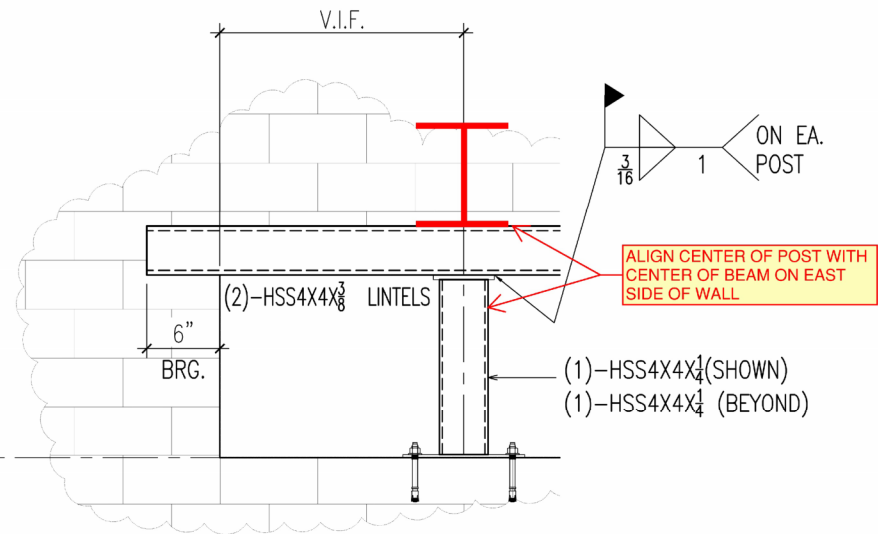




D



7 SECTION  
REF:4/S2.02



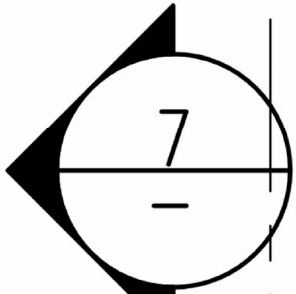
8 SECTION  
REF:4/S2.02

6'-6" V.I.F.  
6" BRG. 5'-6" V.I.F. 6" BRG.

REI  
NO  
JW

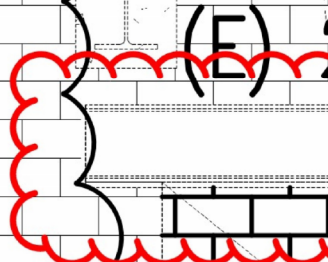
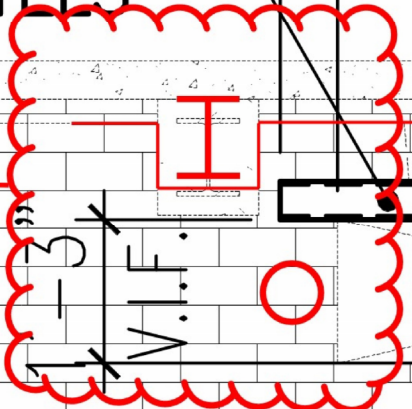
1A-4

(2)-HSS4X4X $\frac{3}{8}$   
LINTELS



(2)

RFI 21



(E)-CONC. ENCASED  
STEEL BEAM (V.I.F.)

1A-5

(2)-HSS4X4X $\frac{1}{4}$   
POSTS

