

ENGINEERING JUDGMENT FIRESTOP DETAIL

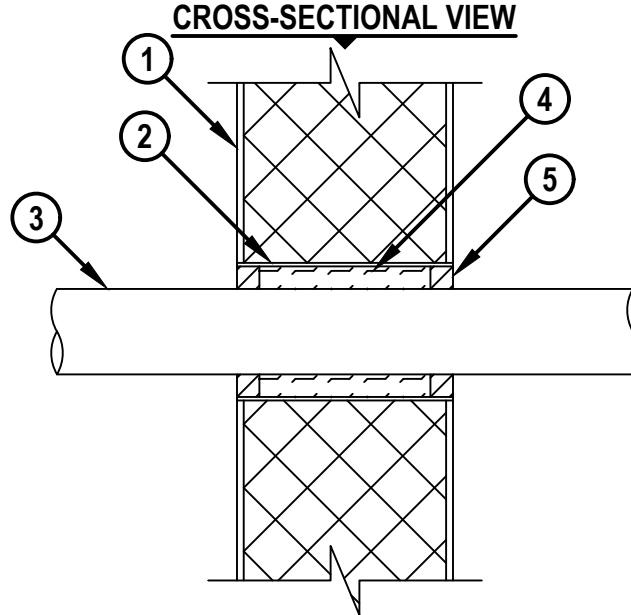
THIS ENGINEERING JUDGMENT REPRESENTS A FIRESTOP SYSTEM THAT WOULD BE EXPECTED TO PASS THE STATED RATINGS IF TESTED

PROJECT : MEDICOM
ADDRESS: 2570 Bonder Rd, london, Ontario N6M 1E1

ISSUED TO : SPH ENGINEERING INC

Ratings

F-RATING = 1-HR. OR 2-HR. (SEE NOTE NO. 3 BELOW)



1. INSULATED METAL PANEL WALL ASSEMBLY (KINGSPAN) (MIN. 26 GA.) (1-HR. OR 2-HR. FIRE-RATING) (2-HR. SHOWN) :
 - A. MINIMUM 4" WIDE FOR 1-HR FIRE-RATING.
 - B. MINIMUM 6" WIDE FOR 2-HR FIRE-RATING.
2. MAXIMUM 8" NOMINAL DIAMETER SHEET METAL SLEEVE (MIN. 28 GA.) WITH 1" OVERLAP ALONG LONGITUDINAL SEAM. SLEEVE TO BE RIGIDLY SUPPORTED.
3. METALLIC PENETRANT TO CONSIST OF ONE OF THE FOLLOWING :
 - A. MAXIMUM 6" NOMINAL DIAMETER STEEL PIPE (SCH 10 OR HEAVIER).
 - B. MAXIMUM 6" NOMINAL DIAMETER CAST IRON PIPE.
 - C. MAXIMUM 4" NOMINAL DIAMETER STEEL CONDUIT OR STEEL EMT.
4. MINERAL WOOL (MIN. 4 PCF DENSITY) TIGHTLY PACKED AND RECESSED TO ACCOMMODATE SEALANT.
5. MINIMUM 5/8" DEPTH HILTI FS-ONE MAX INTUMESCENT FIRESTOP SEALANT.

NOTES : 1. MAXIMUM DIAMETER OF OPENING = 8".
2. ANNULAR SPACE = MINIMUM 1/4", MAXIMUM 1".
3. FIRE-RATING OF ASSEMBLY IS DEPENDENT UPON THE PERFORMANCE OF WALL ASSEMBLY UNDER FIRE CONDITIONS.

Referenced Tested Systems
(REFERENCE : UL/cUL SYSTEM NO. W-L-1054, W-J-1067, & C-AJ-1380)

Project Application Details
CS0256813

Applicable Test Method
CAN/ULC S115-23



HILTI, Inc.
Plano, Texas USA (800) 879-8000

Designed by Hilti FPE

Chase Hellan

Drafter

Sheet 1 of 1

Scale -

Date Sep. 25, 2024

Drawing No.

649547a

Saving Lives through Innovation and Education