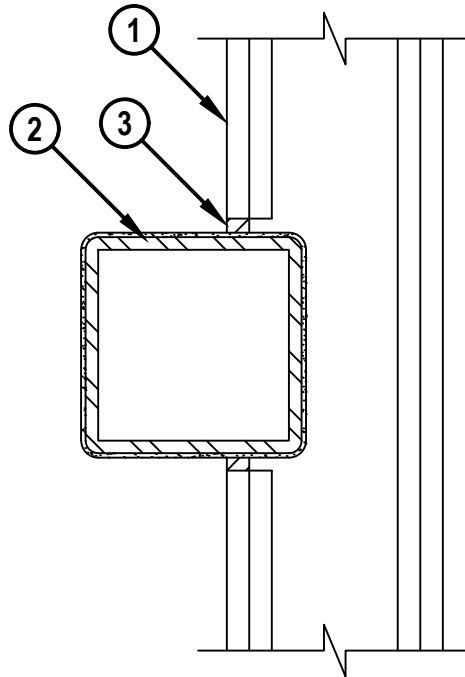


ENGINEERING JUDGMENT FIRESTOP DETAIL

PROJECT : CAMDEN ROCKPORT MIDDLE SCHOOL

CONTRACTOR : LEDGEWOOD CONSTRUCTION

F-RATING = 1-HR. OR 2-HR.

CROSS-SECTIONAL VIEW

1. GYPSUM WALL ASSEMBLY (UL/cUL CLASSIFIED) (1-HR. OR 2-HR. FIRE-RATING) (2-HR. SHOWN).
2. MAXIMUM 6" x 6" SOLID STEEL STRUCTURAL MEMBER WITH SPRAY APPLIED CEMENTITIOUS FIREPROOFING APPLIED TO A THICKNESS REQUIRED BY MANUFACTURER TO ACHIEVE A 2-HR. RATING.
3. MINIMUM 5/8" DEPTH HILTI CFS-S SIL GG FIRESTOP SILICONE SEALANT.

NOTES : 1. MAXIMUM SIZE OF OPENING = 7" x 7".
 2. ANNULAR SPACE = MINIMUM 1/8", MAXIMUM 7/8".

THIS ENGINEERING JUDGMENT REPRESENTS A FIRESTOP SYSTEM THAT WOULD BE EXPECTED TO PASS THE STATED RATINGS IF TESTED.
 (REFERENCE : UL/cUL SYSTEM NO. W-L-7130, W-L-1360 & W-L-1412)

**Hilti Firestop Systems**

HILTI, Inc.
 Plano, Texas USA (800) 879-8000

Designed by

Sheet 1 of 1

Scale 3/16" = 1"

Date May 26, 2020

Drawing No.

369267a***Saving Lives through Innovation and Education***