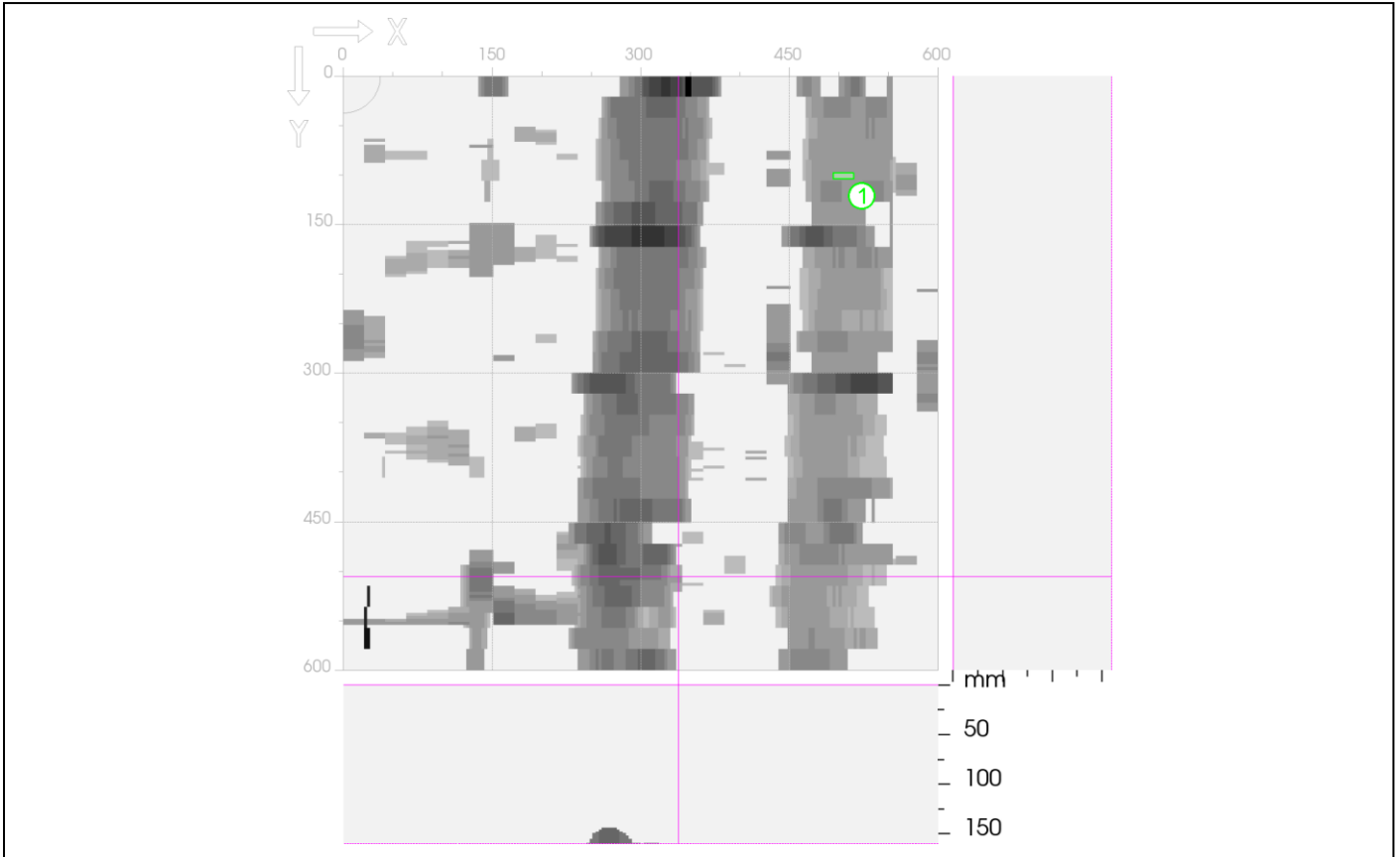


# Hilti PROFIS Detection Report

Scan File: FS000424.XFF  
 Serial number: 30711007  
 Date / Time: 2024 08-09 14:43:50  
 Comment: -

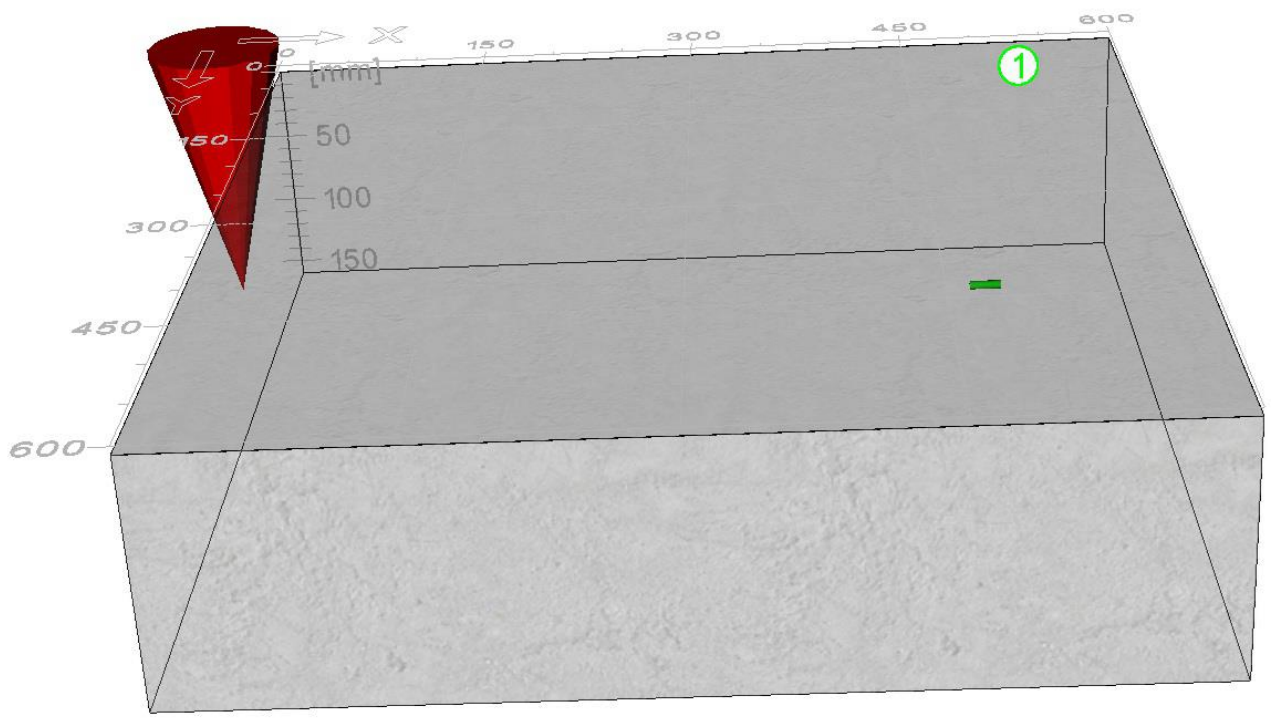


x: 338 mm                      y: 505 mm                      z: 0 mm                      Thickness: 160 mm  
 Overlay: - mm

Project name: - Osram                      Customer: - M.E.I Project  
 Location: - PEN#1                      Object: -  
 User: - Koolvox Industries  
 Comment: -

Ø Horizontal: -                      Type: Auto  
 Ø Vertical: -                      Type: Auto

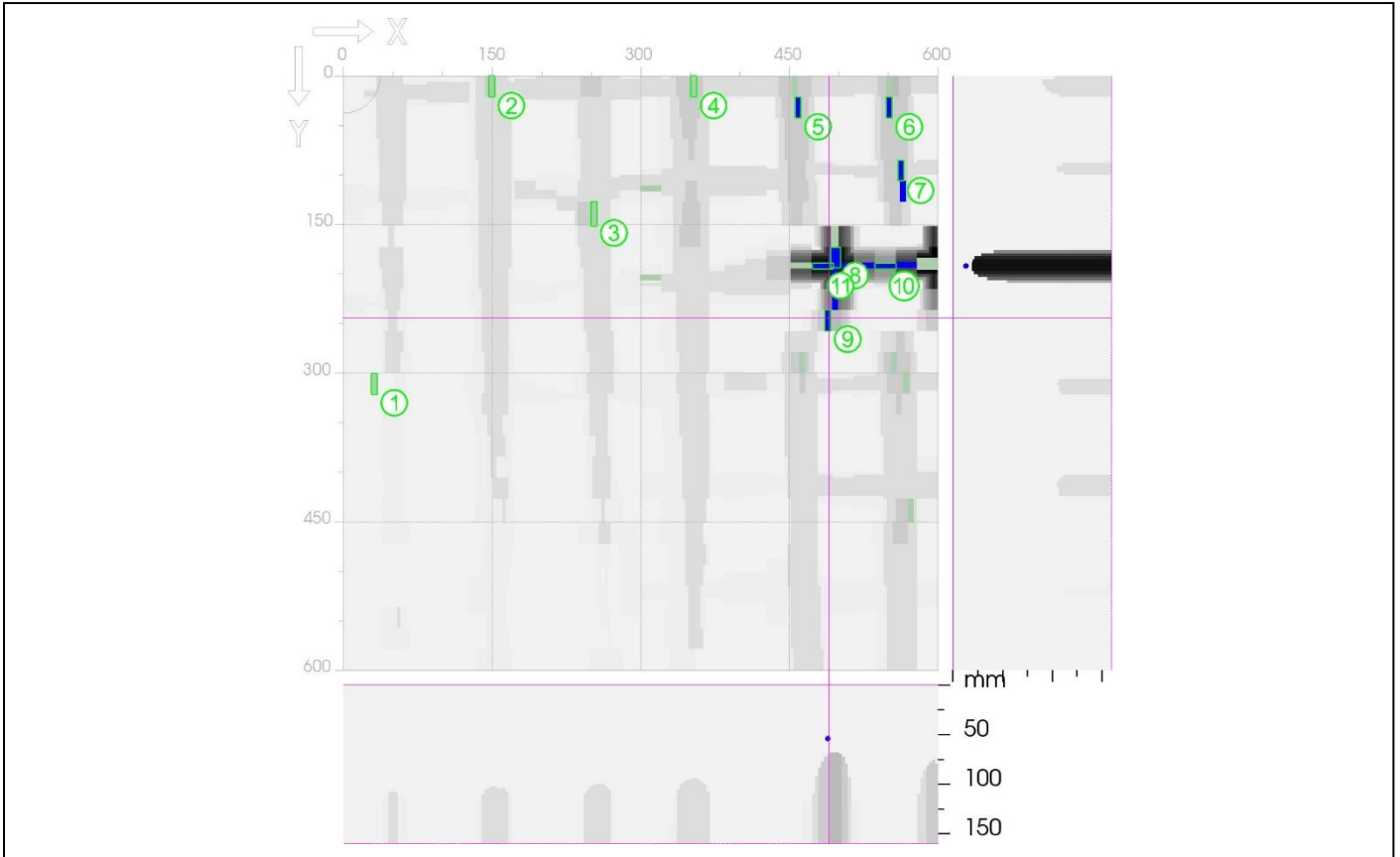
Recorded measurements:	x:	y:	Cover:	Ø:	Orientation:	Status:
1.	503 mm	101 mm	142 mm	6mm	Horizontal	Verified





# Hilti PROFIS Detection Report

Scan File: FS000425.XFF  
 Serial number: 30711007  
 Date / Time: 2024 08-09 14:55:27  
 Comment: -



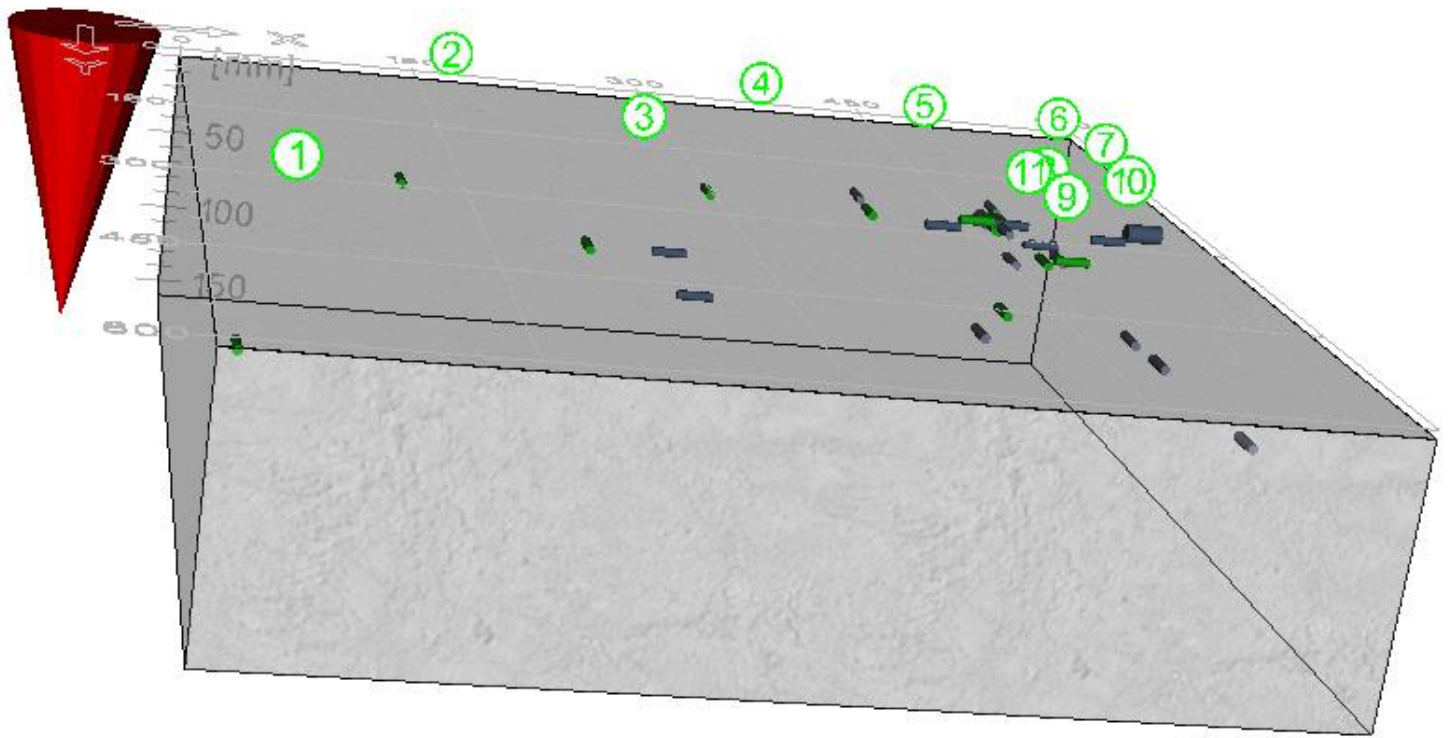
x: 490 mm                      y: 245 mm                      z: 0 mm                      Thickness: 160 mm  
 Overlay: - mm

Project name: - Osram                      Customer: - M.E.I. Project  
 Location: - PEN#1                      Object: -  
 User: - Koolvox Industries  
 Comment: -

∅ Horizontal: -                      Type: Auto  
 ∅ Vertical: -                      Type: Auto

**Recorded measurements:**

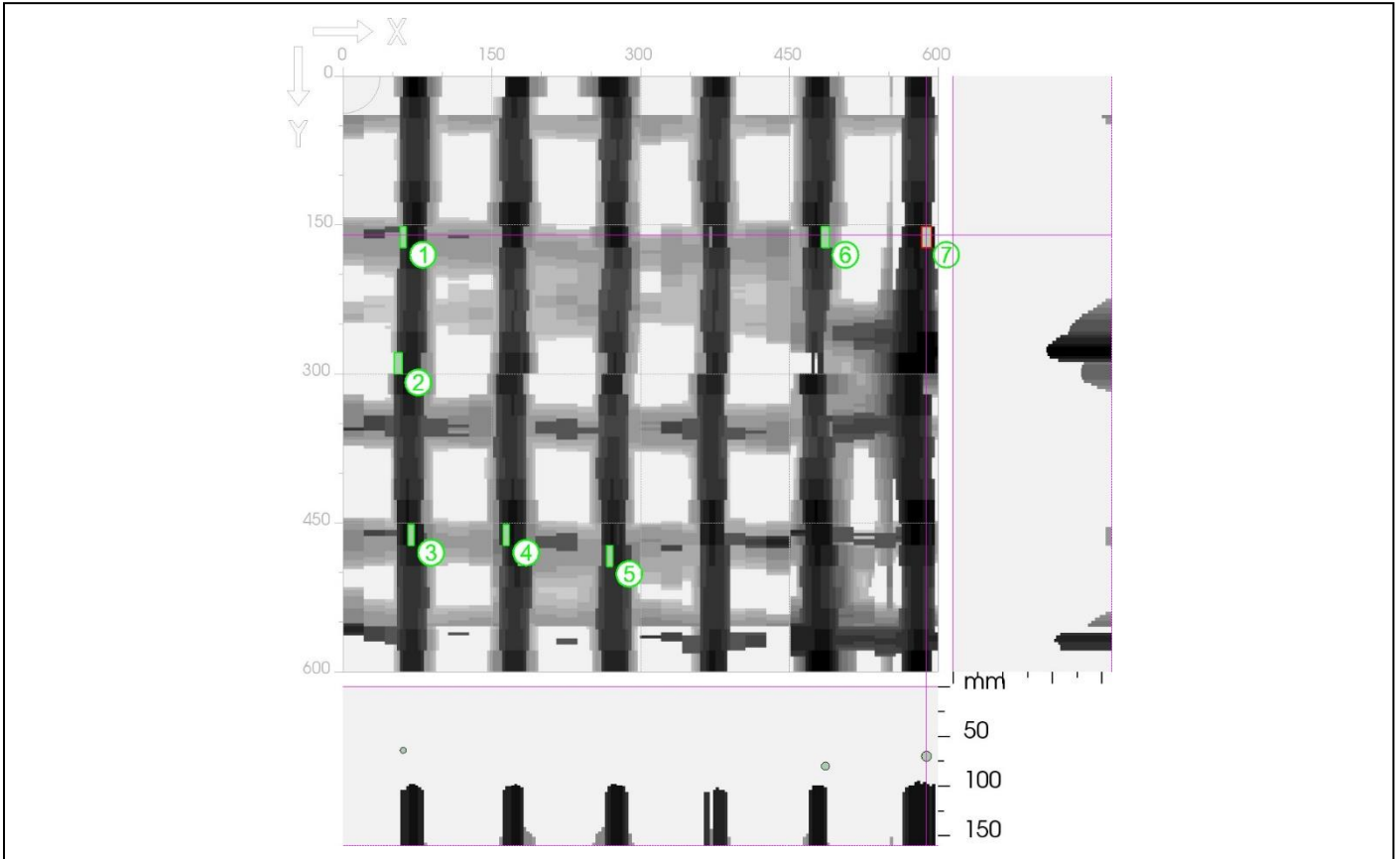
ID	Length 1 (mm)	Length 2 (mm)	Length 3 (mm)	Length 4 (mm)	Length 5 (mm)	Orientation	Status
1.	31	310	88	6	6	Vertical	Unverified
2.	149	10	63	6	6	Vertical	Unverified
3.	253	139	61	6	6	Vertical	Unverified
4.	353	10	52	6	6	Vertical	Unverified
5.	459	31	51	6	6	Vertical	Verified
6.	551	31	50	6	6	Vertical	Verified
7.	562	96	58	6	6	Vertical	Verified
8.	496	181	12	10	10	Vertical	Verified
9.	489	246	51	6	6	Vertical	Verified
10.	546	192	31	6	6	Horizontal	Verified
11.	481	192	10	6	6	Horizontal	Verified



**x:            y:            Cover:            Ø:            Orientation:            Status:**

# Hilti PROFIS Detection Report

Scan File: FS000422.XFF  
 Serial number: 30711007  
 Date / Time: 2024 08-09 13:54:33  
 Comment: -



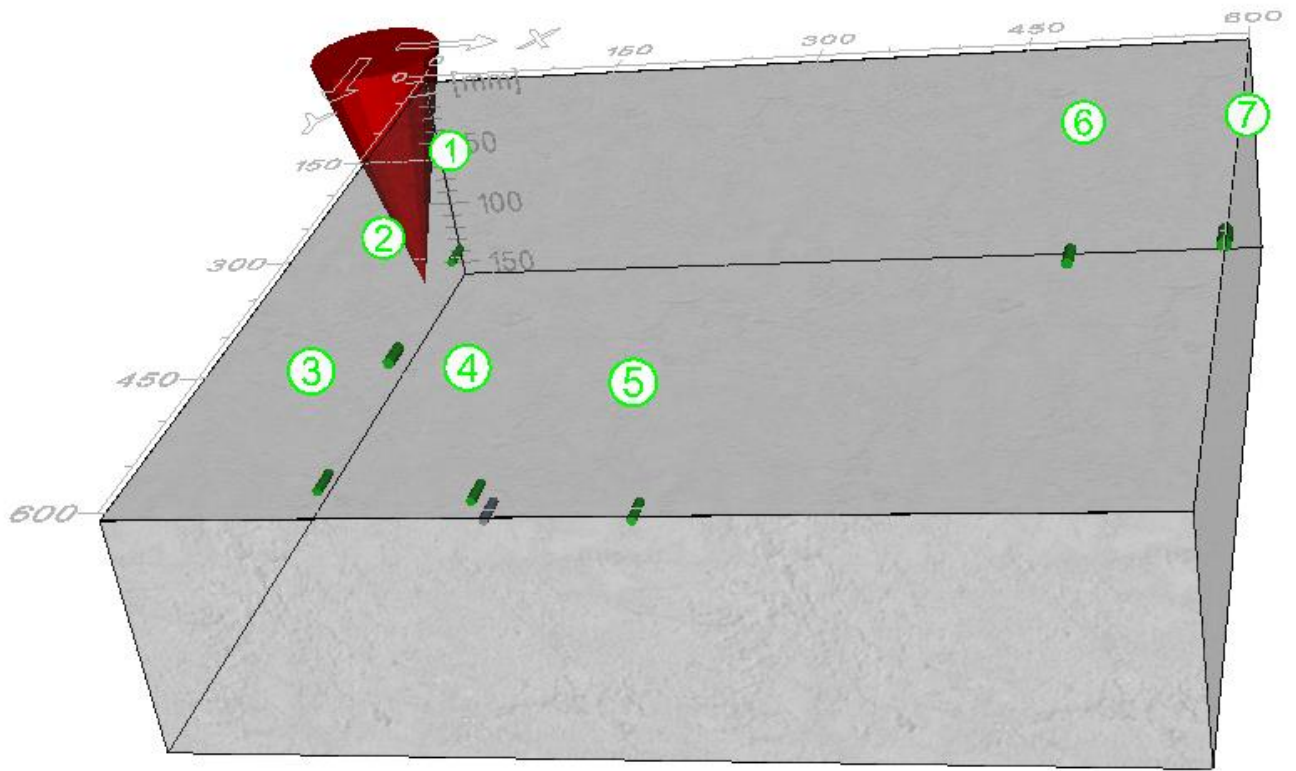
x: 588 mm                      y: 160 mm                      z: 0 mm                      Thickness: 160 mm  
 Overlay: 0 mm

Project name: - Osram                      Customer: - M.E.I Project  
 Location: - Pen#1                      Object: -  
 User: - Koolvox Industries

Comment: -

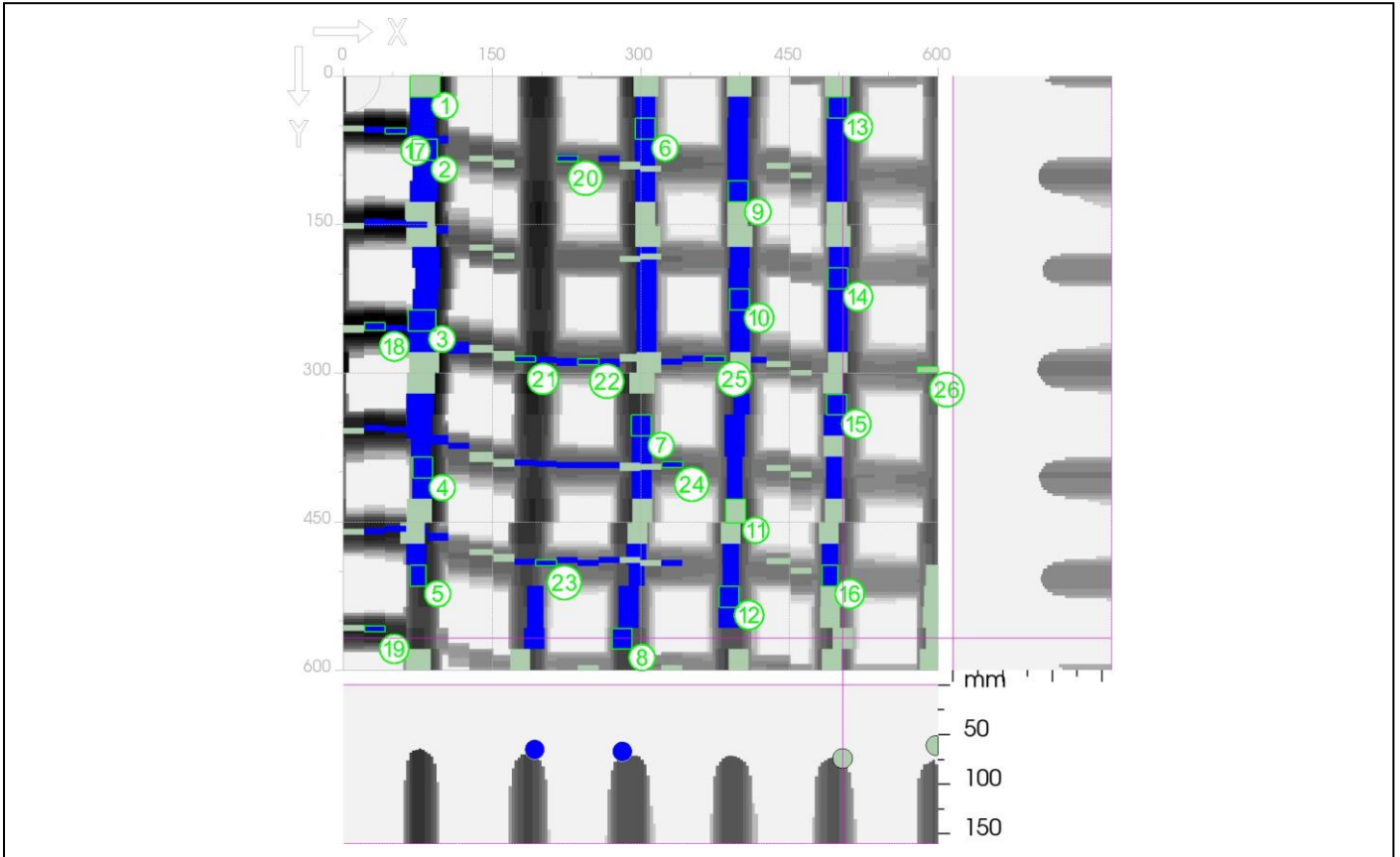
∅ Horizontal: -                      Type: Auto  
 ∅ Vertical: -                      Type: Auto

Recorded measurements:	x:	y:	Cover:	∅:	Orientation:	Status:
1.	61 mm	160 mm	61 mm	6mm	Vertical	Unverified
2.	56 mm	289 mm	67 mm	8mm	Vertical	Unverified
3.	69 mm	460 mm	60 mm	6mm	Vertical	Unverified
4.	165 mm	460 mm	68 mm	6mm	Vertical	Unverified
5.	269 mm	481 mm	69 mm	6mm	Vertical	Verified
6.	486 mm	160 mm	76 mm	8mm	Vertical	Unverified
7.	588 mm	160 mm	65 mm	10mm	Vertical	Unverified



# Hilti PROFIS Detection Report

Scan File: FS000426.XFF  
 Serial number: 30711007  
 Date / Time: 2024 08-09 14:59:49  
 Comment: -



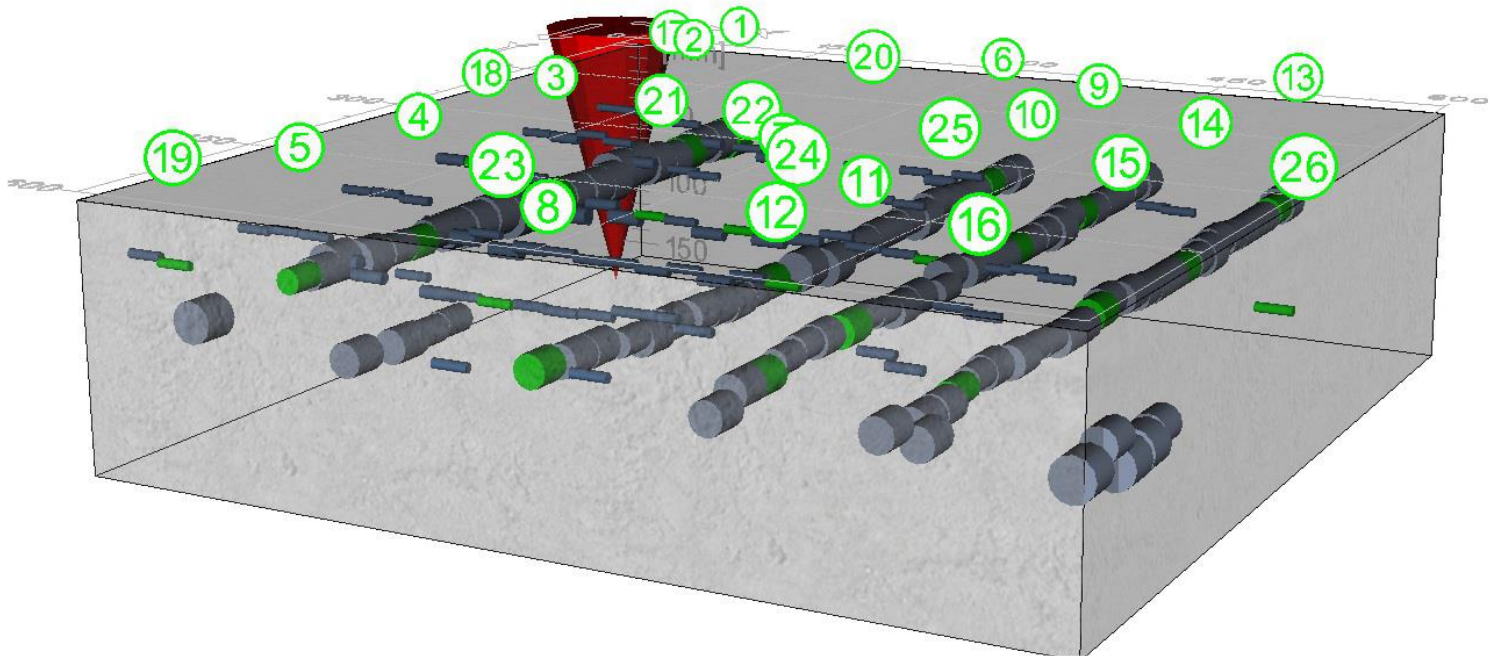
x: 504 mm                      y: 567 mm                      z: 0 mm                      Thickness: 160 mm  
 Overlay: - mm

Project name: - Osram                      Customer: - M.E.I project  
 Location: - PEN#1                      Object: -  
 User: - Koolvox Industries  
 Comment: -

∅ Horizontal: -                      Type: Auto  
 ∅ Vertical: -                      Type: Auto

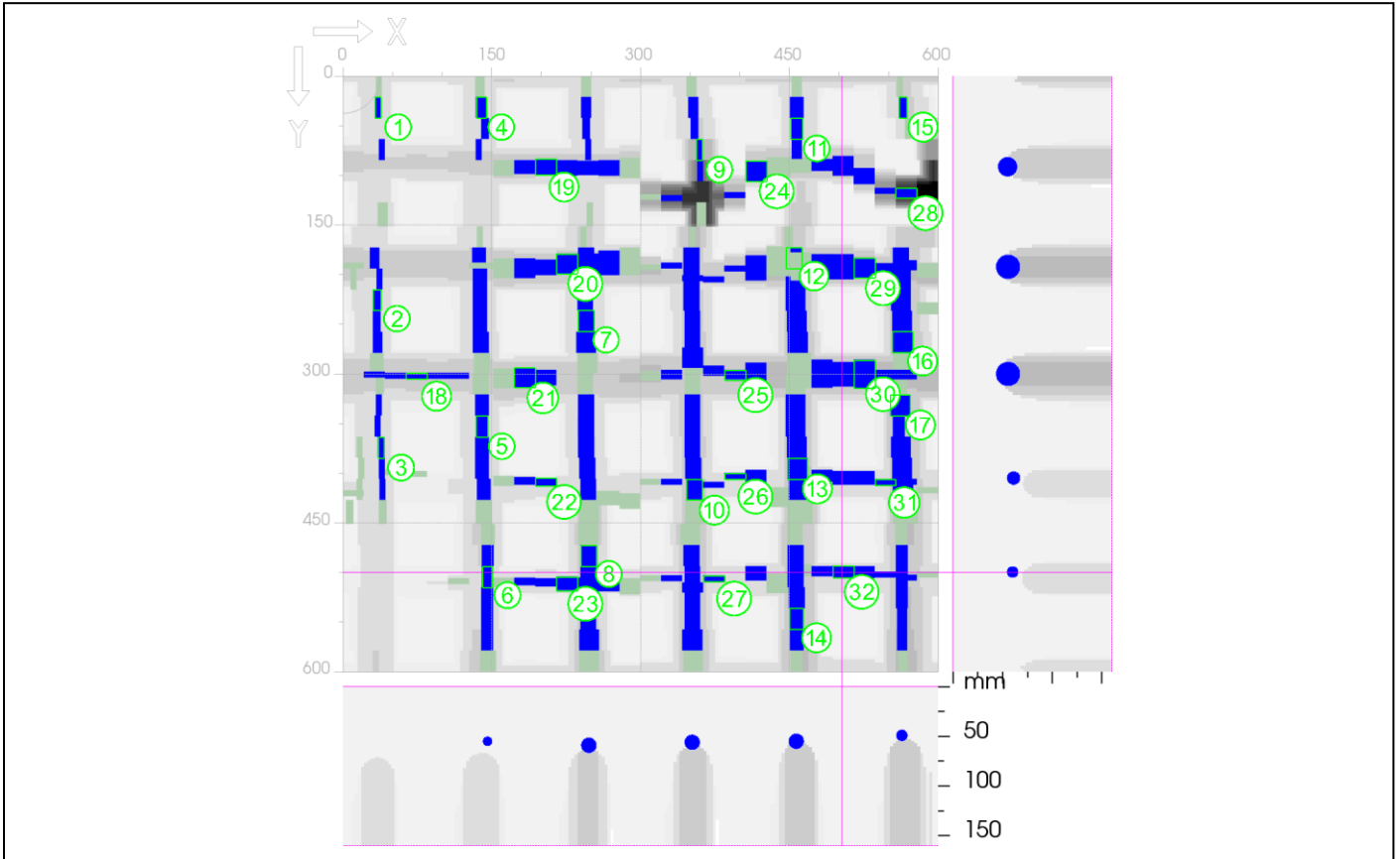
Recorded measurements:	x:	y:	Cover:	∅:	Orientation:	Status:
1.	82 mm	10 mm	45 mm	30mm	Vertical	Unverified
2.	82 mm	74 mm	47 mm	25mm	Vertical	Verified
3.	80 mm	246 mm	47 mm	28mm	Vertical	Verified
4.	80 mm	396 mm	48 mm	20mm	Vertical	Verified
5.	75 mm	503 mm	49 mm	16mm	Vertical	Verified
6.	305 mm	53 mm	55 mm	20mm	Vertical	Verified
7.	300 mm	353 mm	57 mm	20mm	Vertical	Verified
8.	281 mm	567 mm	57 mm	20mm	Vertical	Verified
9.	398 mm	117 mm	53 mm	20mm	Vertical	Verified
10.	399 mm	224 mm	54 mm	20mm	Vertical	Verified
11.	396 mm	439 mm	52 mm	20mm	Vertical	Unverified
12.	389 mm	524 mm	59 mm	20mm	Vertical	Verified
13.	499 mm	31 mm	57 mm	20mm	Vertical	Verified

Recorded measurements:	x:	y:	Cover:	Ø:	Orientation:	Status:
14.	499 mm	203 mm	59 mm	20mm	Vertical	Verified
15.	497 mm	331 mm	56 mm	20mm	Vertical	Verified
16.	491 mm	503 mm	60 mm	16mm	Vertical	Verified
17.	53 mm	56 mm	36 mm	6mm	Horizontal	Verified
18.	31 mm	253 mm	36 mm	8mm	Horizontal	Verified
19.	31 mm	558 mm	39 mm	6mm	Horizontal	Verified
20.	224 mm	83 mm	52 mm	6mm	Horizontal	Verified
21.	181 mm	286 mm	50 mm	6mm	Horizontal	Verified
22.	246 mm	288 mm	52 mm	6mm	Horizontal	Verified
23.	203 mm	492 mm	56 mm	6mm	Horizontal	Verified
24.	331 mm	392 mm	53 mm	6mm	Horizontal	Verified
25.	374 mm	286 mm	57 mm	6mm	Horizontal	Verified
26.	589 mm	297 mm	58 mm	6mm	Horizontal	Unverified



# Hilti PROFIS Detection Report

Scan File: FS000423.XFF  
 Serial number: 30711007  
 Date / Time: 2024 08-09 14:13:09  
 Comment: -



x: 503 mm                      y: 499 mm                      z: 0 mm                      Thickness: 160 mm  
 Overlay: - mm

Project name: - Osram                      Customer: - M.E.I Project  
 Location: - Pen#1                      Object: -  
 User: - Koolvox Industries  
 Comment: -

∅ Horizontal: -                      Type: Auto  
 ∅ Vertical: -                      Type: Auto

Recorded measurements:	x:	y:	Cover:	∅:	Orientation:	Status:
1.	36 mm	31 mm	53 mm	6mm	Vertical	Verified
2.	34 mm	224 mm	52 mm	8mm	Vertical	Verified
3.	39 mm	374 mm	53 mm	6mm	Vertical	Verified
4.	140 mm	31 mm	57 mm	10mm	Vertical	Verified
5.	140 mm	353 mm	53 mm	12mm	Vertical	Verified
6.	146 mm	503 mm	50 mm	10mm	Vertical	Verified
7.	245 mm	246 mm	53 mm	16mm	Vertical	Verified
8.	248 mm	481 mm	50 mm	16mm	Vertical	Verified
9.	359 mm	74 mm	32 mm	6mm	Vertical	Verified
10.	354 mm	417 mm	49 mm	16mm	Vertical	Verified
11.	458 mm	53 mm	53 mm	12mm	Vertical	Verified
12.	455 mm	181 mm	49 mm	16mm	Vertical	Verified
13.	458 mm	396 mm	50 mm	20mm	Vertical	Verified

Recorded measurements:	x:	y:	Cover:	Ø:	Orientation:	Status:
14.	457 mm	546 mm	45 mm	14mm	Vertical	Verified
15.	565 mm	31 mm	47 mm	8mm	Vertical	Verified
16.	564 mm	267 mm	47 mm	20mm	Vertical	Verified
17.	562 mm	331 mm	47 mm	20mm	Vertical	Verified
18.	74 mm	302 mm	40 mm	6mm	Horizontal	Verified
19.	203 mm	92 mm	50 mm	16mm	Horizontal	Verified
20.	224 mm	189 mm	47 mm	20mm	Horizontal	Verified
21.	181 mm	304 mm	48 mm	20mm	Horizontal	Verified
22.	203 mm	409 mm	59 mm	8mm	Horizontal	Verified
23.	224 mm	512 mm	57 mm	14mm	Horizontal	Verified
24.	417 mm	96 mm	46 mm	20mm	Horizontal	Verified
25.	396 mm	301 mm	40 mm	10mm	Horizontal	Verified
26.	396 mm	404 mm	54 mm	6mm	Horizontal	Verified
27.	374 mm	506 mm	50 mm	6mm	Horizontal	Verified
28.	567 mm	118 mm	7 mm	10mm	Horizontal	Verified
29.	524 mm	194 mm	41 mm	20mm	Horizontal	Verified
30.	524 mm	300 mm	44 mm	28mm	Horizontal	Verified
31.	546 mm	409 mm	49 mm	6mm	Horizontal	Verified
32.	503 mm	499 mm	54 mm	12mm	Horizontal	Verified

