

UL/cUL SYSTEM NO. HW-D-0750

TOP OF WALL JOINT : GYPSUM SHAFT WALL ASSEMBLY

ASSEMBLY RATING = 1-HR. OR 2-HR.

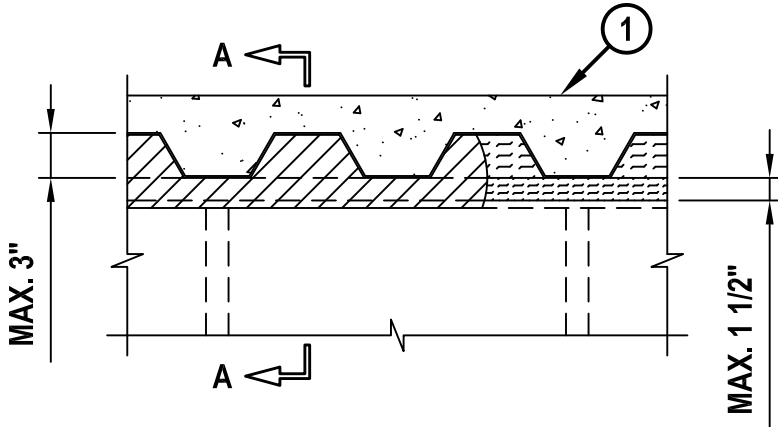
CLASS II MOVEMENT CAPABILITIES - 25% COMPRESSION OR EXTENSION

L-RATING AT AMBIENT = LESS THAN 1 CFM / LIN FT

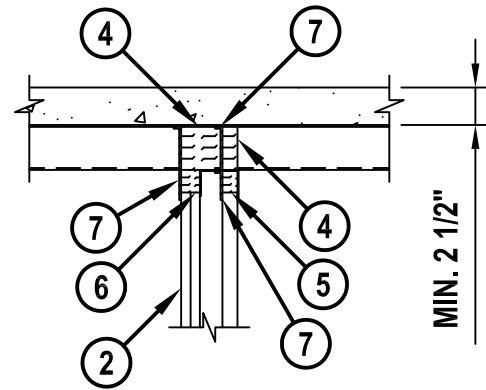
L-RATING AT 400°F = LESS THAN 1 CFM / LIN FT

HW0750a.042815

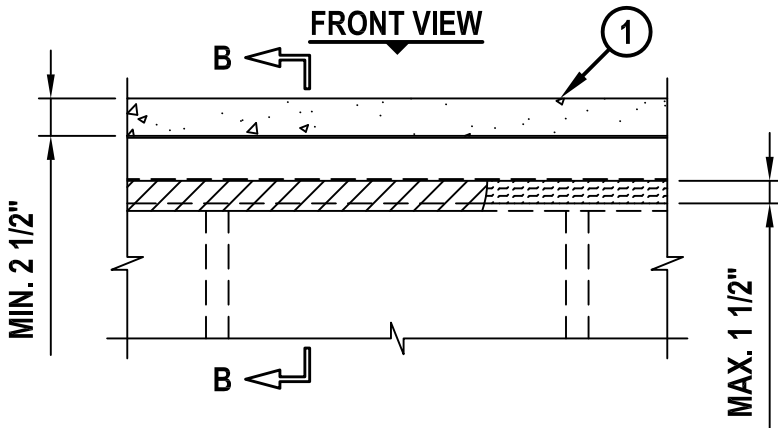
FRONT VIEW



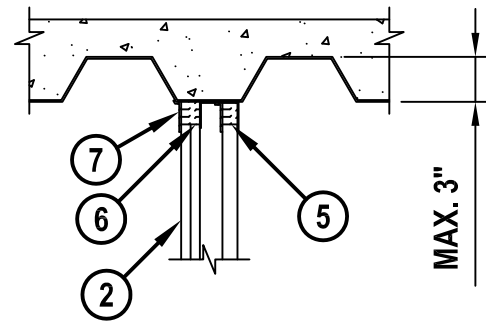
SECTION A-A



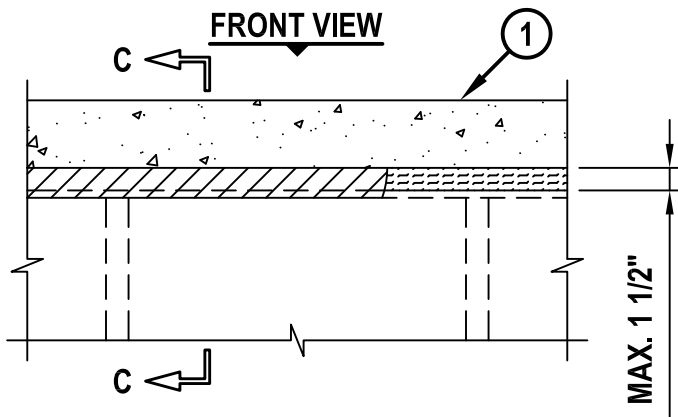
FRONT VIEW



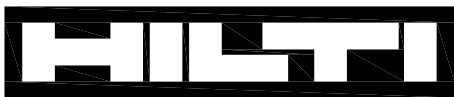
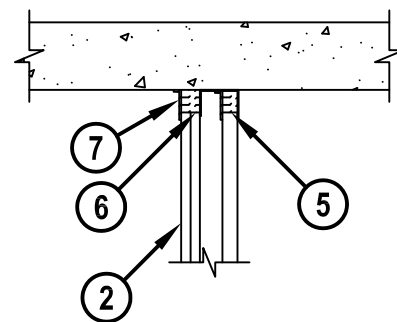
SECTION B-B



FRONT VIEW



SECTION C-C



Hilti Firestop Systems

HILTI, Inc.
Tulsa, Oklahoma USA (800) 879-8000

Sheet	1 of 3
Scale	5/64" = 1"
Date	Apr. 28, 2015

Drawing No.

**HWD
0750a**

Saving Lives through Innovation and Education

TOP OF WALL JOINT : GYPSUM SHAFT WALL ASSEMBLY

ASSEMBLY RATING = 1-HR. OR 2-HR.

CLASS II MOVEMENT CAPABILITIES - 25% COMPRESSION OR EXTENSION

L-RATING AT AMBIENT = LESS THAN 1 CFM / LIN FT

L-RATING AT 400°F = LESS THAN 1 CFM / LIN FT

HWD0750a.042815

1. FLOOR OR ROOF ASSEMBLY (1-HR. OR 2-HR. FIRE-RATING) :
 - A. LIGHTWEIGHT OR NORMAL WEIGHT CONCRETE FLOOR (MINIMUM 2-1/2" THICK) OVER METAL DECKING (UL/cUL CLASSIFIED D700 OR D900 SERIES).
 - B. INSULATING CONCRETE (MINIMUM 2-1/4" THICK) OVER METAL DECKING (UL/cUL CLASSIFIED P900 SERIES).
 - C. FLUTED STEEL ROOF DECK WITH SPRAY-APPLIED FIREPROOFING (UL/cUL CLASSIFIED P700 SERIES).
 - D. LIGHTWEIGHT OR NORMAL WEIGHT CONCRETE FLOOR (MINIMUM 4-1/2" THICK).
 - E. ANY UL/cUL CLASSIFIED PRECAST (HOLLOW-CORE) CONCRETE FLOOR (MINIMUM 6" THICK).
2. GYPSUM SHAFT WALL ASSEMBLY (UL/cUL CLASSIFIED U400, V400, OR W400 SERIES) (1-HR. OR 2-HR. FIRE-RATING) (2-HR. SHOWN) TO INCLUDE THE FOLLOWING CONSTRUCTION FEATURES :
 - A. "J" SHAPED CEILING RUNNER, MINIMUM 2-1/2" WIDE WITH LEGS OF MINIMUM 2-1/2" (MINIMUM 25 GA.) FASTENED TO UNDERSIDE OF DECK OR FLOOR WITH STEEL FASTENERS (OR WELDS) SPACED MAXIMUM 24" OC. CEILING RUNNER MAY BE INSTALLED PARALLEL OR PERPENDICULAR TO DECK FLUTES.
 - B. "C-H" SHAPED STUDS (MINIMUM 2-1/2" WIDE, MINIMUM 25 GA.) CUT 1" TO 1-1/4" LESS IN LENGTH THAN ASSEMBLY HEIGHT, NESTING IN CEILING RUNNER.
 - C. NOMINAL 1" THICK GYPSUM LINER PANEL CUT 1" TO 1-1/2" LESS IN LENGTH THAN FLOOR TO CEILING HEIGHT. TYPE AND SHEET ORIENTATION AS SPECIFIED IN THE INDIVIDUAL UL DESIGN.
 - D. NOMINAL 5/8" THICK GYPSUM WALLBOARD "TYPE C" GYPSUM WALLBOARD APPLIED VERTICALLY OR HORIZONTALLY IN ONE OR TWO LAYERS FOR 1-HR. OR 2-HR. RATED WALLS RESPECTIVELY. CUT WALLBOARD MAXIMUM 1-1/2" LESS IN LENGTH THAN ASSEMBLY HEIGHT WITH SCREW ATTACHMENT 1" BELOW THE BOTTOM OF THE CEILING RUNNER.
3. [OPTIONAL - NOT SHOWN] WHEN SPRAY-APPLIED FIREPROOFING IS USED, CEILING RUNNER MAY BE SECURED TO DECK WITH Z-SHAPED CLIPS (MIN. 20 GA.) WITH 1-1/2" LONG UPPER AND LOWER LEGS. SUPPORT CLIPS SPACED MAXIMUM 16" OC AND SECURED TO BOTTOM OF DECK WITH STEEL FASTENERS OR WELDS. CLIPS TO EXTEND 1/4" TO 3/4" FROM THE SURFACE OF THE WALL.
4. NOMINAL 1" THICKNESS HILTI CP 777 SPEED PLUG FRICTION FIT TO FILL FLUTES ABOVE CEILING RUNNER. ADDITIONAL HILTI CP 777 SPEED PLUG FRICTION FIT TO FILL THE REMAINDER OF THE FLUTES FLUSH WITH FINISHED SIDE OF WALL.
5. NOMINAL 1-1/4" THICKNESS HILTI CP 767 SPEED STRIP OR MINIMUM 1" THICKNESS MINERAL WOOL SAFING (MIN. 4 PCF DENSITY) COMPRESSED 50% TO FILL SPACE WITHIN CEILING RUNNER ABOVE GYPSUM LINER.
6. MINIMUM 5/8" OR 1-1/4" THICKNESS HILTI CP 767 SPEED STRIP OR MINERAL WOOL SAFING (MIN. 4 PCF DENSITY) COMPRESSED 50% FOR 1-HR. OR 2-HR. RATED WALLS RESPECTIVELY. MINERAL WOOL INSTALLED FLUSH WITH FINISHED SIDE OF WALL.



Hilti Firestop Systems

HILTI, Inc.
Tulsa, Oklahoma USA (800) 879-8000

Sheet	2 of 3
Scale	-
Date	Apr. 28, 2015

Drawing No.

**HWD
0750a**

UL/cUL SYSTEM NO. HW-D-0750

TOP OF WALL JOINT : GYPSUM SHAFT WALL ASSEMBLY

ASSEMBLY RATING = 1-HR. OR 2-HR.

CLASS II MOVEMENT CAPABILITIES - 25% COMPRESSION OR EXTENSION

L-RATING AT AMBIENT = LESS THAN 1 CFM / LIN FT

L-RATING AT 400°F = LESS THAN 1 CFM / LIN FT

HW0750a.042815

7. MINIMUM 1/8" (WET) THICKNESS HILTI CFS-SP WB FIRESTOP JOINT SPRAY TO COMPLETELY COVER MINERAL WOOL AND TO OVERLAP A MINIMUM 1/2" ONTO GYPSUM, CEILING RUNNER, AND METAL DECKING OR CONCRETE FLOOR.

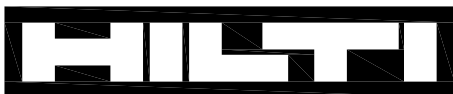
NOTES : 1. MAXIMUM WIDTH OF JOINT = 1-1/2".

2. STEEL FLOOR UNITS MAY BE SPRAYED WITH UL CLASSIFIED MONOKOTE TYPE MK-6/HY (MANUFACTURED BY W.R. GRACE) OR CAFCO TYPE 300 (MANUFACTURED BY ISOLATEK, INT.).

3. WHEN THE STEEL DECK IS COATED WITH FIREPROOFING, HILTI FIRESTOP JOINT SPRAY SHALL OVERLAP THE FIREPROOFING MINIMUM 2" ON FINISHED SIDE OF WALL AND ABOVE CEILING RUNNER.

4. AS AN ALTERNATE TO CEILING RUNNER IN ITEM 2A, SLOTTED CEILING RUNNERS MAY BE USED. CONSULT THE UL FIRE RESISTANCE DIRECTORY FOR APPROVED MANUFACTURERS.

5. AS AN ALTERNATE TO HILTI CP 777 SPEED PLUGS, MINERAL WOOL SAFING (MIN. 4 PCF DENSITY) COMPRESSED 25% MAY BE USED.



Hilti Firestop Systems

HILTI, Inc.
Tulsa, Oklahoma USA (800) 879-8000

Sheet 3 of 3

Scale -

Date Apr. 28, 2015

Drawing No.

**HWD
0750a**

Saving Lives through Innovation and Education