

## WALLS AND INTERIOR PARTITIONS, NONCOMBUSTIBLE

GA FILE NO. WP 1052

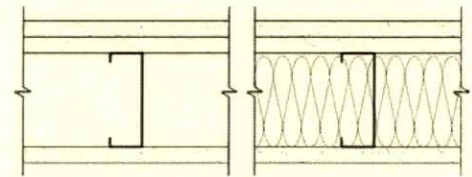
GENERIC

1 HOUR  
FIRE50 to 54 STC  
SOUND

### GYPSUM WALLBOARD, STEEL STUDS

One layer 5/8" type X gypsum wallboard or gypsum veneer base applied parallel or at right angles to each side of 3/8" steel studs 24" o.c. with 1" Type S drywall screws 8" o.c. at vertical joints and 12" o.c. at wall perimeter and intermediate studs. **Face** layer 5/8" type X gypsum wallboard or gypsum veneer base applied parallel or at right angles to ONE SIDE with 1 5/8" Type S drywall screws 12" o.c.

Joints staggered 24" each layer and side. Sound tested with 3 1/2" glass fiber friction fit in stud space. (NLB)



Thickness: 5 1/2"  
 Approx. Weight: 8 psf  
 Fire Test: See WP 1350  
 (FM WP-45, 6-19-68;  
 OSU T-1770, 8-61;  
 ULC 79T484, 79T500,  
 79T497, 8-21-81,  
 ULC Design W415)  
 Sound Test: NRCC 817-NV, 2-3-81

GA FILE NO. WP 1053

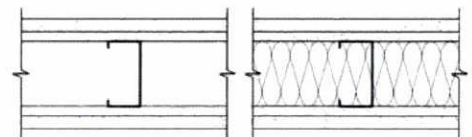
GENERIC

1 HOUR  
FIRE50 to 54 STC  
SOUND

### GYPSUM WALLBOARD, STEEL STUDS

**Base** layer 3/8" square edge regular gypsum wallboard or backing board applied parallel to each side of 2 1/2" steel studs 24" o.c. with 1" Type S drywall screws 12" o.c. **Face** layer 1/2" type X plain or predecorated gypsum wallboard or gypsum veneer base applied parallel to each side with 3/4" wide beads of laminating compound 12" o.c. to full field of face layer and 1 3/8" Type S drywall screws 8" o.c. at floor and ceiling runners only.

Joints staggered 24" each layer and side. Sound tested with 3 1/2" glass fiber insulation friction fit in stud space. (NLB)



Thickness: 4 1/4"  
 Approx. Weight: 7 psf  
 Fire Test: ULC 74T184, 4-10-75,  
 ULC Design W402  
 Sound Test: CK 8104.02, 2-3-81

GA FILE NO. WP 1055

PROPRIETARY

1 HOUR  
FIRE50 to 54 STC  
SOUND

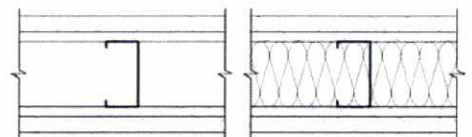
### GYPSUM WALLBOARD, STEEL STUDS

**Base** layer 3/8" square edge regular gypsum wallboard or backing board applied parallel to each side of 2 1/2" steel studs 24" o.c. with 1" Type S drywall screws 12" o.c. **Face** layer 5/8" proprietary type X plain or predecorated gypsum wallboard or gypsum veneer base applied parallel or at right angles to each side with laminating compound and 1 1/4" Type S drywall screws 8" o.c. at floor and ceiling runners only.

Horizontal joints on opposite sides need not be staggered or backed. Sound tested with 3 1/2" glass fiber insulation friction fit in stud space. (NLB)

### PROPRIETARY GYPSUM BOARD

CertainTeed Gypsum Canada Inc. - 5/8" CertainTeed® Type X Gypsum Board



Thickness: 4 1/2"  
 Approx. Weight: 7 psf  
 Fire Test: UL R3660, 07NK21428,  
 2-14-08,  
 ULC Design W402  
 Sound Test: CK 8104.02, 2-3-81

\*Contact the manufacturer for more detailed information on proprietary products.

