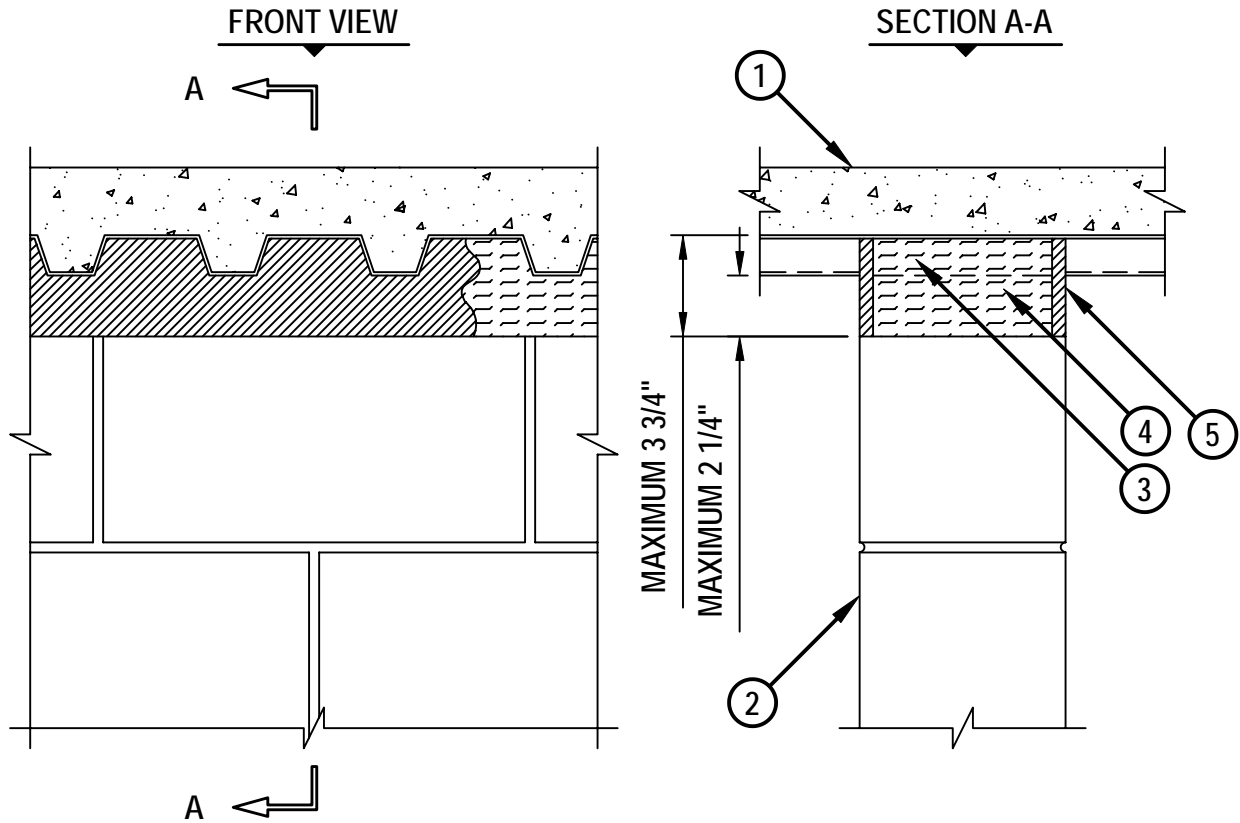


TOP OF WALL JOINT : 2-HR. CONCRETE WALL OR BLOCK WALL ASSEMBLY

ASSEMBLY RATING = 2-HR.

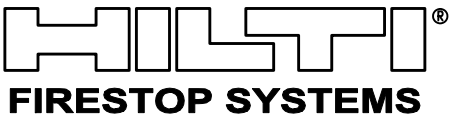
CLASS II MOVEMENT CAPABILITIES - 11% COMPRESSION OR EXTENSION



HWD0225b.032902

1. LIGHTWEIGHT OR NORMAL WEIGHT CONCRETE FLOOR (MIN. 2-1/2" THICK) OVER METAL DECKING (2-HR. FIRE-RATING) (UL/ULC CLASSIFIED D900 SERIES).
2. CONCRETE WALL ASSEMBLY (2-HR. FIRE-RATING) :
 - A. LIGHTWEIGHT OR NORMAL WEIGHT CONCRETE WALL (MIN. 5" THICK).
 - B. ANY UL/ULC CLASSIFIED CONCRETE BLOCK WALL.
3. HILTI CP 777 SPEED PLUGS FRICTION FITTED TO COMPLETELY FILL FLUTE, RECESSED 1/2" ON EACH SIDE OF WALL TO ACCOMMODATE FIRESTOP SEALANT. (SEE NOTE BELOW).
4. MINERAL WOOL (MIN. 4 PCF DENSITY) COMPRESSED 20% AND INSERTED INTO JOINT, RECESSED 1/2" ON EACH SIDE OF WALL TO ACCOMMODATE FIRESTOP SEALANT.
5. MINIMUM 1/2" DEPTH HILTI CP 606 FLEXIBLE FIRESTOP SEALANT FLUSH WITH BOTH SIDES OF WALL ASSEMBLY.

NOTE : AS AN ALTERNATE TO HILTI 777 SPEED PLUGS, MINERAL WOOL (MIN. 4 PCF DENSITY) COMPRESSED 20% MAY BE USED.



HILTI, Inc.
Tulsa, Oklahoma USA (918) 252-6000

Sheet	1 of 1
Scale	9/64" = 1"
Date	March 29, 2002

Drawing No.
**HWD
0225b**