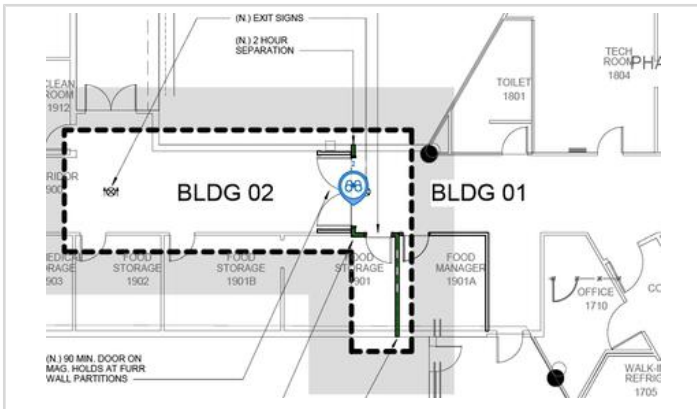


## Observation Work to Complete #2: Layout for new door

<b>Origin</b>		<b>Status</b>	Closed
<b>Created By</b>	Mike LaBonge (Brascia Builders, Inc.)	<b>Date Created</b>	Apr 11, 2025
<b>Assignee</b>		<b>Distribution</b>	
<b>Notification Date</b>		<b>Priority</b>	
<b>Location</b>	Building 1 Connection @ Building 2	<b>Trade</b>	Framing & Drywall
<b>Due Date</b>	Apr 18, 2025	<b>Private</b>	Yes
<b>Contributing Condition</b>		<b>Contributing Behavior</b>	
<b>Hazard</b>			
<b>Spec Section</b>			

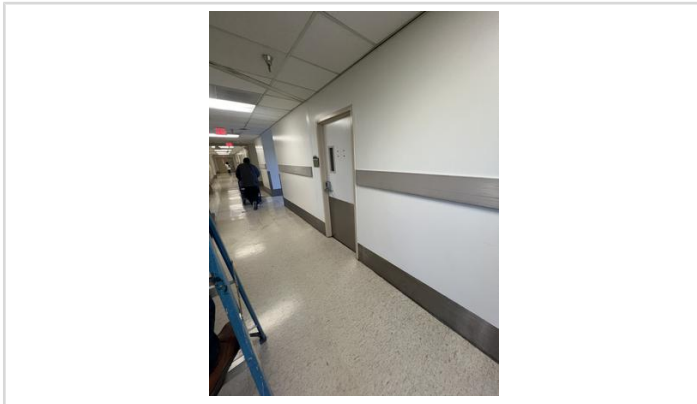
**Description** New corridor wall cannot be aligned with column. Needs to be shifted clear of new door into food storage area.

**Linked Drawings** [AE403: ENLARGED PLAN Rev.0](#)

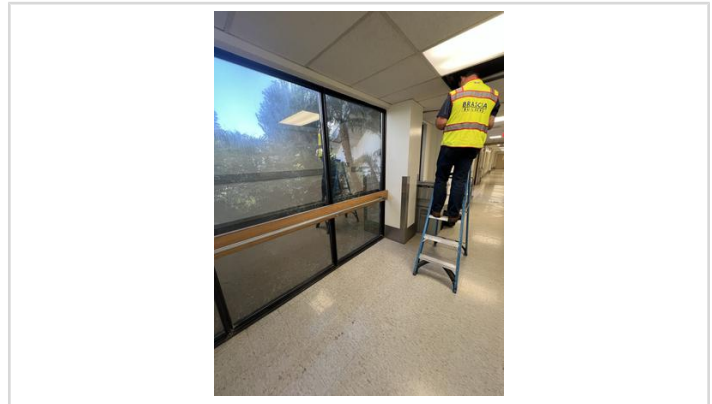


[AE403: ENLARGED PLAN Rev.0](#)

**Attachments** [Building 1 Connection @ Building 2.pdf](#)



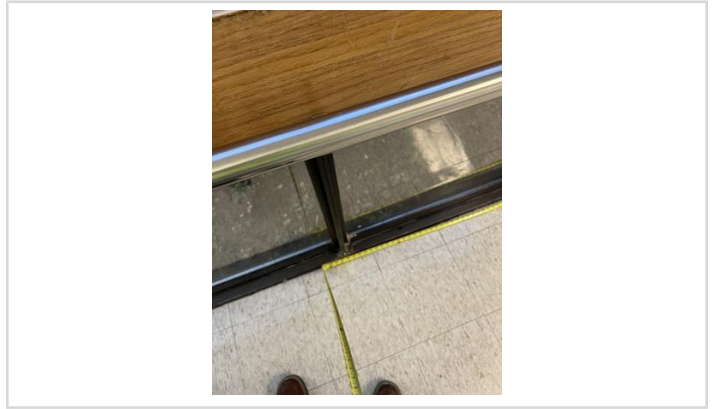
[B2017444-5E7B-4B0E-BB16-12FAE9893F12.jpeg](#)



[3B284626-BDB4-4CCD-A901-DF7EBE6AF385.jpeg](#)



[ECE47A20-C8FE-465F-BE7F-373C86A8D1D9.jpg](#)



[3CB9D982-E84D-4CF1-84F0-355584FD5B02.jpeg](#)



[7A6C2A76-9BC4-42FE-9E2F-0019B5E05108.jpg](#)

**Activity (1)**

Mike LaBonge  
04/15/2025 at 03:31 PM PDT

**Status Changed:** Closed