

TOP OF WALL JOINT : CONCRETE WALL OR BLOCK WALL ASSEMBLY

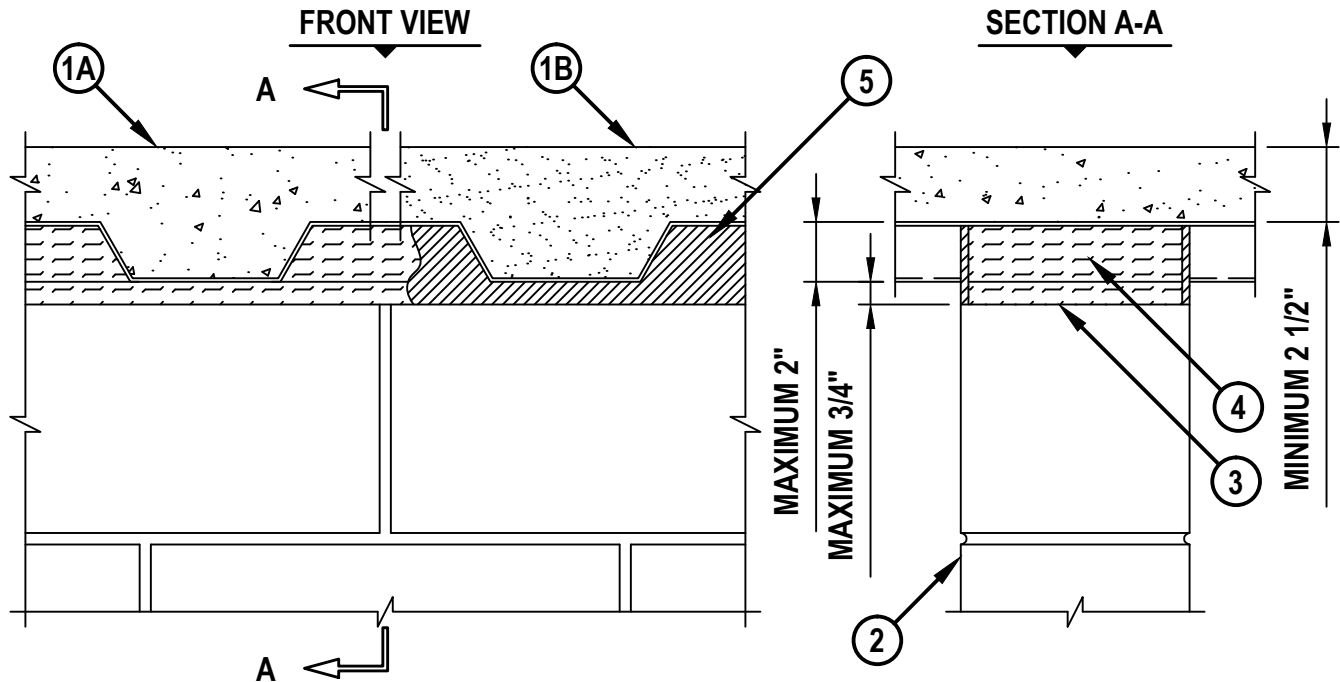
ASSEMBLY RATING = 2-HR.

CLASS II MOVEMENT CAPABILITIES - 17% COMPRESSION OR EXTENSION

L-RATING AT AMBIENT = LESS THAN 1 CFM/LIN FT

L-RATING AT 400°F = LESS THAN 1 CFM/LIN FT

HW-D-0155e.110311



1. FLOOR OR ROOF ASSEMBLY (2-HR. FIRE-RATING) :
 - A. LIGHTWEIGHT OR NORMAL WEIGHT CONCRETE FLOOR (MIN. 2-1/2" THICK) OVER METAL DECKING (UL/cUL CLASSIFIED D900 SERIES).
 - B. INSULATING CONCRETE (MIN. 2-1/4" THICK) OVER METAL DECKING (UL/cUL CLASSIFIED P900 SERIES).
2. CONCRETE WALL ASSEMBLY (2-HR. FIRE-RATING) :
 - A. LIGHTWEIGHT OR NORMAL WEIGHT CONCRETE WALL (MIN. 5" THICK).
 - B. ANY UL/cUL CLASSIFIED CONCRETE BLOCK WALL.
3. MINERAL WOOL (MIN. 4 PCF DENSITY) COMPRESSED 50% AND INSERTED INTO JOINT, RECESSED 1/4" ON EACH SIDE OF WALL TO ACCOMMODATE FIRESTOP SEALANT.
4. HILTI CP 777 SPEED PLUGS FRICTION FITTED TO COMPLETELY FILL FLUTE, RECESSED 1/4" ON EACH SIDE OF WALL TO ACCOMMODATE FIRESTOP SEALANT (SEE NOTE BELOW).
5. MINIMUM 1/4" DEPTH HILTI CP 606 FLEXIBLE FIRESTOP SEALANT FLUSH WITH BOTH SIDES OF CONCRETE WALL OR CONCRETE BLOCK WALL ASSEMBLY.

NOTE : AS AN ALTERNATE TO HILTI CP 777 SPEED PLUGS, MINERAL WOOL (MIN. 4 PCF DENSITY) COMPRESSED 20% MAY BE USED.



HILTI, Inc.
Tulsa, Oklahoma USA (800) 879-8000

Sheet	1 of 1
Scale	5/32" = 1"
Date	Nov. 03, 2011

Drawing No.
**HWD
0155e**