

composite sheet infill, see image for actual condition relating to pipes. The duct work is scheduled to be removed and replaced by 6 medical gas lines sized between 1/2" and 1"

GENERAL NOTES

A. PHASE 3 ENCOMPASSES THE RENOVATION OF OPERATING ROOMS #3 AND #4.

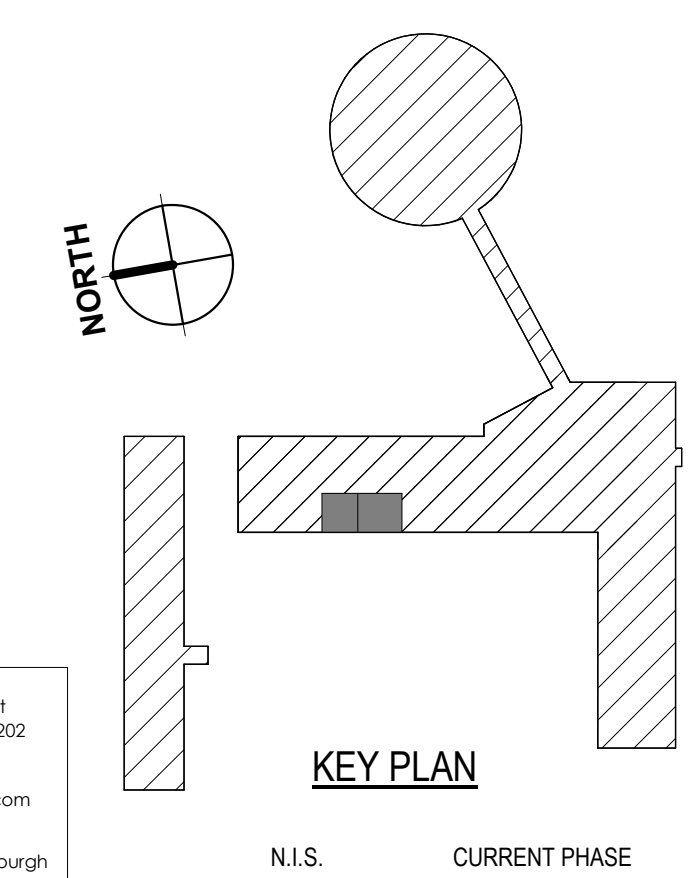
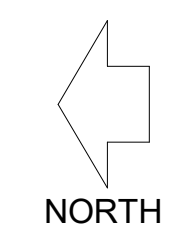
PLAN NOTES

1. PROVIDE 2" SANITARY DRAIN AND VENT PIPING, 1/2" DCW AND DHW PIPING TO SERVE NEW SCRUB SINK. INSTALL SCRUB SINK AND MAKE FINAL CONNECTIONS. CONFIRM FULL AND CORRECT OPERATION OF SCRUB SINK FOR UNIVERSITY'S USE. ALL PER MANUFACTURER'S WRITTEN INSTRUCTIONS.
2. EXTEND 2" DRAIN BRANCH UP THROUGH FOURTH FLOOR FROM EXISTING DRAIN PIPING ABOVE THIRD FLOOR CEILING (BELOW); EXTEND 2" VENT PIPING UP TO ABOVE CEILING AND CONNECT ONTO EXISTING VENT PIPING. CONNECT ONTO EXISTING DCW AND DHW WITH ISOLATION VALVES ABOVE FOURTH FLOOR CEILING AND EXTEND DOWN IN WALL TO SERVE SCRUB SINK.
3. PROVIDE DRIP PAN WATER TROUGH UNDER THE EXISTING SANITARY DRAIN AND VENT PIPING ABOVE THE O.R. CEILING AND EXTEND TO CORRIDOR WALL FOR COLLECTION PER FACILITIES GUIDELINES INSTITUTE (FGI) #2.1-8.4.2.6.1 a AND b. PROVIDE 1" DRAIN PIPING PER DETAIL H ON SHEET P0-070 AND EXTEND PIPING AS SHOWN. PIPING TO DISCHARGE TO OPEN FLOOR DRAIN OR MOP SINK FOR VISIBLE DETECTION OF LIQUID TO ALERT FACILITIES PERSONNEL OF LEAKING CONDITION. PROVIDE NOTIFICATION SIGN (WITH PERSONNEL CONTACT INFORMATION) ON DRAIN PIPING AT THIRD FLOOR LEVEL FOR VISUAL DETECTION OF LIQUID DISCHARGE.
4. EXISTING 5" SANITARY WASTE STACK PIPING AND VENT STACK PIPING FROM UNDER THE FOURTH FLOOR LEVEL TO REMAIN.
5. PROVIDE 2" SANITARY VENT UP WITHIN WALL SPACE SERVING MOP SINK DRAIN PIPING TO ABOVE CEILING AND CONNECT INTO EXISTING VENT PIPING COMPLETE WITH PROPER FITTINGS.
6. PROVIDE NEW 3/4" DCW & DHW PIPING UP FROM FLOOR BELOW WITHIN WALL SPACE AND CONNECT INTO NEW MOP SINK COMPLETE. PROVIDE FIRE STOPPING AT ALL WALL PENETRATIONS. SEE SHEET P3-320 FOR CONTINUATION OF PIPING.
7. NEW 3" SANITARY DRAIN PIPING FOR NEW MOP SINK DRAIN UP FROM 3RD FLOOR CEILING BELOW. CONNECT INTO MOP SINK WITH TRAP COMPLETE. SEE SHEET P3-320 FOR CONTINUATION OF PIPING.
8. FOR EACH DRAIN PAN ABOVE O.R. CEILINGS, PROVIDE KELE MODEL WD-2PR ROPE STYLE WATER DETECTOR NEAR THE CEILING ACCESS PANEL. FURNISH EACH WATER DETECTOR WITH APPROPRIATE LENGTH OF WATER-SENSING CABLE TO COVER ALL PANS WITHIN THE O.R (FURNISH AND INSTALL MOUNTING CLIPS, ACCESSORY #WD-CLIP-5 IN QUANTITIES REQUIRED FOR LENGTH OF CABLE, TO HOLD CABLE IN PAN ON 24" CENTERS). TC SUBCONTRACTOR SHALL PROVIDE 24VAC CIRCUIT TO EACH SENSOR AND SHALL WIRE ALARM OUTPUT TO THE BAS SYSTEM, ADDING THESE POINTS TO THE GRAPHICS TO INDICATE WHICH O.R IS IN ALARM. TC SUBCONTRACTOR SHALL PROVIDE ONE ALARM INPUT POINT TO THE BAS SYSTEM FOR EACH OF 9 O.R.S. WIRE ALARM POINTS TO DE-ENERGIZE ALARM CIRCUIT IF THE SENSOR SERVING THAT O.R DETECTS MOISTURE. AS AN ALTERNATE PRICE, PROVIDE A SECOND ALARM POINT FOR EACH O.R WIRE TO THE TROUBLE ALARM OUTPUT OF THE WATER DETECTOR AND INCLUDE IN GRAPHICS.
9. PROVIDE NEW MOP SINK COMPLETE AND INSTALL PER MANUFACTURERS INSTRUCTIONS.



1 PLUMBING ENLARGED FOURTH FLOOR NEW WORK PLAN - PHASE 3

P3-420 1/4" = 1'-0"



tec inc.
engineering & design
cleveland | columbus | pittsburgh

3073 N. High Street
Columbus, OH 43202
1.614.267.4928
1.614.267.5617
www.tecinceng.com



NO.	DATE	DESCRIPTION
11	06/09/25	BULLETIN 7
7	4/4/25	BULLETIN 3
6	4/4/25	BULLETIN 2

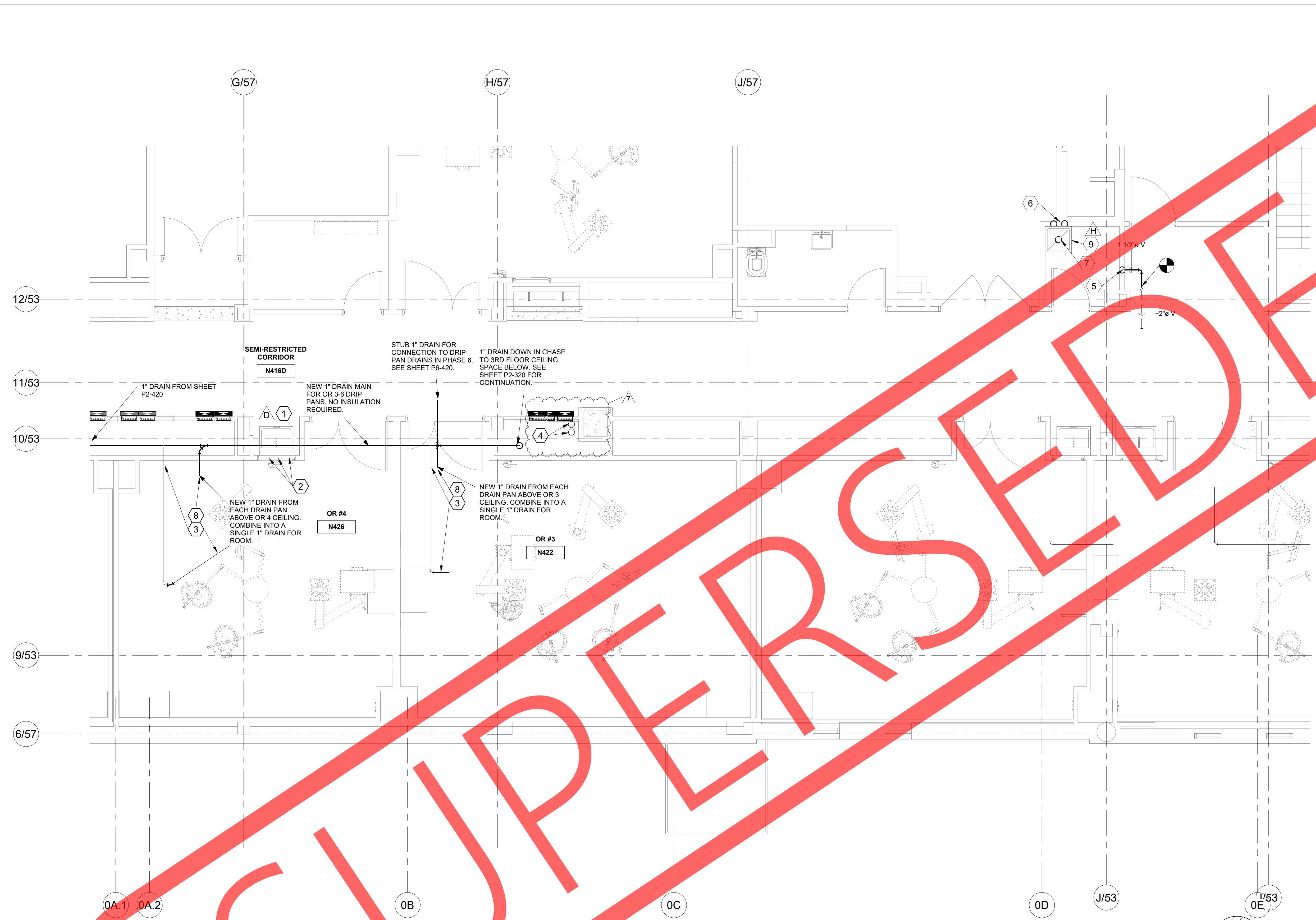
REVISIONS	
OSU PROJECT NUMBER	OSU-210545
UHE - 4TH FLOOR OR UPGRADES	
PREPARED FOR THE OHIO STATE UNIVERSITY FACILITIES OPERATIONS AND DEVELOPMENT COLUMBUS, OHIO	
PREPARED BY IKM / TEC INC / SCHAEFER	
PROJECT # - OSU-210545	
PLUMBING ENLARGED FOURTH FLOOR NEW WORK PLAN - PHASE 3	SHEET NUMBER P3-420
Archive Drawing Number	DRAWN BY JRC
	DATE 01.19.2024
	OF

GENERAL NOTES

A. PHASE 3 ENCOMPASSES THE RENOVATION OF OPERATING ROOMS #3 AND #4.

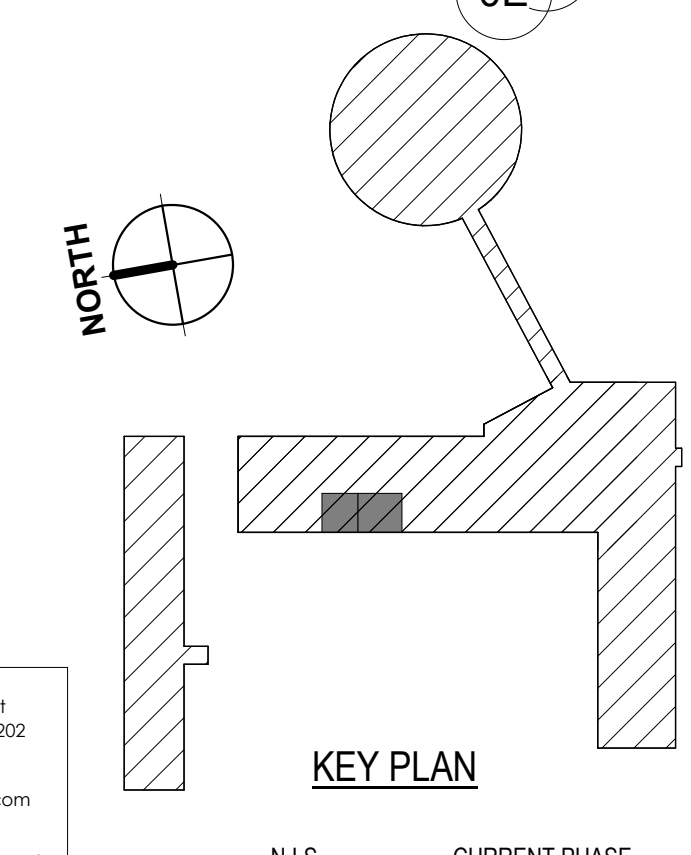
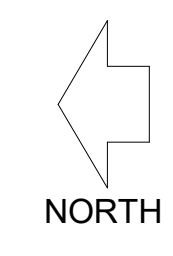
PLAN NOTES

1. PROVIDE 2" SANITARY DRAIN AND VENT PIPING, 1/2" DCW AND DHW PIPING TO SERVE NEW SCRUB SINK. INSTALL SCRUB SINK AND MAKE FINAL CONNECTIONS. CONFIRM FULL AND CORRECT OPERATION OF SCRUB SINK FOR UNIVERSITY'S USE. ALL PER MANUFACTURER'S WRITTEN INSTRUCTIONS.
2. EXTEND 2" DRAIN BRANCH UP THROUGH FOURTH FLOOR FROM EXISTING DRAIN PIPING ABOVE THIRD FLOOR CEILING (BELOW); EXTEND 2" VENT PIPING UP TO ABOVE CEILING AND CONNECT ONTO EXISTING VENT PIPING. CONNECT ONTO EXISTING DCW AND DHW WITH ISOLATION VALVES ABOVE FOURTH FLOOR CEILING AND EXTEND DOWN IN WALL TO SERVE SCRUB SINK.
3. PROVIDE DRIP PAN WATER TROUGH UNDER THE EXISTING SANITARY DRAIN AND VENT PIPING ABOVE THE O.R. CEILING AND EXTEND TO CORRIDOR WALL FOR COLLECTION PER FACILITIES GUIDELINES INSTITUTE (FGI) #2.1-8.4.2.6.1 a and b. PROVIDE 1" DRAIN PIPING PER DETAIL H ON SHEET P0-070 AND EXTEND PIPING AS SHOWN. PIPING TO DISCHARGE TO OPEN FLOOR DRAIN OR MOP SINK FOR VISIBLE DETECTION OF LIQUID TO ALERT FACILITIES PERSONNEL OF LEAKING CONDITION. PROVIDE NOTIFICATION SIGN (WITH PERSONNEL CONTACT INFORMATION) ON DRAIN PIPING AT THIRD FLOOR LEVEL FOR VISUAL DETECTION OF LIQUID DISCHARGE.
4. EXISTING 5" SANITARY WASTE STACK PIPING AND VENT STACK PIPING FROM UNDER THE FOURTH FLOOR LEVEL TO REMAIN.
5. PROVIDE 2" SANITARY VENT UP WITHIN WALL SPACE SERVING MOP SINK DRAIN PIPING TO ABOVE CEILING AND CONNECT INTO EXISTING VENT PIPING COMPLETE WITH PROPER FITTINGS.
6. PROVIDE NEW 3/4" DCW & DHW PIPING UP FROM FLOOR BELOW WITHIN WALL SPACE AND CONNECT INTO NEW MOP SINK COMPLETE. PROVIDE FIRE STOPPING AT ALL WALL PENETRATIONS. SEE SHEET P3-420 FOR CONTINUATION OF PIPING.
7. NEW 3" SANITARY DRAIN PIPING FOR NEW MOP SINK DRAIN UP FROM 3RD FLOOR CEILING BELOW. CONNECT INTO MOP SINK WITH TRAP COMPLETE. SEE SHEET P3-320 FOR CONTINUATION OF PIPING.
8. FOR EACH DRAIN PAN ABOVE O.R. CEILINGS, PROVIDE KELE MODEL WD-2PR ROPE STYLE WATER DETECTOR NEAR THE CEILING ACCESS PANEL. FURNISH EACH WATER DETECTOR WITH APPROPRIATE LENGTH OF WATER-SENSING CABLE TO COVER ALL PANS WITHIN THE O.R (FURNISH AND INSTALL MOUNTING CLIPS, ACCESSORY #WD-CLIP-5 IN QUANTITIES REQUIRED FOR LENGTH OF CABLE, TO HOLD CABLE IN PAN ON 24" CENTERS). TC SUBCONTRACTOR SHALL PROVIDE 24VAC CIRCUIT TO EACH SENSOR AND SHALL WIRE ALARM OUTPUT TO THE BAS SYSTEM, ADDING THESE POINTS TO THE GRAPHICS TO INDICATE WHICH O.R IS IN ALARM. TC SUBCONTRACTOR SHALL PROVIDE ONE ALARM INPUT POINT TO THE BAS SYSTEM FOR EACH OF 9 O.RS. WIRE ALARM POINTS TO DE-ENERGIZE ALARM CIRCUIT IF THE SENSOR SERVING THAT O.R DETECTS MOISTURE. AS AN ALTERNATE PRICE, PROVIDE A SECOND ALARM POINT FOR EACH O.R WIRED TO THE TROUBLE ALARM OUTPUT OF THE WATER DETECTOR AND INCLUDE IN GRAPHICS.
9. PROVIDE NEW MOP SINK COMPLETE AND INSTALL PER MANUFACTURERS INSTRUCTIONS.



PLUMBING ENLARGED FOURTH FLOOR NEW WORK PLAN - PHASE 3

P3-420 1/4" = 1'-0"

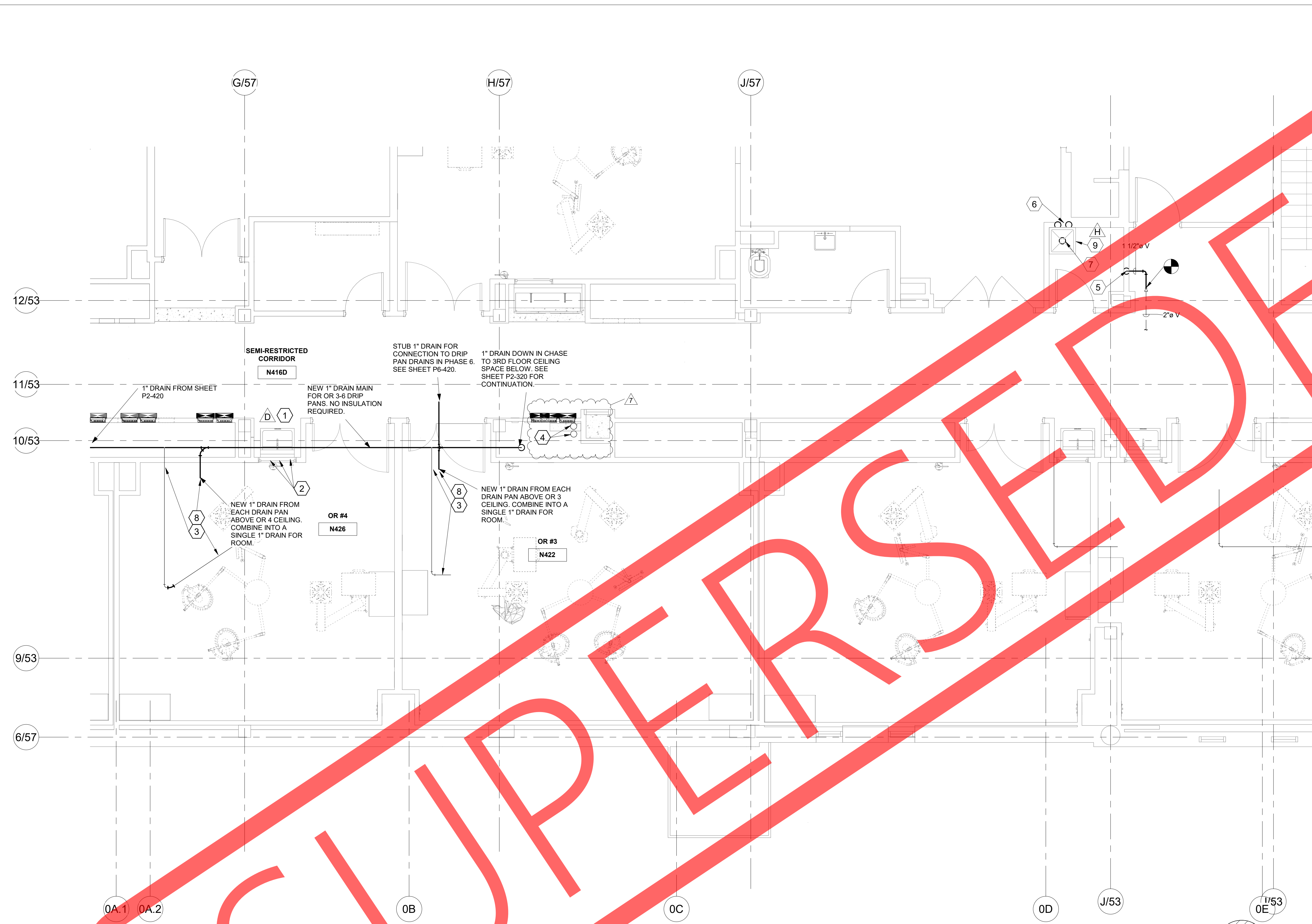


tec inc.
engineering & design
cleveland | columbus | pittsburgh

3073 N. High Street
Columbus, OH 43202
1.614.267.4928
1.614.267.5617
www.tecinceng.com



7	4/4/25	BULLETIN 3
6	4/4/25	BULLETIN 2
NO.	DATE	DESCRIPTION
REVISIONS		
OSU PROJECT NUMBER OSU-210545		
UHE - 4TH FLOOR OR UPGRADES		
PREPARED FOR THE OHIO STATE UNIVERSITY FACILITIES OPERATIONS AND DEVELOPMENT COLUMBUS, OHIO		
PREPARED BY IKM / TEC INC / SCHAEFER		
PLUMBING ENLARGED FOURTH FLOOR NEW WORK PLAN - PHASE 3		SHEET NUMBER P3-420
Archive Drawing Number	DRAWN BY JRC	DATE 01.19.2024
		OF



GENERAL NOTES

A. PHASE 3 ENCOMPASSES THE RENOVATION OF OPERATING ROOMS #3 AND #4.

PLAN NOTES

1. PROVIDE 2" SANITARY DRAIN AND VENT PIPING, 1/2" DCW AND DHW PIPING TO SERVE NEW SCRUB SINK. INSTALL SCRUB SINK AND MAKE FINAL CONNECTIONS. CONFIRM FULL AND CORRECT OPERATION OF SCRUB SINK FOR UNIVERSITY'S USE. ALL PER MANUFACTURER'S WRITTEN INSTRUCTIONS.
2. EXTEND 2" DRAIN BRANCH UP THROUGH FOURTH FLOOR FROM EXISTING DRAIN PIPING ABOVE THIRD FLOOR CEILING (BELOW); EXTEND 2" VENT PIPING UP TO ABOVE CEILING AND CONNECT ONTO EXISTING VENT PIPING. CONNECT ONTO EXISTING DCW AND DHW WITH ISOLATION VALVES ABOVE FOURTH FLOOR CEILING AND EXTEND DOWN IN WALL TO SERVE SCRUB SINK.
3. PROVIDE DRIP PAN WATER TROUGH UNDER THE EXISTING SANITARY DRAIN AND VENT PIPING ABOVE THE O.R. CEILING AND EXTEND TO CORRIDOR WALL FOR COLLECTION PER FACILITIES GUIDELINES INSTITUTE (FGI) #2.1-8.4.2.6.1 a and b. PROVIDE 1" DRAIN PIPING PER DETAIL H ON SHEET P0-070 AND EXTEND PIPING AS SHOWN. PIPING TO DISCHARGE TO OPEN FLOOR DRAIN OR MOP SINK FOR VISIBLE DETECTION OF LIQUID TO ALERT FACILITIES PERSONNEL OF LEAKING CONDITION. PROVIDE NOTIFICATION SIGN (WITH PERSONNEL CONTACT INFORMATION) ON DRAIN PIPING AT THIRD FLOOR LEVEL FOR VISUAL DETECTION OF LIQUID DISCHARGE.
4. EXISTING 5" SANITARY WASTE STACK PIPING AND VENT STACK PIPING FROM UNDER THE FOURTH FLOOR LEVEL TO REMAIN.
5. PROVIDE 2" SANITARY VENT UP WITHIN WALL SPACE SERVING MOP SINK DRAIN PIPING TO ABOVE CEILING AND CONNECT INTO EXISTING VENT PIPING COMPLETE WITH PROPER FITTINGS.
6. PROVIDE NEW 3/4" DCW & DHW PIPING UP FROM FLOOR BELOW WITHIN WALL SPACE AND CONNECT INTO NEW MOP SINK COMPLETE. PROVIDE FIRE STOPPING AT ALL WALL PENETRATIONS. SEE SHEET P3-420 FOR CONTINUATION OF PIPING.
7. NEW 3" SANITARY DRAIN PIPING FOR NEW MOP SINK DRAIN UP FROM 3RD FLOOR CEILING BELOW. CONNECT INTO MOP SINK WITH TRAP COMPLETE. SEE SHEET P3-320 FOR CONTINUATION OF PIPING.
8. FOR EACH DRAIN PAN ABOVE O.R. CEILINGS, PROVIDE KELE MODEL WD-2PR ROPE STYLE WATER DETECTOR NEAR THE CEILING ACCESS PANEL. FURNISH EACH WATER DETECTOR WITH APPROPRIATE LENGTH OF WATER-SENSING CABLE TO COVER ALL PANS WITHIN THE O.R (FURNISH AND INSTALL MOUNTING CLIPS, ACCESSORY #WD-CLIP-5 IN QUANTITIES REQUIRED FOR LENGTH OF CABLE, TO HOLD CABLE IN PAN ON 24" CENTERS). TC SUBCONTRACTOR SHALL PROVIDE 24VAC CIRCUIT TO EACH SENSOR AND SHALL WIRE ALARM OUTPUT TO THE BAS SYSTEM, ADDING THESE POINTS TO THE GRAPHICS TO INDICATE WHICH O.R IS IN ALARM. TC SUBCONTRACTOR SHALL PROVIDE ONE ALARM INPUT POINT TO THE BAS SYSTEM FOR EACH OF 9 O.RS. WIRE ALARM POINTS TO DE-ENERGIZE ALARM CIRCUIT IF THE SENSOR SERVING THAT O.R DETECTS MOISTURE. AS AN ALTERNATE PRICE, PROVIDE A SECOND ALARM POINT FOR EACH O.R WIRED TO THE TROUBLE ALARM OUTPUT OF THE WATER DETECTOR AND INCLUDE IN GRAPHICS.
9. PROVIDE NEW MOP SINK COMPLETE AND INSTALL PER MANUFACTURERS INSTRUCTIONS.

SEMI-RESTRICTED CORRIDOR N416D

1" DRAIN FROM SHEET P2-420

NEW 1" DRAIN MAIN FOR OR 3-6 DRIP PANS. NO INSULATION REQUIRED.

STUB 1" DRAIN FOR CONNECTION TO DRIP PAN DRAINS IN PHASE 6. SEE SHEET P6-420.

1" DRAIN DOWN IN CHASE TO 3RD FLOOR CEILING SPACE BELOW. SEE SHEET P2-320 FOR CONTINUATION.

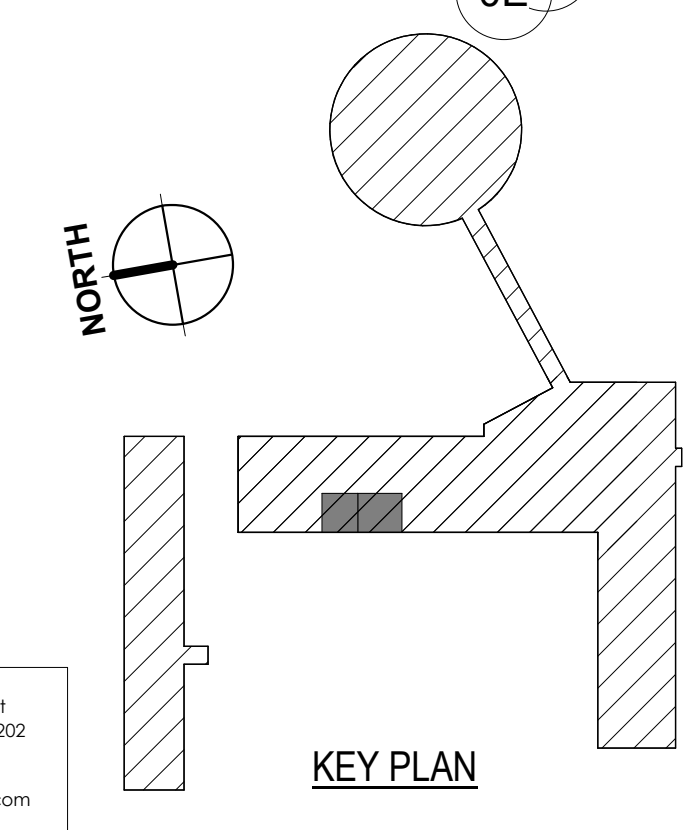
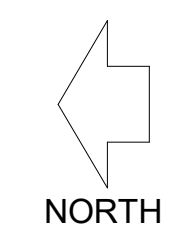
NEW 1" DRAIN FROM EACH DRAIN PAN ABOVE OR 3 CEILING. COMBINE INTO A SINGLE 1" DRAIN FOR ROOM.

OR #4 N426

OR #3 N422

PLUMBING ENLARGED FOURTH FLOOR NEW WORK PLAN - PHASE 3

P3-420 1/4" = 1'-0"

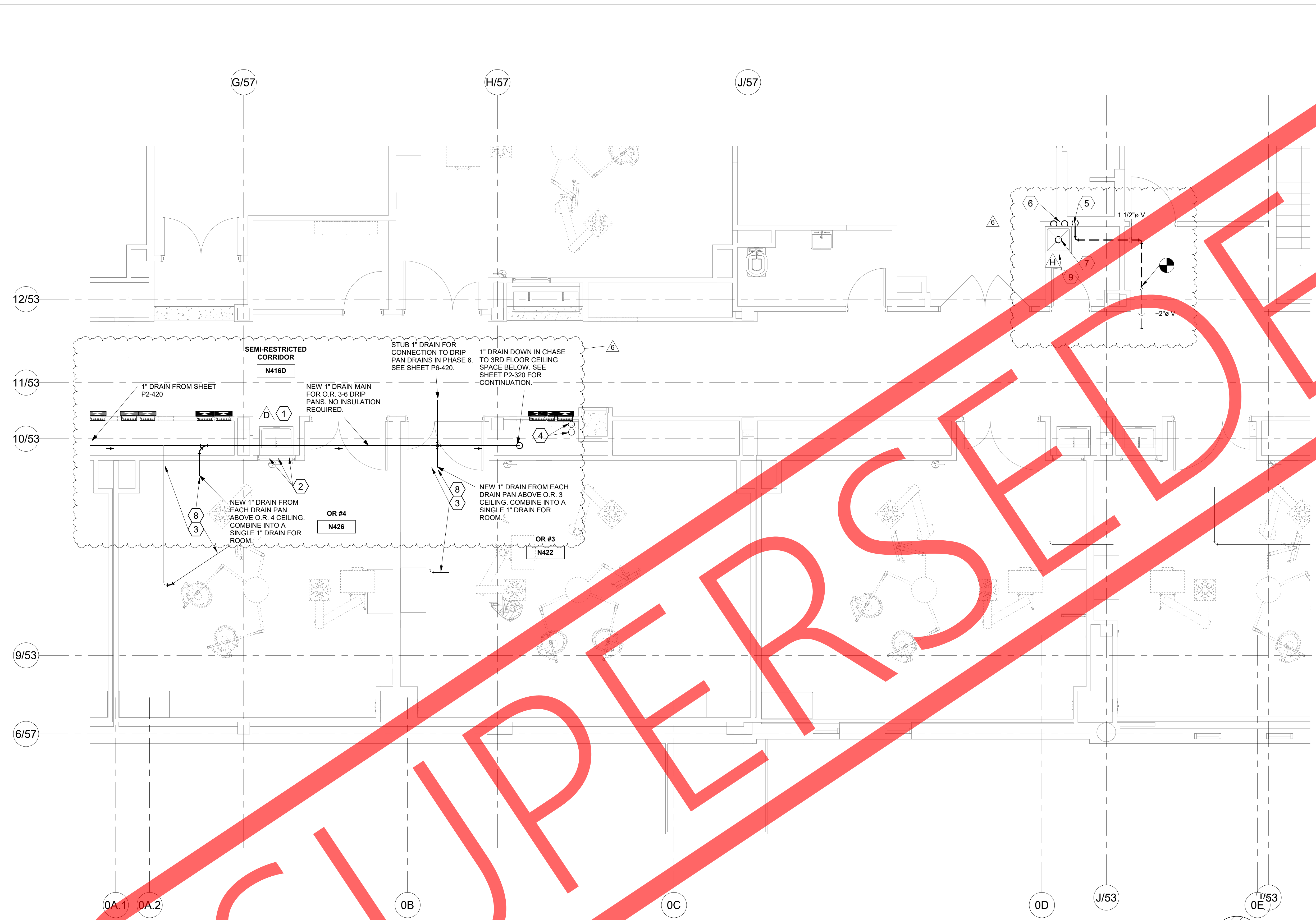


tec inc.
engineering & design
cleveland | columbus | pittsburgh

3073 N. High Street
Columbus, OH 43002
1.614.267.4928
1.614.267.5617
www.tecinceng.com



NO.	DATE	DESCRIPTION
7	4/4/25	BULLETIN 3
6	4/4/25	BULLETIN 2
REVISIONS		
OSU PROJECT NUMBER OSU-210545		
UHE - 4TH FLOOR OR UPGRADES		
PREPARED FOR THE OHIO STATE UNIVERSITY FACILITIES OPERATIONS AND DEVELOPMENT COLUMBUS, OHIO		
PREPARED BY IKM / TEC INC / SCHAEFER		
PLUMBING ENLARGED FOURTH FLOOR NEW WORK PLAN - PHASE 3		SHEET NUMBER P3-420
Archive Drawing Number	DRAWN BY JRC	DATE 01.19.2024
		OF



GENERAL NOTES

A. PHASE 3 ENCOMPASSES THE RENOVATION OF OPERATING ROOMS #3 AND #4.

PLAN NOTES

1. PROVIDE 2" SANITARY DRAIN AND VENT PIPING, 1/2" DCW AND DHW PIPING TO SERVE NEW SCRUB SINK. INSTALL SCRUB SINK AND MAKE FINAL CONNECTIONS. CONFIRM FULL AND CORRECT OPERATION OF SCRUB SINK FOR UNIVERSITY'S USE. ALL PER MANUFACTURER'S WRITTEN INSTRUCTIONS.
2. EXTEND 2" DRAIN BRANCH UP THROUGH FOURTH FLOOR FROM EXISTING DRAIN PIPING ABOVE THIRD FLOOR CEILING (BELOW); EXTEND 2" VENT PIPING UP TO ABOVE CEILING AND CONNECT ONTO EXISTING VENT PIPING. CONNECT ONTO EXISTING DCW AND DHW WITH ISOLATION VALVES ABOVE FOURTH FLOOR CEILING AND EXTEND DOWN IN WALL TO SERVE SCRUB SINK.
3. PROVIDE DRIP PAN WATER TROUGH UNDER THE EXISTING SANITARY DRAIN AND VENT PIPING ABOVE THE O.R. CEILING AND EXTEND TO CORRIDOR WALL FOR COLLECTION PER FACILITIES GUIDELINES INSTITUTE (FGI) #2, 1-8.4.2, 6.1 a and b. PROVIDE 1" DRAIN PIPING PER DETAIL H ON SHEET P0-070 AND EXTEND PIPING AS SHOWN. PIPING TO DISCHARGE TO OPEN FLOOR DRAIN OR MOP SINK FOR VISIBLE DETECTION OF LIQUID TO ALERT FACILITIES PERSONNEL OF LEAKING CONDITION. PROVIDE NOTIFICATION SIGN (WITH PERSONNEL CONTACT INFORMATION) ON DRAIN PIPING AT THIRD FLOOR LEVEL FOR VISUAL DETECTION OF LIQUID DISCHARGE.
4. EXISTING 5" SANITARY WASTE STACK PIPING AND VENT STACK PIPING FROM UNDER THE FOURTH FLOOR LEVEL TO REMAIN.
5. PROVIDE 2" SANITARY VENT UP WITHIN WALL SPACE SERVING MOP SINK DRAIN PIPING TO ABOVE CEILING AND CONNECT INTO EXISTING VENT PIPING COMPLETE WITH PROPER FITTINGS.
6. PROVIDE NEW 3/4" DCW & DHW PIPING UP FROM FLOOR BELOW WITHIN WALL SPACE AND CONNECT INTO NEW MOP SINK COMPLETE. PROVIDE FIRE STOPPING AT ALL WALL PENETRATIONS. SEE SHEET P3-320 FOR CONTINUATION OF PIPING.
7. NEW 3" SANITARY DRAIN PIPING FOR NEW MOP SINK DRAIN UP FROM 3RD FLOOR CEILING BELOW. CONNECT INTO MOP SINK WITH TRAP COMPLETE. SEE SHEET P3-320 FOR CONTINUATION OF PIPING.
8. FOR EACH DRAIN PAN ABOVE O.R. CEILINGS, PROVIDE KELE MODEL WD-2PR ROPE STYLE WATER DETECTOR NEAR THE CEILING ACCESS PANEL. FURNISH EACH WATER DETECTOR WITH APPROPRIATE LENGTH OF WATER-SENSING CABLE TO COVER ALL PANS WITHIN THE O.R (FURNISH AND INSTALL MOUNTING CLIPS, ACCESSORY #WD-CLIP-5 IN QUANTITIES REQUIRED FOR LENGTH OF CABLE. TO HOLD CABLE IN PAN ON 24" CENTERS). TC SUBCONTRACTOR SHALL PROVIDE 24VAC CIRCUIT TO EACH SENSOR AND SHALL WIRE ALARM OUTPUT TO THE BAS SYSTEM, ADDING THESE POINTS TO THE GRAPHICS TO INDICATE WHICH O.R IS IN ALARM. TC SUBCONTRACTOR SHALL PROVIDE ONE ALARM INPUT POINT TO THE BAS SYSTEM FOR EACH OF 9 O.R.S. WIRE ALARM POINTS TO DE-ENERGIZE ALARM CIRCUIT IF THE SENSOR SERVING THAT O.R DETECTS MOISTURE. AS AN ALTERNATE PRICE, PROVIDE A SECOND ALARM POINT FOR EACH O.R WIRED TO THE TROUBLE ALARM OUTPUT OF THE WATER DETECTOR AND INCLUDE IN GRAPHICS.
9. PROVIDE NEW MOP SINK COMPLETE AND INSTALL PER MANUFACTURERS INSTRUCTIONS.

SEMI-RESTRICTED CORRIDOR N416D

1" DRAIN FROM SHEET P2-420

NEW 1" DRAIN MAIN FOR O.R. 3-6 DRIP PANS. NO INSULATION REQUIRED.

STUB 1" DRAIN FOR CONNECTION TO DRIP PAN DRAINS IN PHASE 6. SEE SHEET P6-420.

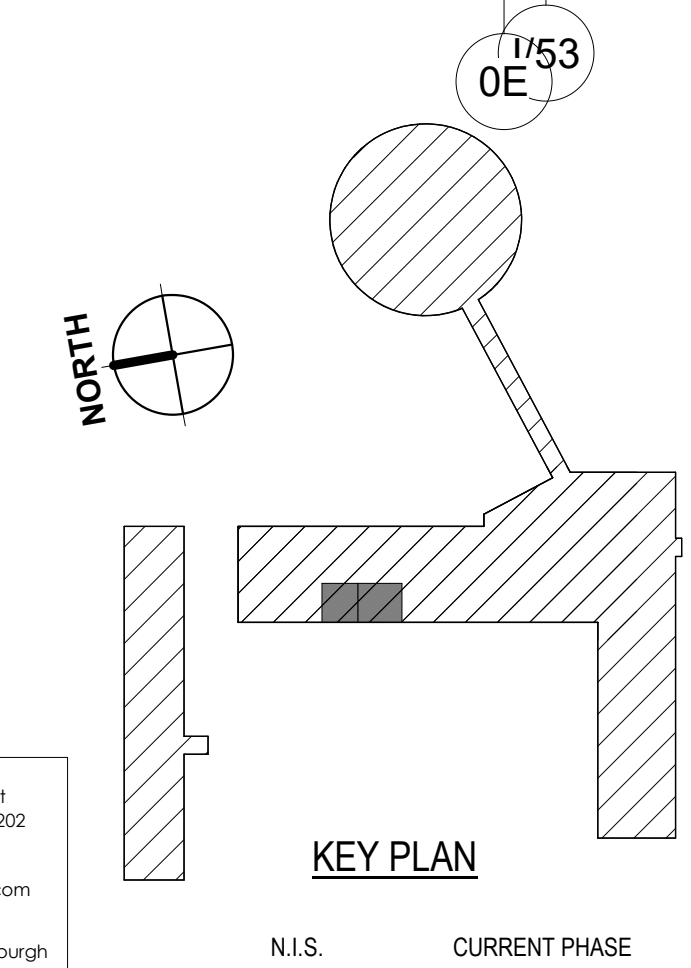
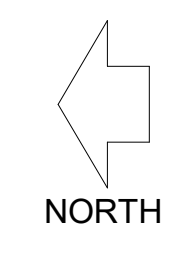
1" DRAIN DOWN IN CHASE TO 3RD FLOOR CEILING SPACE BELOW. SEE SHEET P2-320 FOR CONTINUATION.

NEW 1" DRAIN FROM EACH DRAIN PAN ABOVE O.R. 3 CEILING. COMBINE INTO A SINGLE 1" DRAIN FOR ROOM.

OR #4 N426

OR #3 N422

PLUMBING ENLARGED FOURTH FLOOR NEW WORK PLAN - PHASE 3
 P3-420 1/4" = 1'-0"



tec inc.
 engineering & design
 3073 N. High Street
 Columbus, OH 43202
 614.267.4928
 614.267.5617
 www.tecinc.com



NO.	DATE	DESCRIPTION
7	4/4/25	BULLETIN 3
6	4/4/25	BULLETIN 2

OSU PROJECT NUMBER **OSU-210545**
UHE - 4TH FLOOR OR UPGRADES

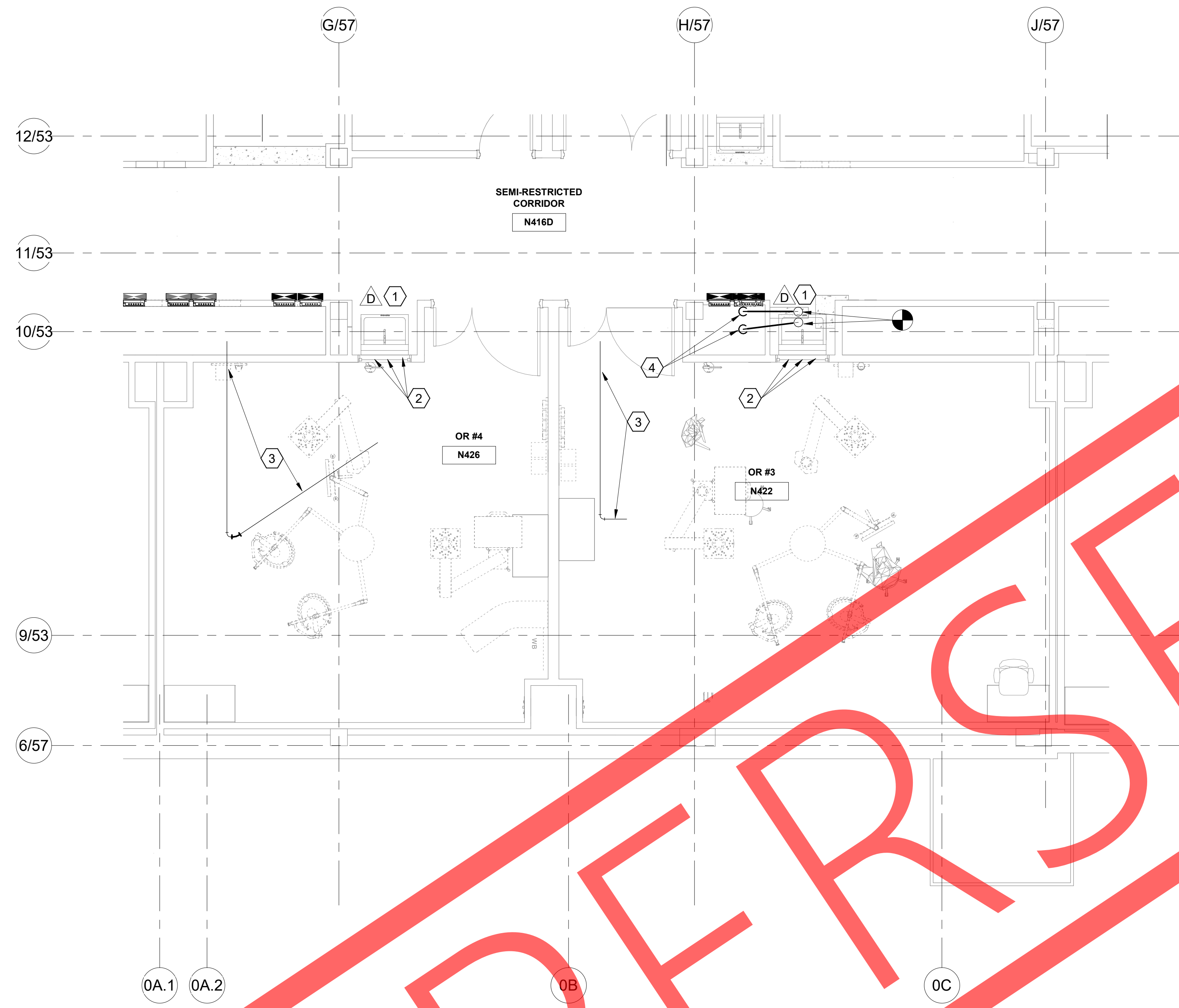
PREPARED FOR
 THE OHIO STATE UNIVERSITY
 FACILITIES OPERATIONS AND DEVELOPMENT
 COLUMBUS, OHIO

PREPARED BY
IKM / TEC INC / SCHAEFER PROJECT# - OSU-210545

PLUMBING ENLARGED FOURTH FLOOR
NEW WORK PLAN - PHASE 3

SHEET NUMBER
P3-420

Archive Drawing Number DRAWN BY JRC DATE 01.19.2024 OF



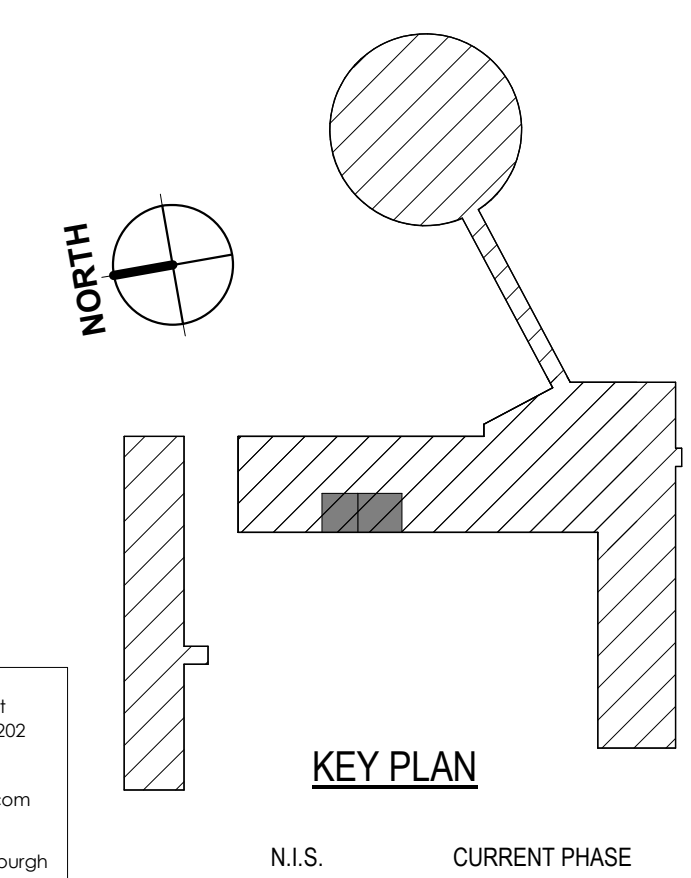
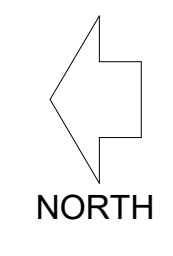
GENERAL NOTES

A. PHASE 3 ENCOMPASSES THE RENOVATION OF OPERATING ROOMS #3 AND #4.

PLAN NOTES

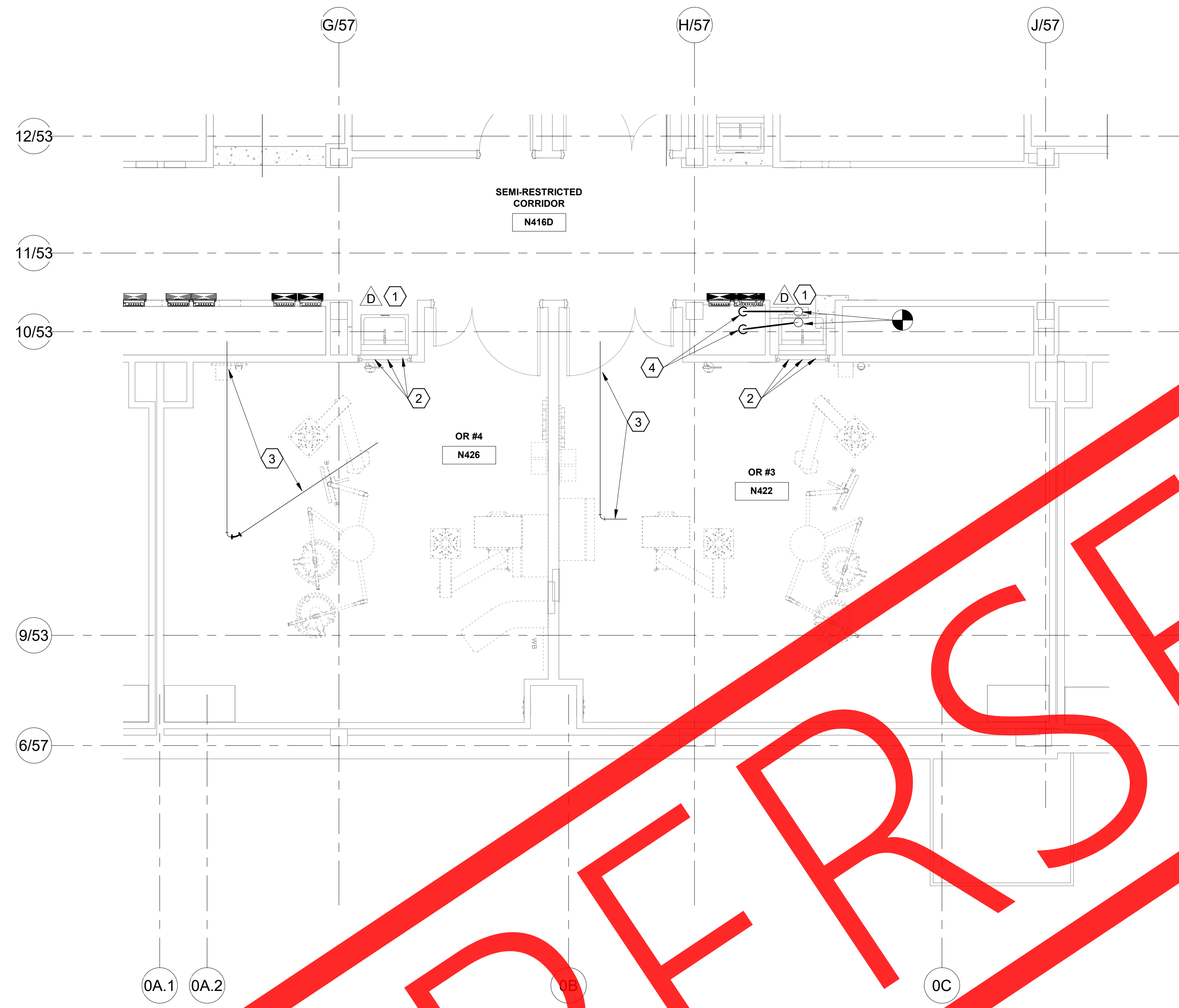
1. PROVIDE 2" SANITARY DRAIN AND VENT PIPING, 1/2" DCW AND DHW PIPING TO SERVE NEW SCRUB SINK. INSTALL SCRUB SINK AND MAKE FINAL CONNECTIONS. CONFIRM FULL AND CORRECT OPERATION OF SCRUB SINK FOR UNIVERSITY'S USE. ALL PER MANUFACTURER'S WRITTEN INSTRUCTIONS.
2. EXTEND 2" DRAIN BRANCH UP THROUGH FOURTH FLOOR FROM EXISTING DRAIN PIPING ABOVE THIRD FLOOR CEILING (BELOW); EXTEND 2" VENT PIPING UP TO ABOVE CEILING AND CONNECT ONTO EXISTING VENT PIPING. CONNECT ONTO EXISTING DCW AND DHW WITH ISOLATION VALVES ABOVE FOURTH FLOOR CEILING AND EXTEND DOWN IN WALL TO SERVE SCRUB SINK.
3. PROVIDE DRIP PAN WATER TROUGH UNDER THE EXISTING SANITARY DRAIN AND VENT PIPING ABOVE THE O.R. CEILING AND EXTEND TO CORRIDOR WALL FOR COLLECTION PER FACILITIES GUIDELINES INSTITUTE (FGI) #2.1-8.4.2.6.1 a AND b. CONNECT TO 2" DRAIN PIPING AND EXTEND PIPING DOWN THROUGH FOURTH FLOOR TO THIRD FLOOR. PIPING TO DISCHARGE TO OPEN FLOOR DRAIN FOR VISIBLE DETECTION OF LIQUID TO ALERT FACILITIES PERSONNEL OF LEAKING CONDITION. PROVIDE NOTIFICATION SIGN (WITH PERSONNEL CONTACT INFORMATION) ON DRAIN PIPING AT THIRD FLOOR LEVEL FOR VISUAL DETECTION OF LIQUID DISCHARGE.
4. RELOCATE/OFFSET THE 6" SANITARY WASTE STACK PIPING AND VENT STACK PIPING FROM UNDER THE FOURTH FLOOR LEVEL TO ABOVE THE FOURTH FLOOR CORRIDOR CEILING AS SHOWN - INTO THE CHASE WALL. SEE THIRD AND FOURTH FLOOR DEMOLITION SHEETS AND THE THIRD FLOOR NEW WORK SHEET FOR MORE INFORMATION.

1 PLUMBING ENLARGED FOURTH FLOOR NEW WORK PLAN - PHASE 3
P3-420 1/4" = 1'-0"



tec inc.
engineering & design
3073 N. High Street
Columbus, OH 43202
1.614.267.4928
1.614.267.5617
www.tecinceng.com
cleveland | columbus | pittsburgh

NO.	DATE	DESCRIPTION
REVISIONS		
OSU PROJECT NUMBER		OSU-210545
UHE - 4TH FLOOR OR UPGRADES		
PREPARED FOR THE OHIO STATE UNIVERSITY FACILITIES OPERATIONS AND DEVELOPMENT COLUMBUS, OHIO		
PREPARED BY		IKM / TEC INC / SCHAEFER
PROJECT #		OSU-210545
PLUMBING ENLARGED FOURTH FLOOR NEW WORK PLAN - PHASE 3		SHEET NUMBER P3-420
Archive Drawing Number	DRAWN BY JRC	DATE 01.19.2024
		OF



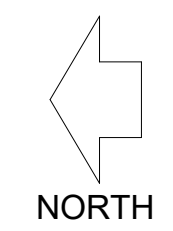
GENERAL NOTES

A. PHASE 3 ENCOMPASSES THE RENOVATION OF OPERATING ROOMS #3 AND #4.

PLAN NOTES

1. PROVIDE 2" SANITARY DRAIN AND VENT PIPING, 1/2" DCW AND DHW PIPING TO SERVE NEW SCRUB SINK. INSTALL SCRUB SINK AND MAKE FINAL CONNECTIONS. CONFIRM FULL AND CORRECT OPERATION OF SCRUB SINK FOR UNIVERSITY'S USE. ALL PER MANUFACTURER'S WRITTEN INSTRUCTIONS.
2. EXTEND 2" DRAIN BRANCH UP THROUGH FOURTH FLOOR FROM EXISTING DRAIN PIPING ABOVE THIRD FLOOR CEILING (BELOW); EXTEND 2" VENT PIPING UP TO ABOVE CEILING AND CONNECT ONTO EXISTING VENT PIPING. CONNECT ONTO EXISTING DCW AND DHW WITH ISOLATION VALVES ABOVE FOURTH FLOOR CEILING AND EXTEND DOWN IN WALL TO SERVE SCRUB SINK.
3. PROVIDE DRAIN WATER TROUGH UNDER THE EXISTING SANITARY DRAIN AND VENT PIPING ABOVE THE O.R. CEILING AND EXTEND TO CORRIDOR WALL FOR CONNECTION PER FACILITIES GUIDELINE INSTITUTE (FGI) #2.1.8-1.2.6.1 a AND b. CONNECT TO 2" DRAIN PIPING AND EXTEND PIPING DOWN THROUGH FOURTH FLOOR TO THIRD FLOOR. PIPING TO DISCHARGE TO OPEN FLOOR DRAIN FOR VISIBLE DETECTION OF LIQUID TO ALERT FACILITIES PERSONNEL OF LEAKING CONDITION. PROVIDE NOTIFICATION SIGN (WITH PERSONNEL CONTACT INFORMATION) ON DRAIN PIPING AT THIRD FLOOR LEVEL FOR VISUAL DETECTION OF LIQUID DISCHARGE.
4. RELOCATE/OFFSET THE 6" SANITARY WASTE STACK PIPING AND VENT STACK PIPING FROM UNDER THE FOURTH FLOOR LEVEL TO ABOVE THE FOURTH FLOOR CORRIDOR CEILING AS SHOWN INTO THE CHASE WALL. SEE THIRD AND FOURTH FLOOR DEMOLITION SHEETS AND THE THIRD FLOOR NEW WORK SHEET FOR MORE INFORMATION.

1 PLUMBING ENLARGED FOURTH FLOOR NEW WORK PLAN - PHASE 3
P3-420 1/4" = 1'-0"

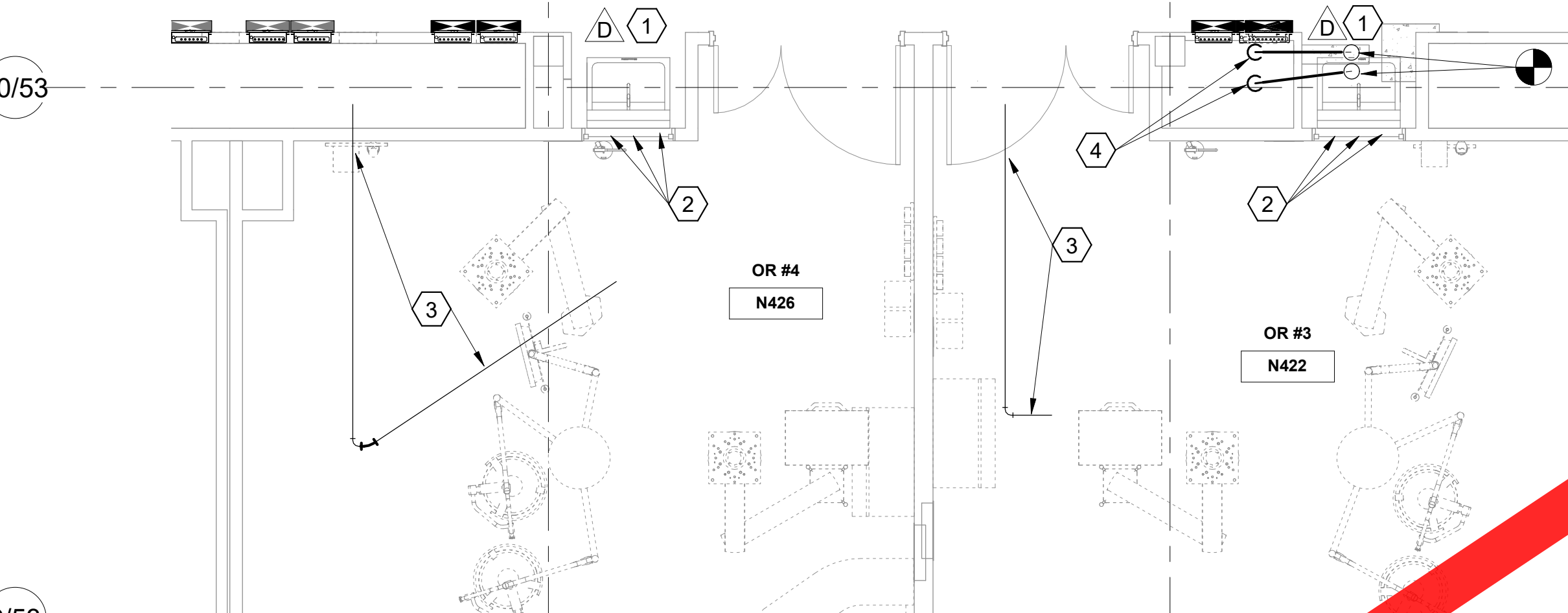


12/53
11/53
10/53
9/53
6/57
0A.1 0A.2 0B 0C

SEMI-RESTRICTED CORRIDOR
N416D

OR #4
N426

OR #3
N422



0A.1 0A.2 0B 0C

1
P3-420
1/4" = 1'-0"

PLUMBING ENLARGED FOURTH FLOOR NEW WORK PLAN - PHASE 3

NORTH

12/53

11/53

10/53

9/53

6/57

G/57

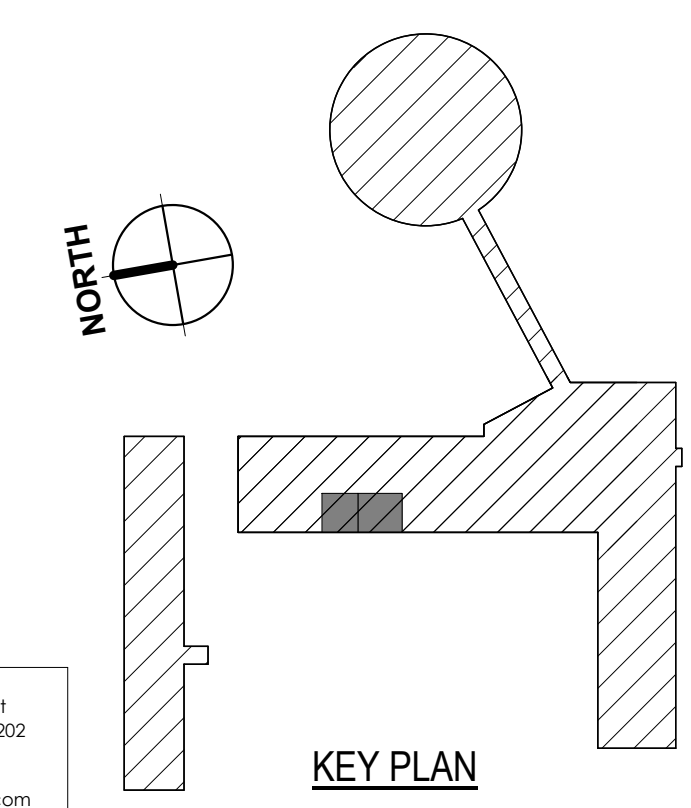
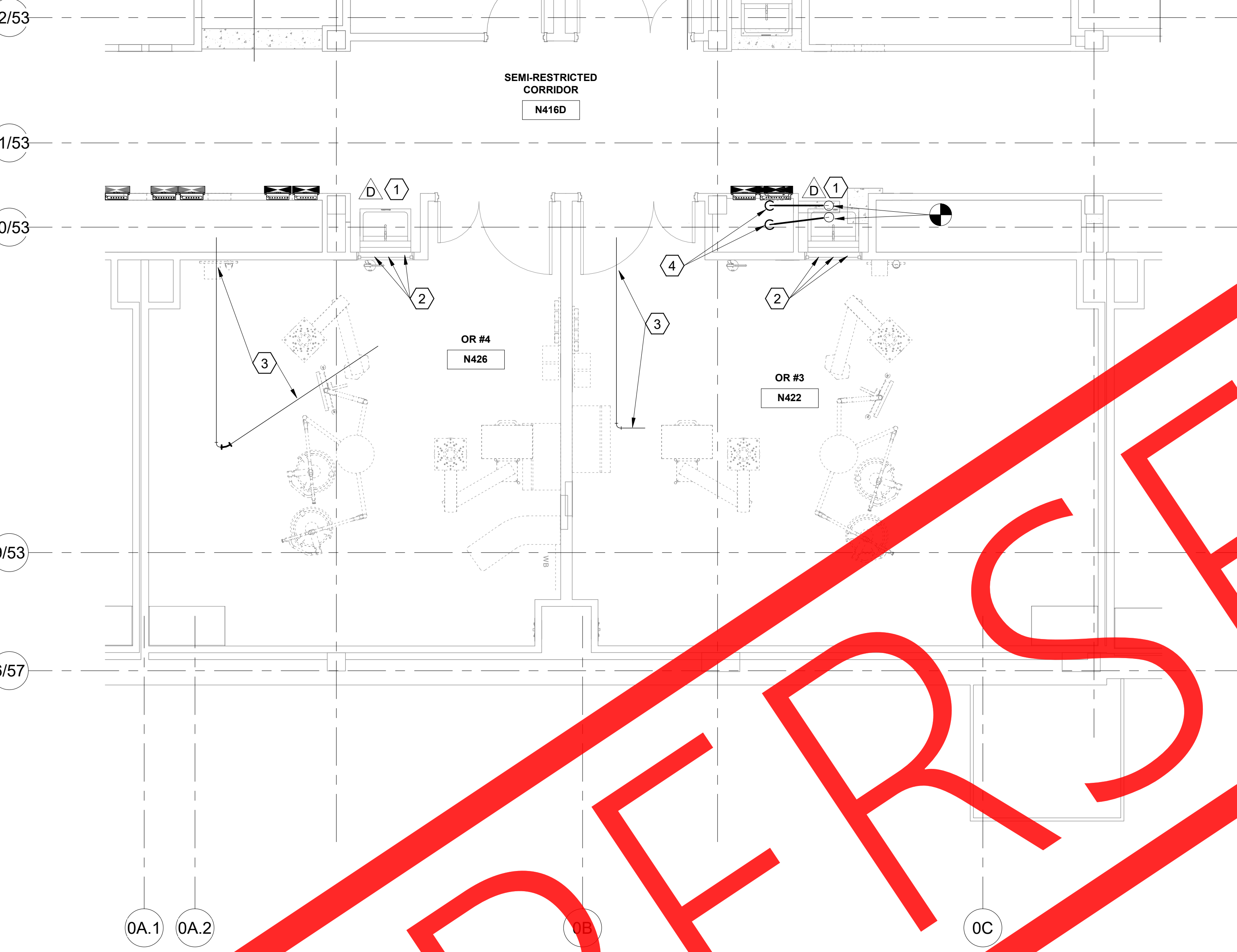
H/57

J/57

0A.1 0A.2

0B

0C



KEY PLAN

N.I.S. CURRENT PHASE

tec inc.
engineering & design
3073 N. High Street
Columbus, OH 43202
1.614.267.4928
1.614.267.5617
www.tecinceng.com
cleveland | columbus | pittsburgh



NO.	DATE	DESCRIPTION
REVISIONS		
OSU PROJECT NUMBER OSU-210545		
UHE - 4TH FLOOR OR UPGRADES		
PREPARED FOR THE OHIO STATE UNIVERSITY FACILITIES OPERATIONS AND DEVELOPMENT COLUMBUS, OHIO		
PREPARED BY IKM / TEC INC / SCHAEFER PROJECT # - OSU-210545		
PLUMBING ENLARGED FOURTH FLOOR NEW WORK PLAN - PHASE 3		SHEET NUMBER P3-420
Archive Drawing Number	DRAWN BY JRC	DATE 01.19.2024
		OF