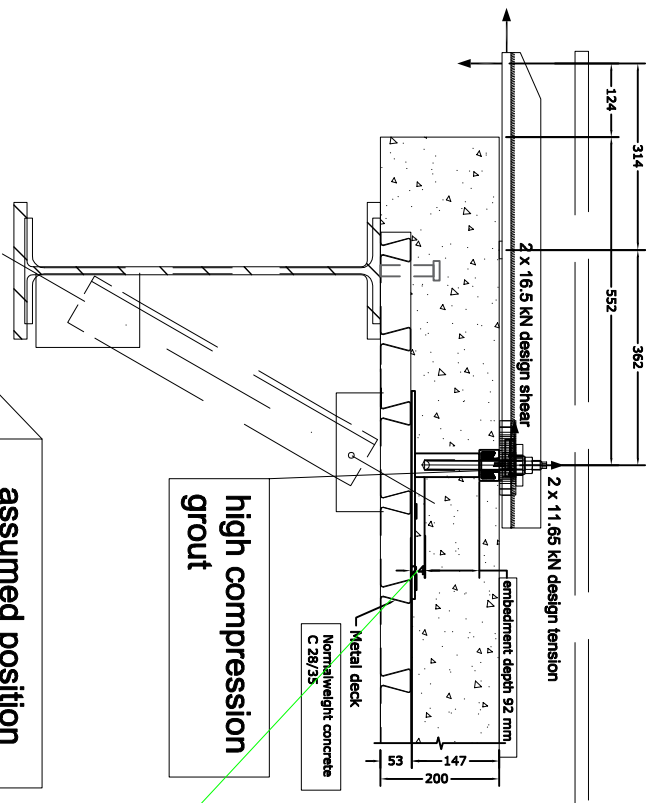


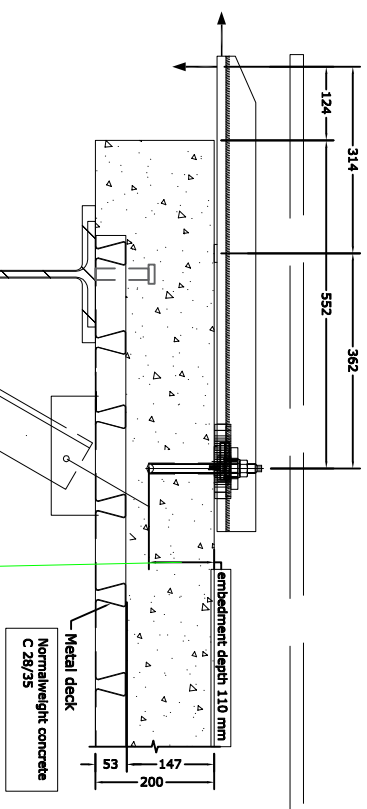
SECTION A-A:



high compression grout

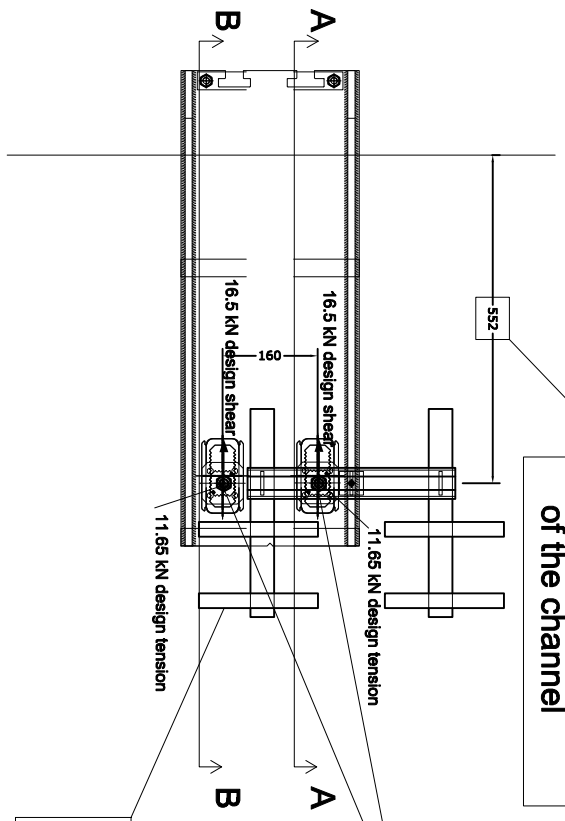
assumed position of the channel

SECTION B-B:



according to the software this is the max h ef based on 147 mm concrete thickness

as this anchor is installed through the anchor channel h ef should be increased here. Is the 24 mm of concrete at the bottom enough?



Hilti chemical anchors:
HIT-HY 200-A + HAS-U 8.8 M16

anchor channel out of tolerance