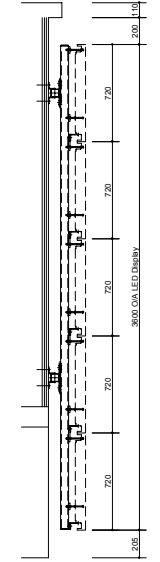
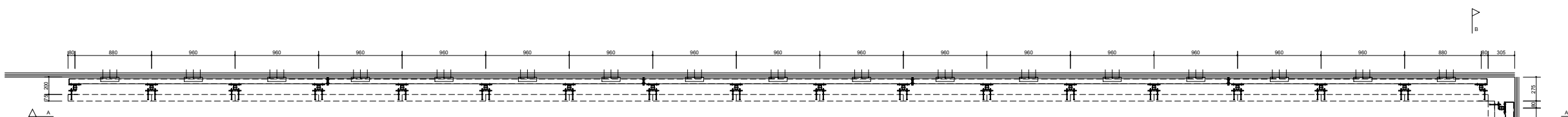


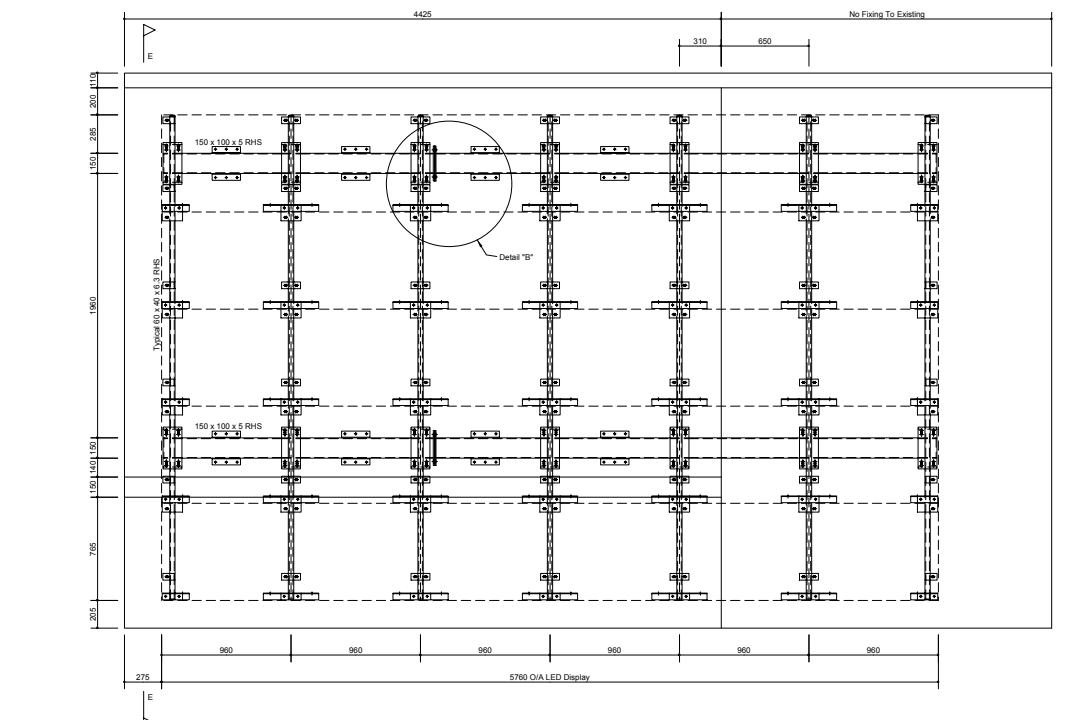
Main Front Elevation A - A



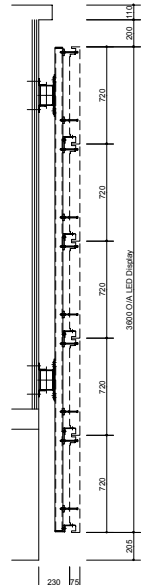
Side Elevation D - D



Plan View C - C



Front Elevation B - B



Side Elevation E - E

Maximum Steel Member Length 4000mm

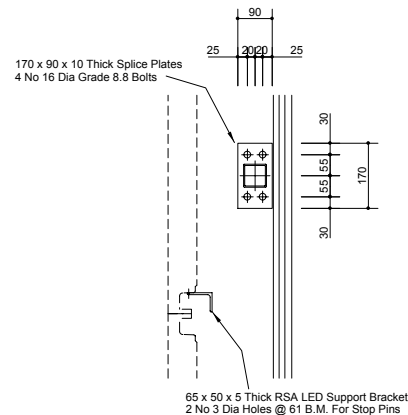
For Details "A" & "B" See Drg L/02

This Drawing To Be Read In Conjunction With AOTO Installation Manual

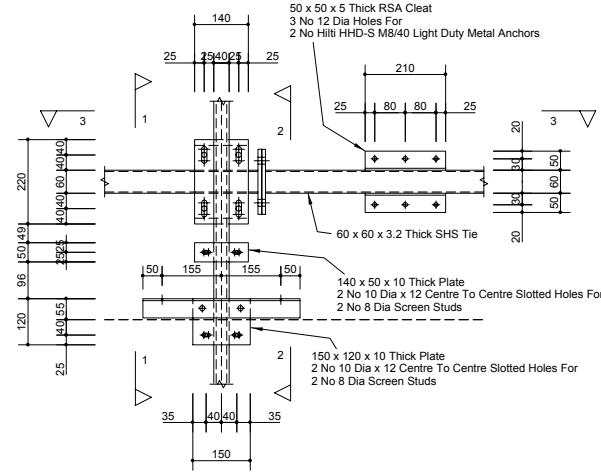
- NOTES
- 1.0 Steelwork Generally Shall Be In Accordance With The National Structural Steelwork Specification For Building Construction (NSASCSI) 7th Edition.
 - 2.0 Steel To Be Grade S355 J0 (S355 J2H for hollow sections) for all steel with wall/flange/web thicknesses 12mm or less, over 12mm thick the grade is to be S355 J0. Plates are to be S275 JR for thicknesses of 15mm or less, over 15mm thick the grade is to be S275 J2. All in accordance with BS EN 10025.
 - 3.0 All Bolts Are To Be BCP Grade 8.8 In Accordance With BS 4190 And BS 4320. (These References Will Be Upgraded When All Parts Of BS EN 15048 Are Published).
 - 4.0 All Welds To Be In Accordance With Consumables For Use In Metal Arc Welding To Comply With BS EN ISO 2560, BS EN 484, BS EN 756 & BS EN 758. As Appropriate. Weld Thickness Refer To Leg Length And NOT Throat Thickness.
 - 5.0 All Dimensions To Be Checked On Site Prior To Any Steelwork Being Fabricated. All Dimensions In Millimeters.
 - 6.0 General Steel Connections Are To Have A Minimum 2 No M16 Grade 8.8 BCP Bolts.
 - 7.0 Paint And Steelwork Preparation Unless Noted Otherwise: (a) Shot Blast SA 2.5 (b) C2 Paint Specification, RAL T.B.C.
 - 8.0 Note CE Marking: Consequence Class - CC2, Service Category - SC1, Production Category - PC2, Execution Class - EXC2.
 - 9.0 All Dimensions In Millimeters U.N.O.

Revision	Description	Init.	Date
Status	APPROVAL		
Project	LED Display Eastbrook Studios	Title	LED Display Steel Design Layouts
		Paint	See Note 7
<p>Electronic Display Services Limited 47 Gortopps Road, Coalsland, Northern Ireland BT11 4GG Tel: (028) 8774 7333 Fax: (028) 8774 6966</p>			
Scale	1:20 @ A0	Drawn	A.S.
Date	Feb 25	Chkd	
Org No.	2614 / L / 01	Rev	

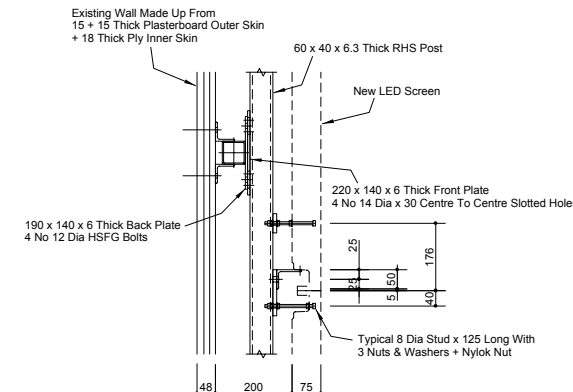
Fixings To Existing Stud Wall Via Hilti M8/40 Light Duty Metal Anchors Are By Using 2 Out Of The 3 Vertical Pairs Of Holes (4 Fixings In Total) Spare Holes Are In Case Vertical SFS System Channel Hit



Section 2 - 2

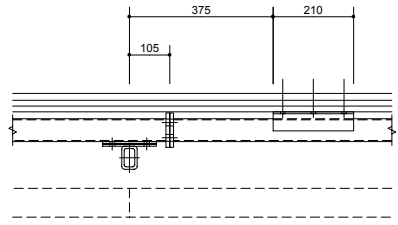


Detail "A"



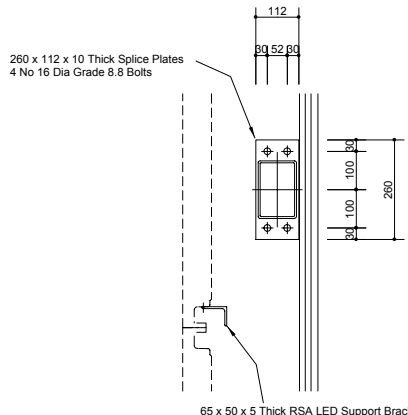
Section 1 - 1

Maximum Steel Member Length 4000mm

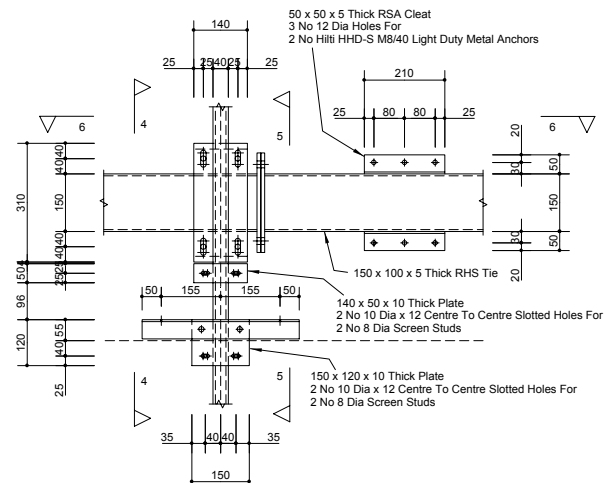


Section 3 - 3

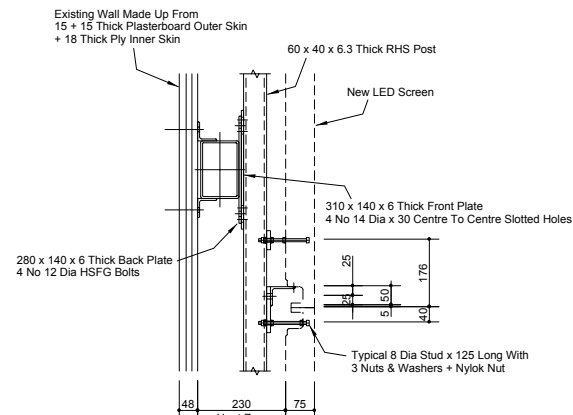
Tolerances In Steel
 X Axis Horizontally +/-6mm (LED Stud Fixing)
 Y Axis Vertically +/-15mm (HSFG Bolt Fixing)
 Z Axis In & Out +/-20mm (LED Stud To Plate)



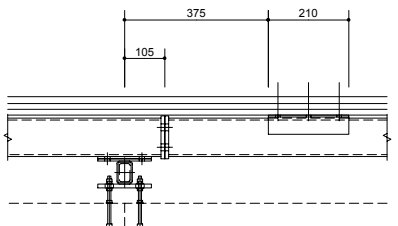
Section 5 - 5



Detail "B"



Section 4 - 4



Section 6 - 6

For Location Of Details "A" & "B" See Drg L/01

This Drawing To Be Read In Conjunction With AOTO Installation Manual

- NOTES
- STEELWORK
- 1.0 Steelwork Generally Shall Be In Accordance With "The National Structural Steelwork Specification For Building Construction" (BCSA/SCI) 7th Edition.
 - 2.0 Steel To Be Grade S355 J0 (S355 J2H for hollow sections) for all steel with wall/flange/web thicknesses 12mm or less, over 12mm thick the grade is to be S355 J0. Plates are to be S275 JR for thicknesses of 15mm or less, over 15mm thick the grade is to be S275 J2. All in accordance with BS EN 10025.
 - 3.0 All Bolts Are To Be BZP Grade 8.8 In Accordance With BS 4190 And BS 4320. (These References Will Be Upgraded When All Parts Of BS EN 15048 Are Published).
 - 4.0 All Welds To Be In Accordance With Consumables For Use In Metal Arc Welding To Comply With BS EN ISO 2560, BS EN 440, BS EN 756 & BS EN 758 As Appropriate. Weld Thickness Refers To Leg Length And NOT Throat Thickness.
 - 5.0 All Dimensions To Be Checked On Site Prior To Any Steelwork Being Fabricated. All Dimensions In Millimetres.
 - 6.0 General Steel Connections Are To Have A Minimum 2 No M16 Grade 8.8 BZP Bolts.
 - 7.0 Paint And Steelwork Preparation Unless Noted Otherwise :
 (a) Shot Blast SA 2.5
 (b) C2 Paint Specification, RAL T.B.C.
 - 8.0 Note CE Marking:
 Consequence Class - CC2
 Service Category - SC1
 Production Category - PC2
 Execution Class - EXC2
 - 9.0 All Dimensions In Millimetres U.N.O.

Revision	Description	Init.	Date
Status	APPROVAL		
Project	LED Display Eastbrook Studios	Title	LED Display Steel Design Details
		Paint	See Note 7

Electronic Display Services Limited
 47 Gortgonis Road, Coalisland, Northern Ireland BT71 4QG Tel: (028) 8774 7333 Fax: (028) 8774 6500

Scale	Drawn	Date	Chkd	Drg No.	Rev
1:10 @ A1	A.S.	Feb 25		2614 / L / 02	