

UL SYSTEM NO. F-C-2205

# PLASTIC PIPE THROUGH WOOD FLOOR/CEILING ASSEMBLY

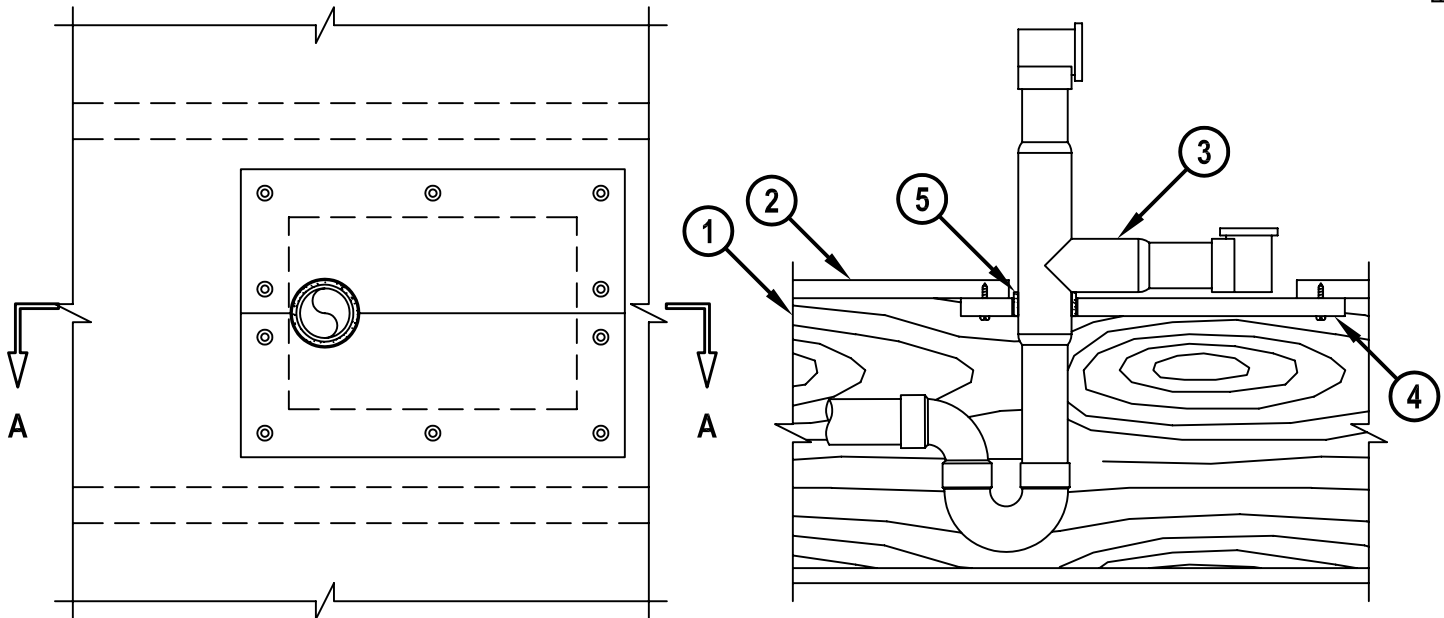
F-RATING = 1-HR.

T-RATING = 1-HR.

FC2205b.061305

**BOTTOM VIEW**

**SECTION A-A**



1. WOOD FLOOR/CEILING ASSEMBLY (UL CLASSIFIED L500 SERIES) (1-HR. FIRE-RATING).
2. LUMBER OR PLYWOOD SUBFLOOR WITH FINISH FLOOR OF LUMBER, PLYWOOD, OR FLOOR TOPPING MIXTURE.
3. MAXIMUM 1-1/2" NOMINAL DIAMETER PVC OR ABS PLASTIC PIPE (SCHEDULE 40) AND DRAIN FITTINGS CEMENTED TOGETHER WITH PVC OR ABS BATHTUB WASTE/OVERFLOW FITTINGS.
4. 3/4" THICK PLYWOOD PATCH OR 5/8" THICK GYPSUM WALLBOARD, SIZED TO OVERLAP MINIMUM 2" BEYOND EACH EDGE OF RECTANGULAR OPENING. TWO PIECES POSITIONED AROUND DRAIN PIPING WITH CUT EDGES TIGHTLY BUTTED, AND SCREW ATTACHED TO UNDERSIDE OF SUBFLOOR WITH 1-1/4" LONG STEEL SCREWS (SPACED MAXIMUM 6" C/C) (SEE NOTE NO. 3 BELOW).
5. HILTI CP 648E WRAP STRIP (NOMINAL 3/16" THICK x 1" WIDE) CONTINUOUSLY WRAPPED AROUND THE OUTER CIRCUMFERENCE OF THE PIPE, ONCE, AND HELD IN PLACE WITH TAPE. WRAP STRIP TO BE INSTALLED FLUSH WITH BOTTOM SURFACE OF PATCH.

**NOTES :** 1. MAXIMUM SIZE OF OPENING = 12" x 8".

2. DIAMETER OF OPENING HOLE SAWED THROUGH PATCH TO BE 1/2" LARGER THAN OUTSIDE DIAMETER OF DRAIN PIPE AND POSITIONED SUCH THAT THE PIPING IS CENTERED IN THE OPENING.

3. AS AN ALTERNATE TO HILTI CP 648E WRAP STRIP, HILTI CP 648S/1.5" WRAP STRIP MAY BE USED ON 1-1/2" PIPES. WRAP HILTI CP 648S WRAP STRIP AROUND THE CIRCUMFERENCE OF THE PIPE AND HOLD IN PLACE WITH INTEGRATED TAPE. WRAP STRIP TO BE SLID INTO ANNULAR SPACE, FLUSH WITH BOTTOM SURFACE OF GYPSUM BOARD.

**HILTI**<sup>®</sup>  
**FIRESTOP SYSTEMS**

HILTI, Inc.  
Tulsa, Oklahoma USA (918) 252-6000

Sheet 1 of 1

Scale 1/8" = 1"

Date June 13, 2005

Drawing No.

**FC**  
**2205b**

*Saving Lives through Innovation and Education*