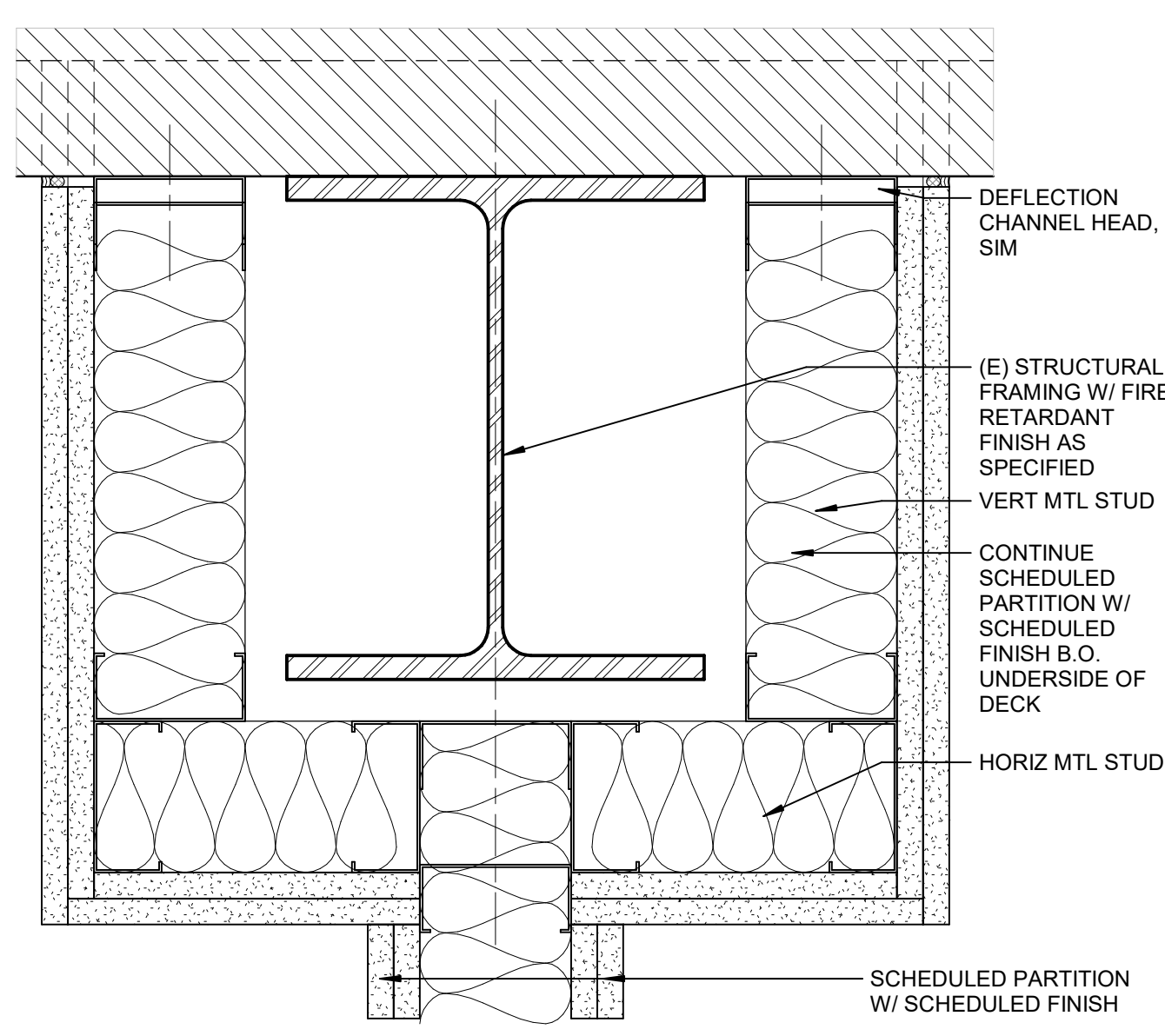
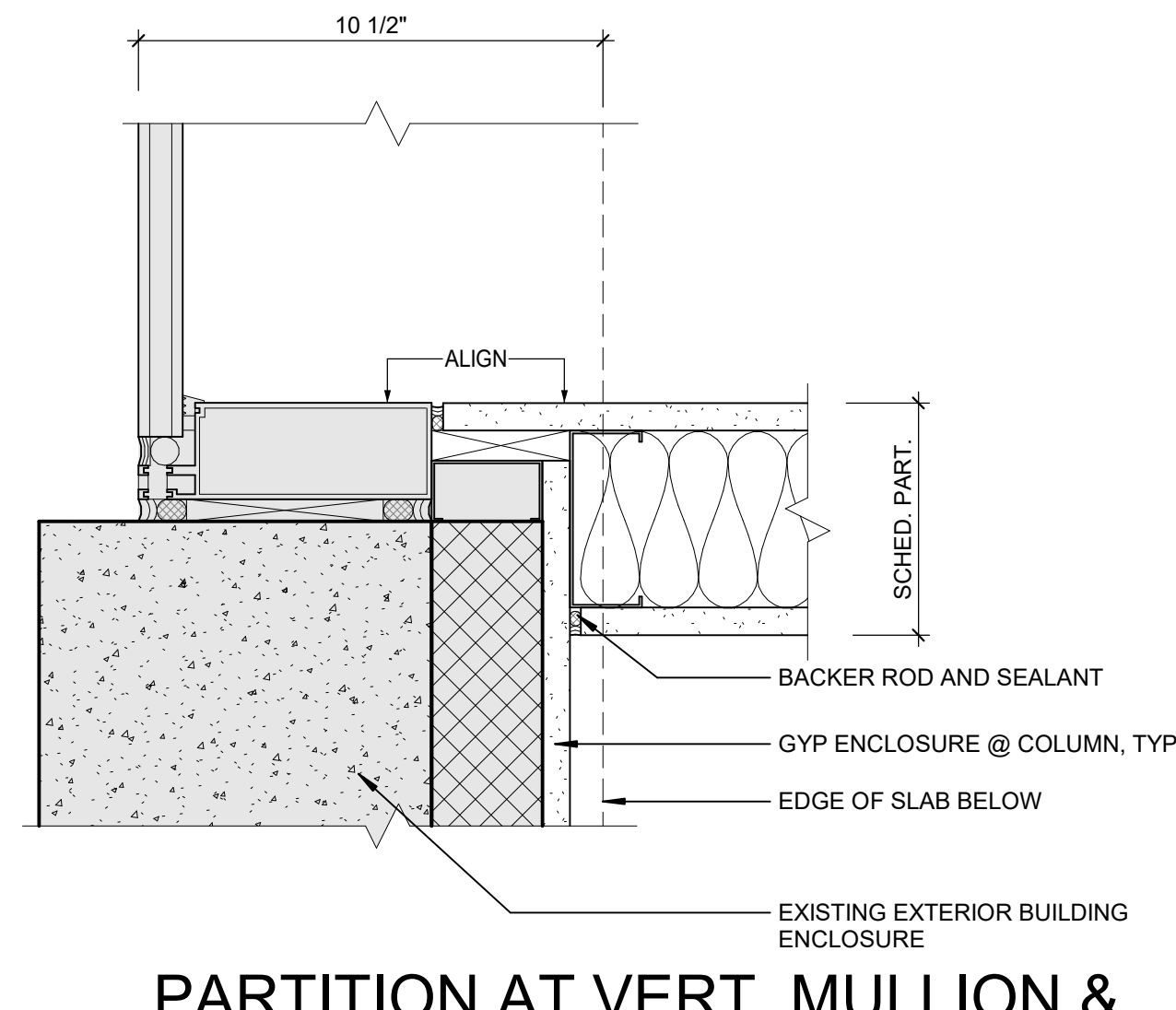


ISSUES	DATE
100% SCHEMATIC DESIGN	05/01/2020
50% DESIGN DEVELOPMENT	06/29/2020
ISSUE FOR DESIGN DEVELOPMENT	08/07/2020
ISSUE FOR HD PERMIT	08/07/2020
ISSUE FOR PERMIT	08/07/2020
50% CONSTRUCTION DOCUMENTS	10/02/2020
ISSUE FOR CONSTRUCTION	11/20/2020

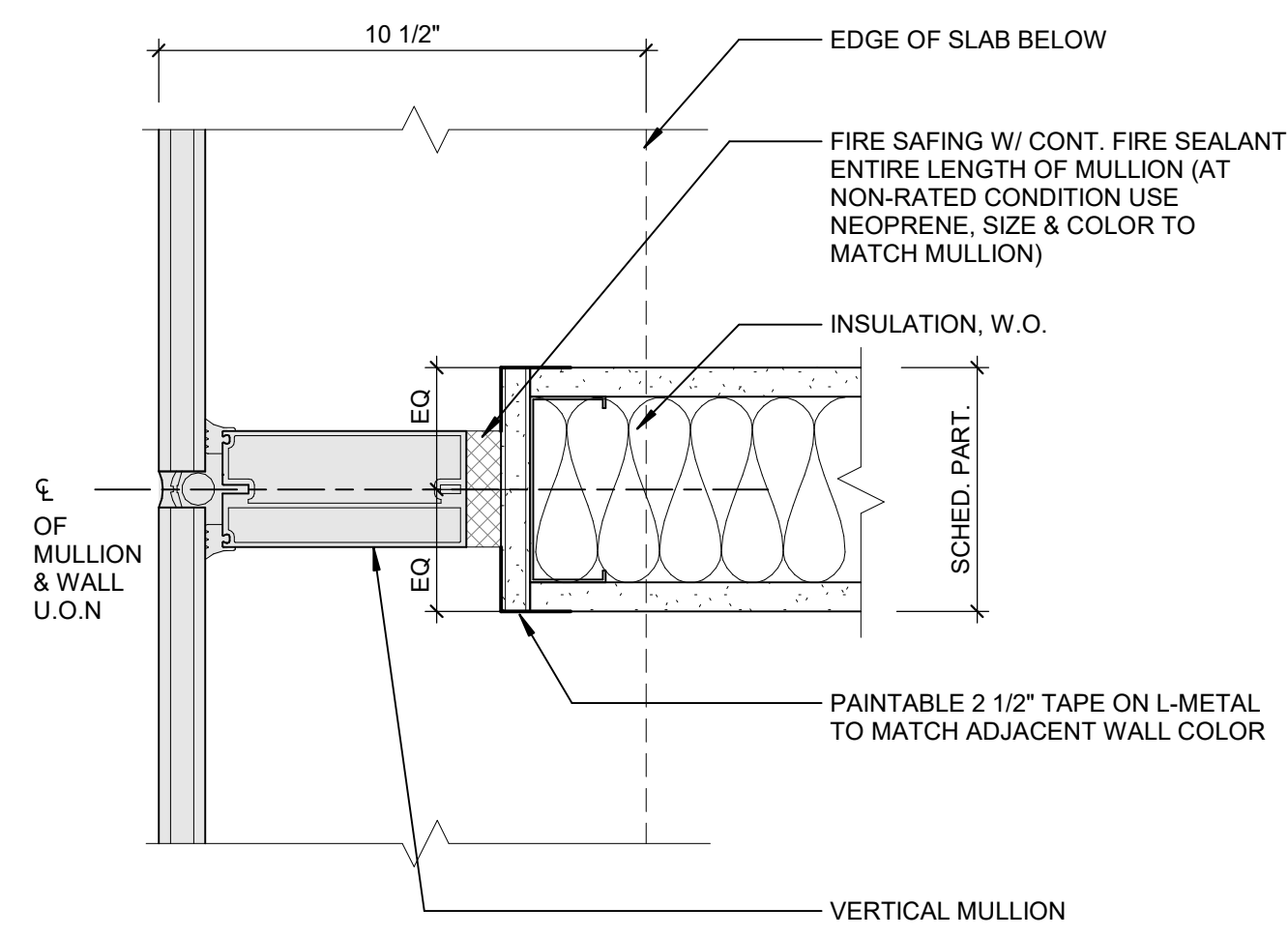
REVISION LIST	DATE
B ISSUE FOR PERMIT BACKCHECK 2	12/10/2020



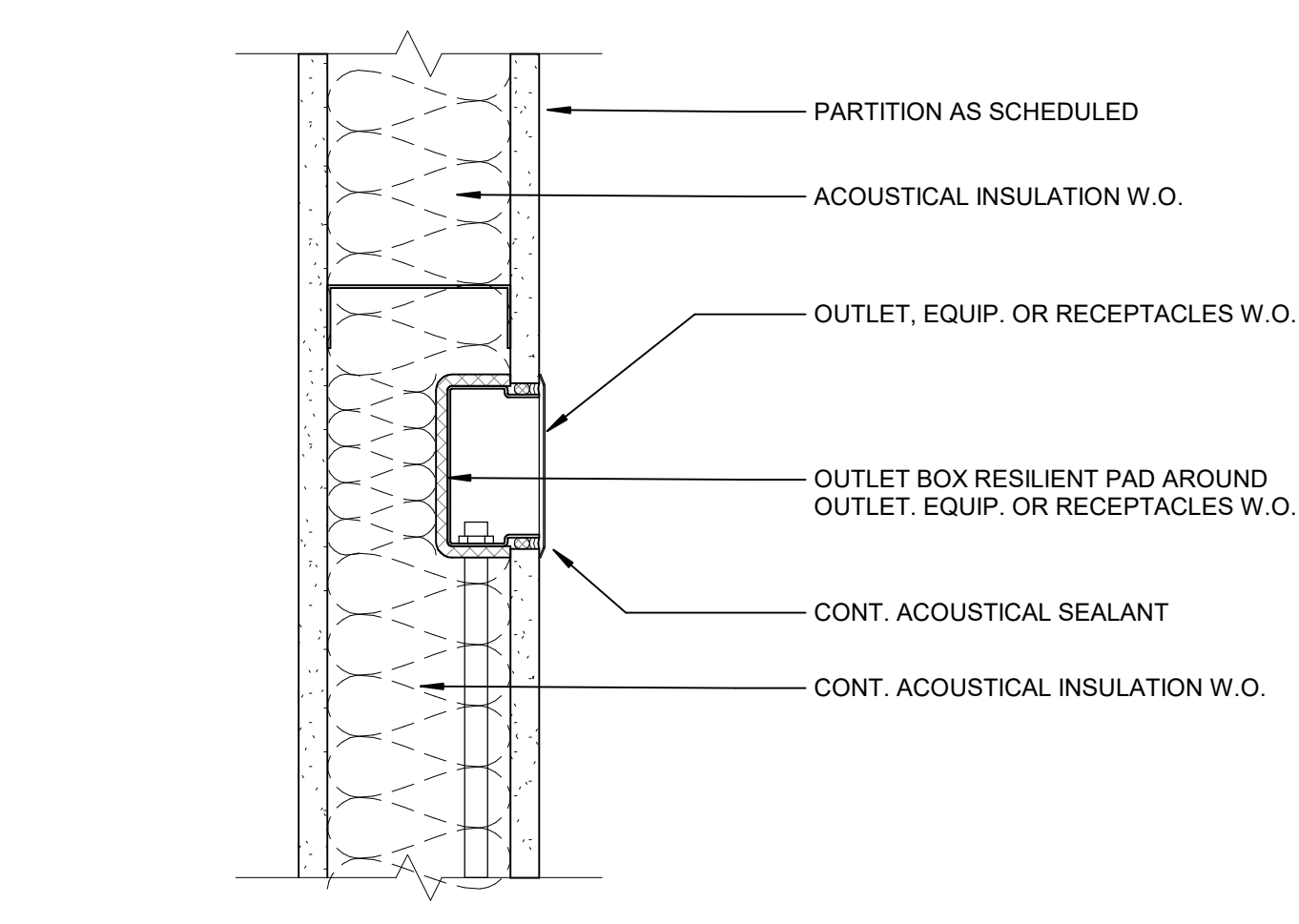
17 TYP. WALL OFFSET @ (E) BEAM
3" = 1'-0"



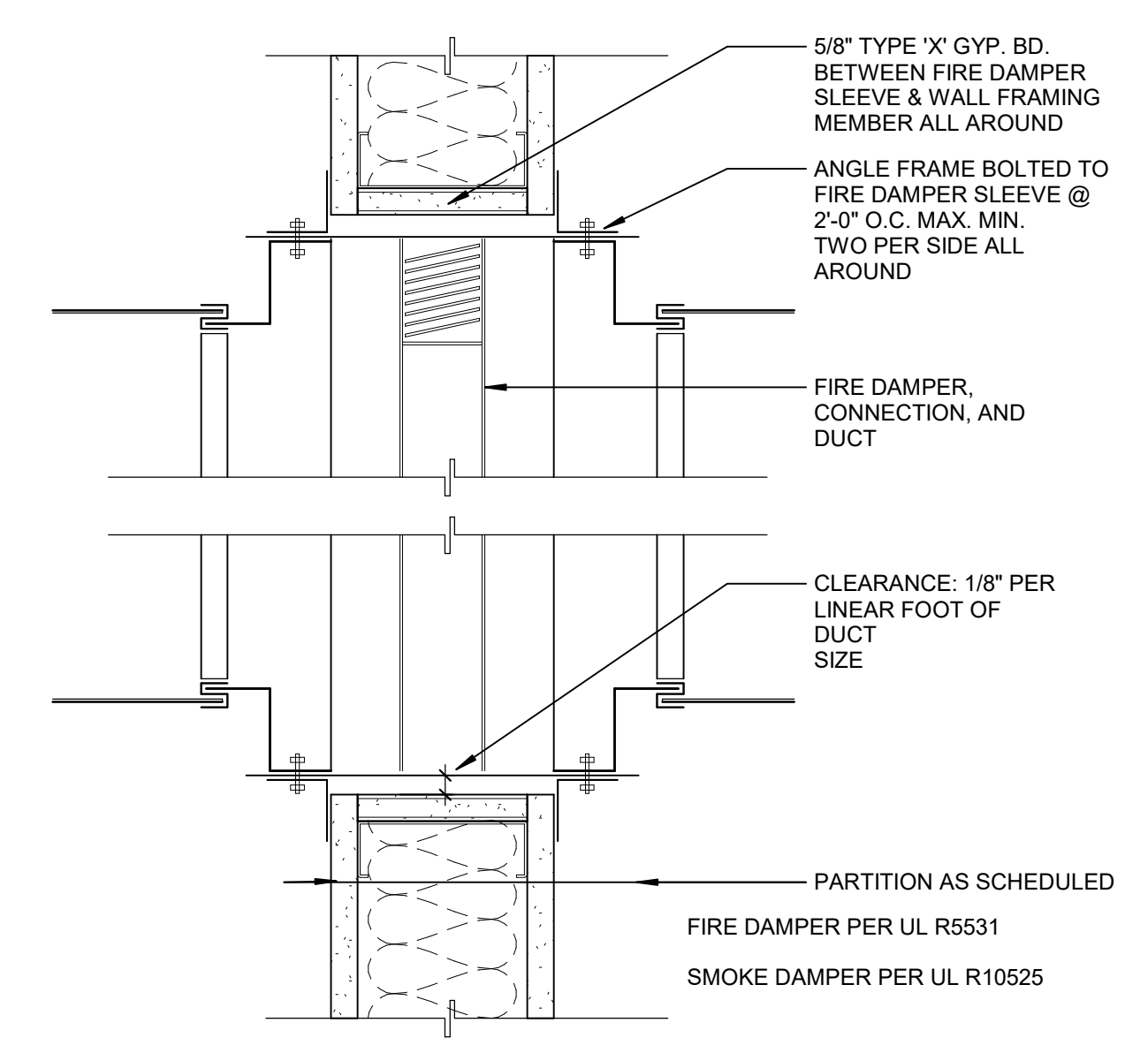
13 PARTITION AT VERT. MULLION & EXISTING COLUMN
3" = 1'-0"



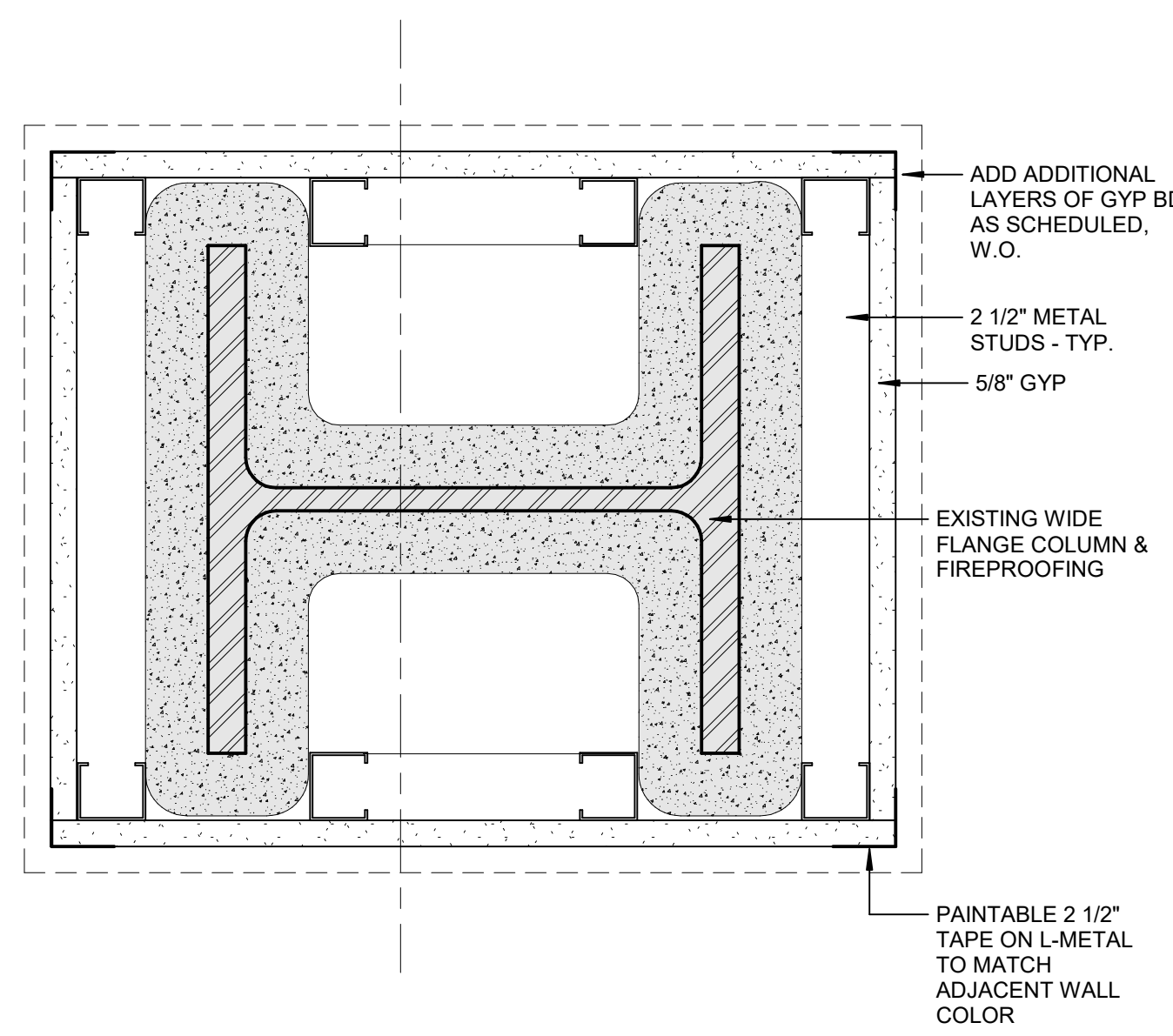
9 RATED PARTITION AT VERT. MULLION
3" = 1'-0"



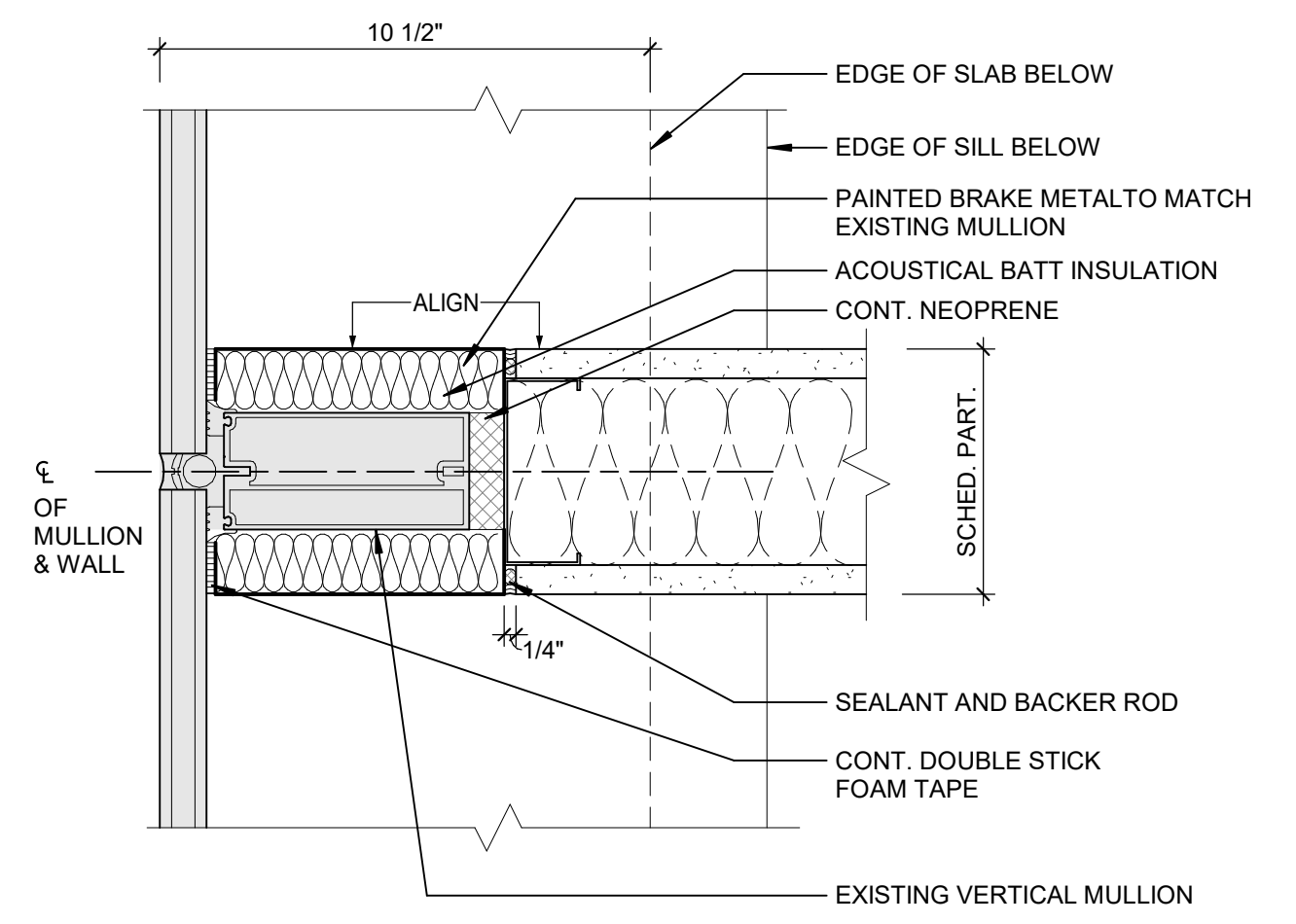
5 J-BOX PENETRATION
3" = 1'-0"



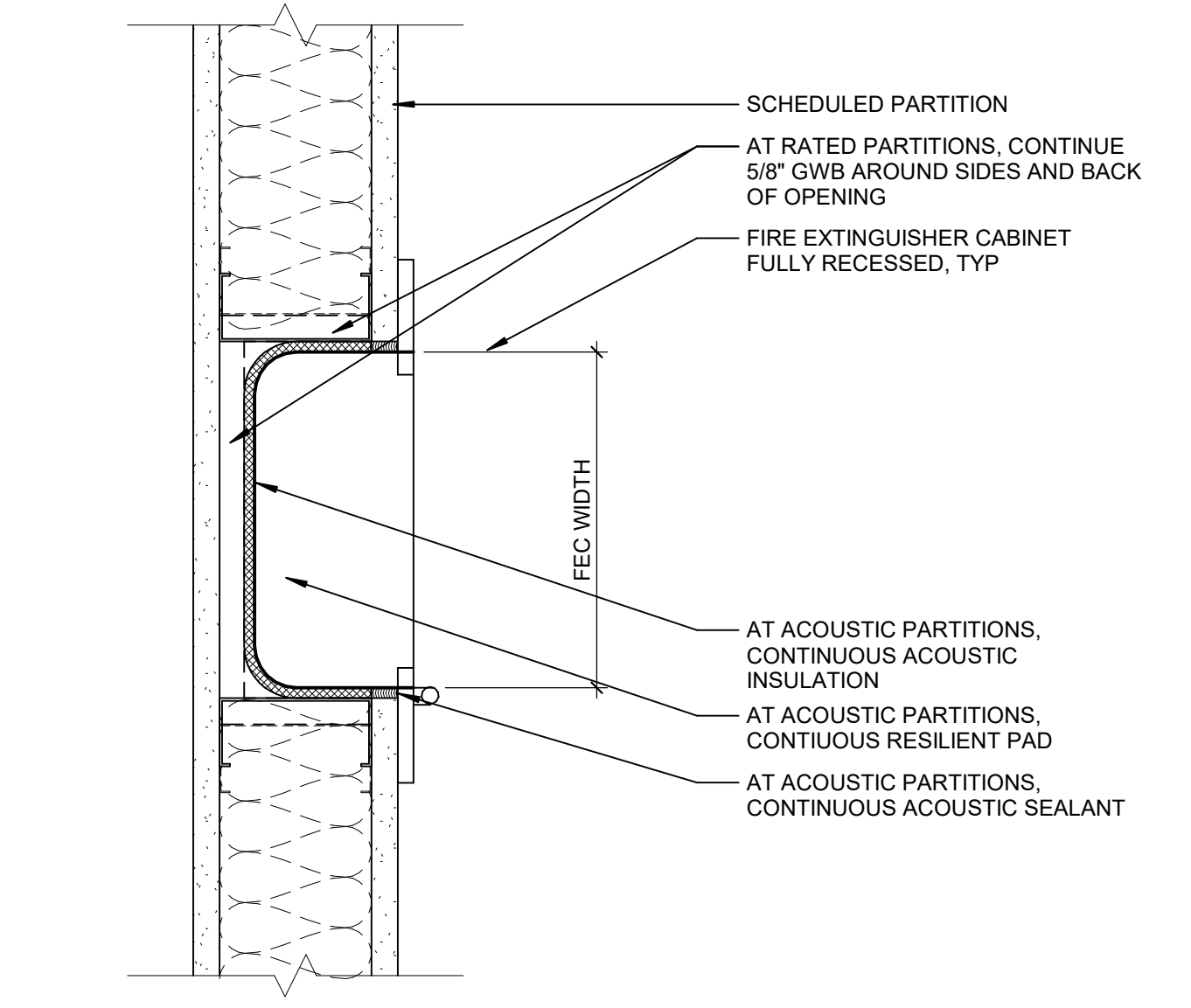
1 FIRE SMOKE DAMPER @ PART.
3" = 1'-0"



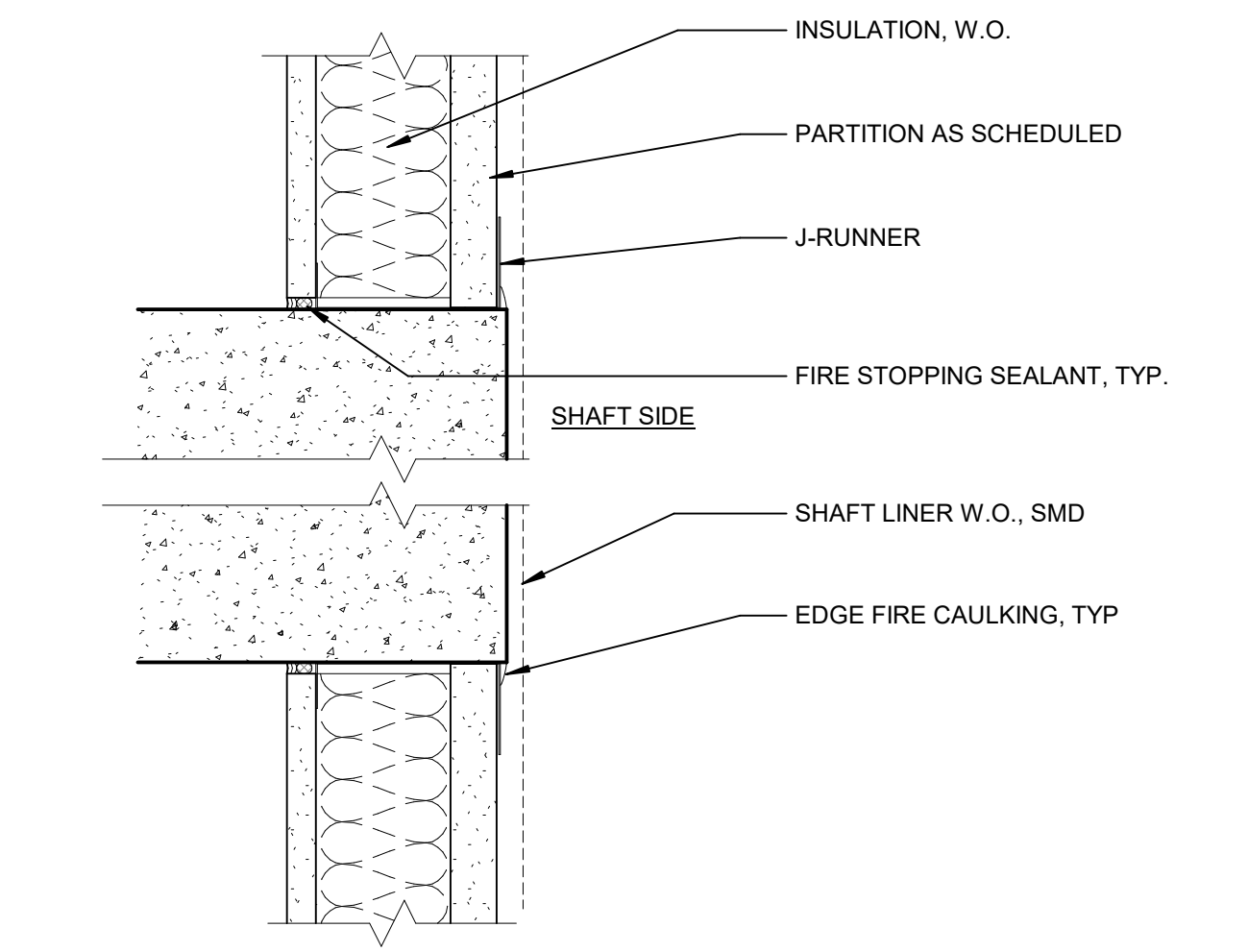
14 COLUMN ENCLOSURE, TYP.
3" = 1'-0"



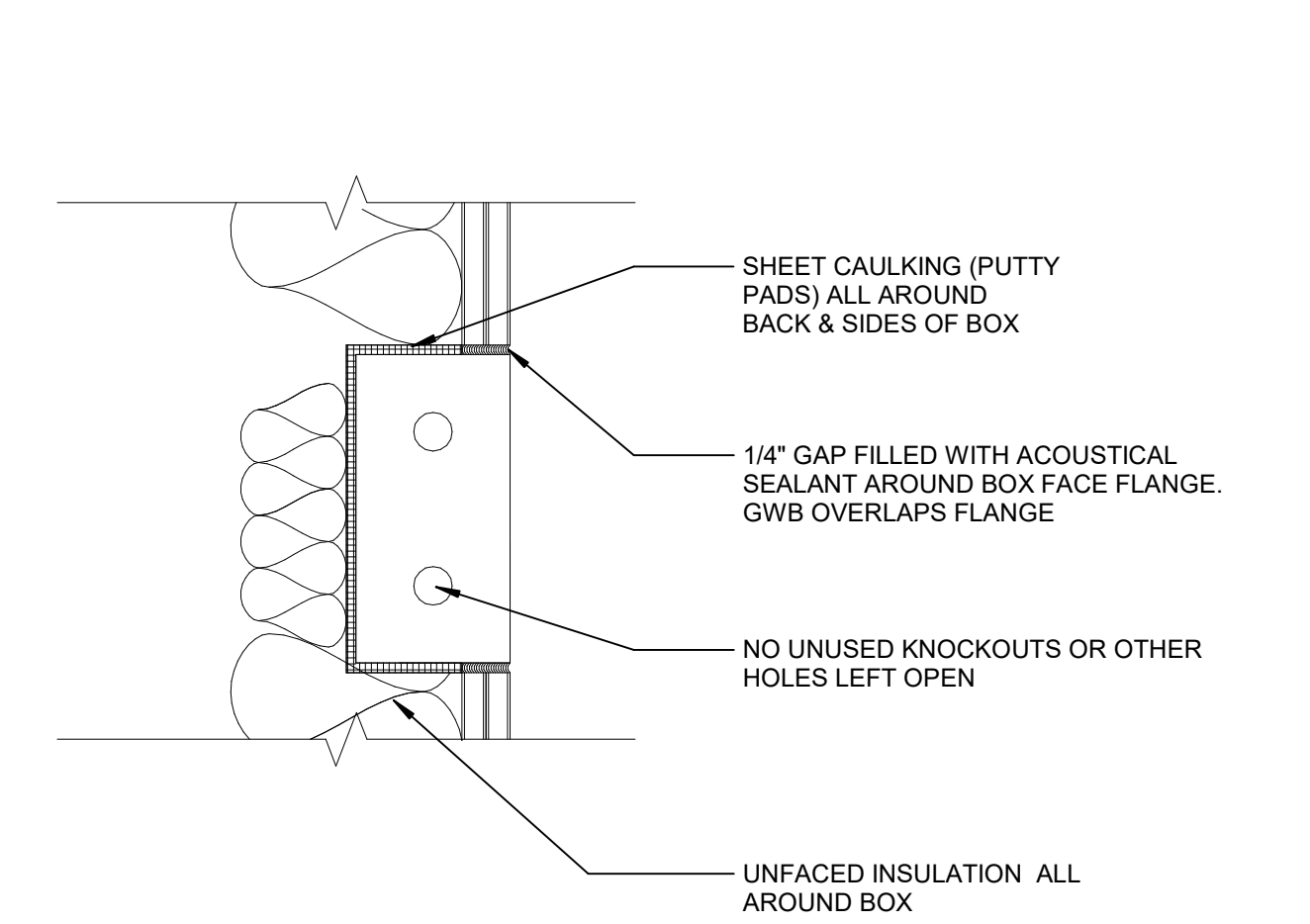
10 ACOUSTICAL PARTITION AT VERT. MULLION TYP.
3" = 1'-0"



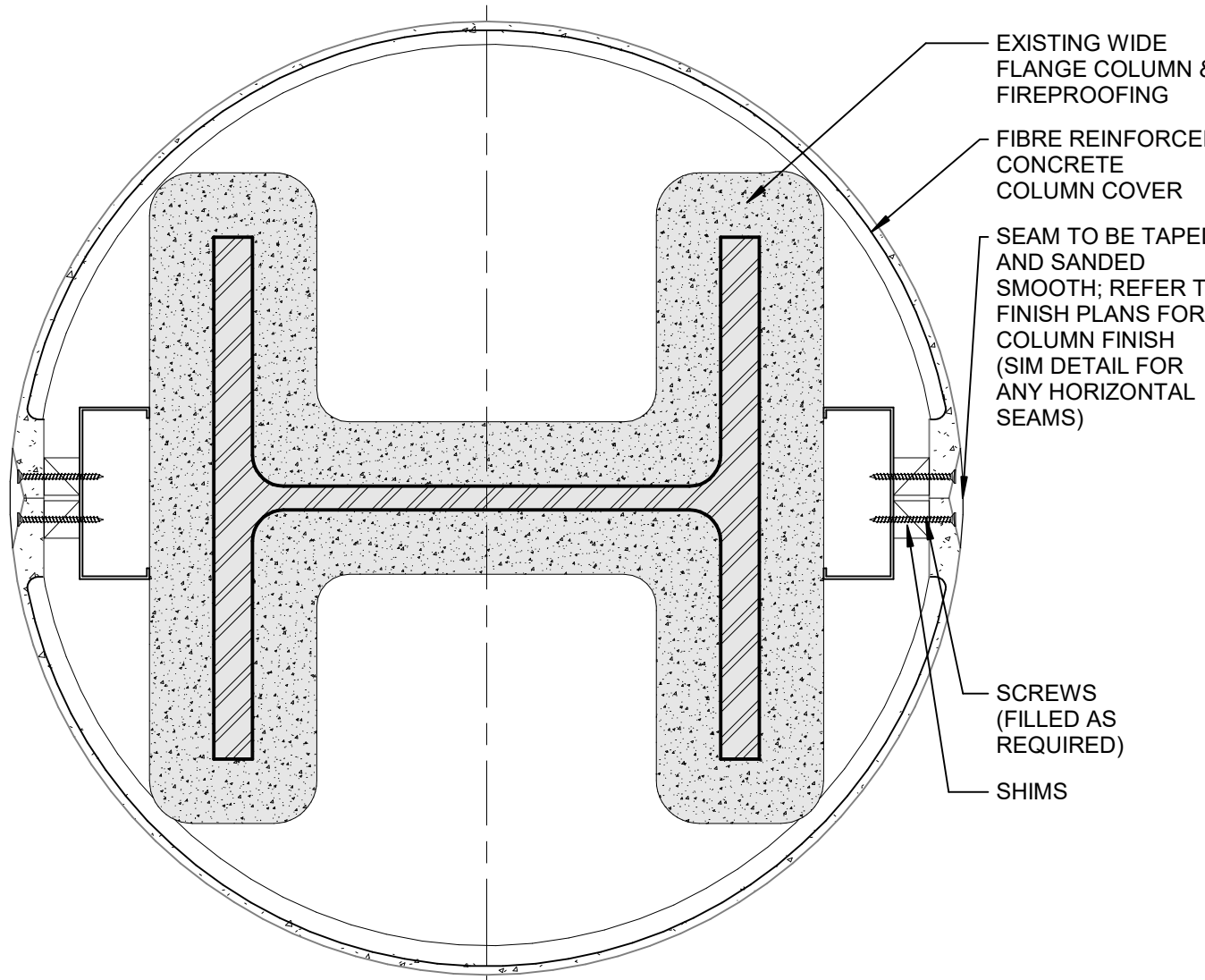
6 FIRE EXTINGUISHER CABINET
3" = 1'-0"



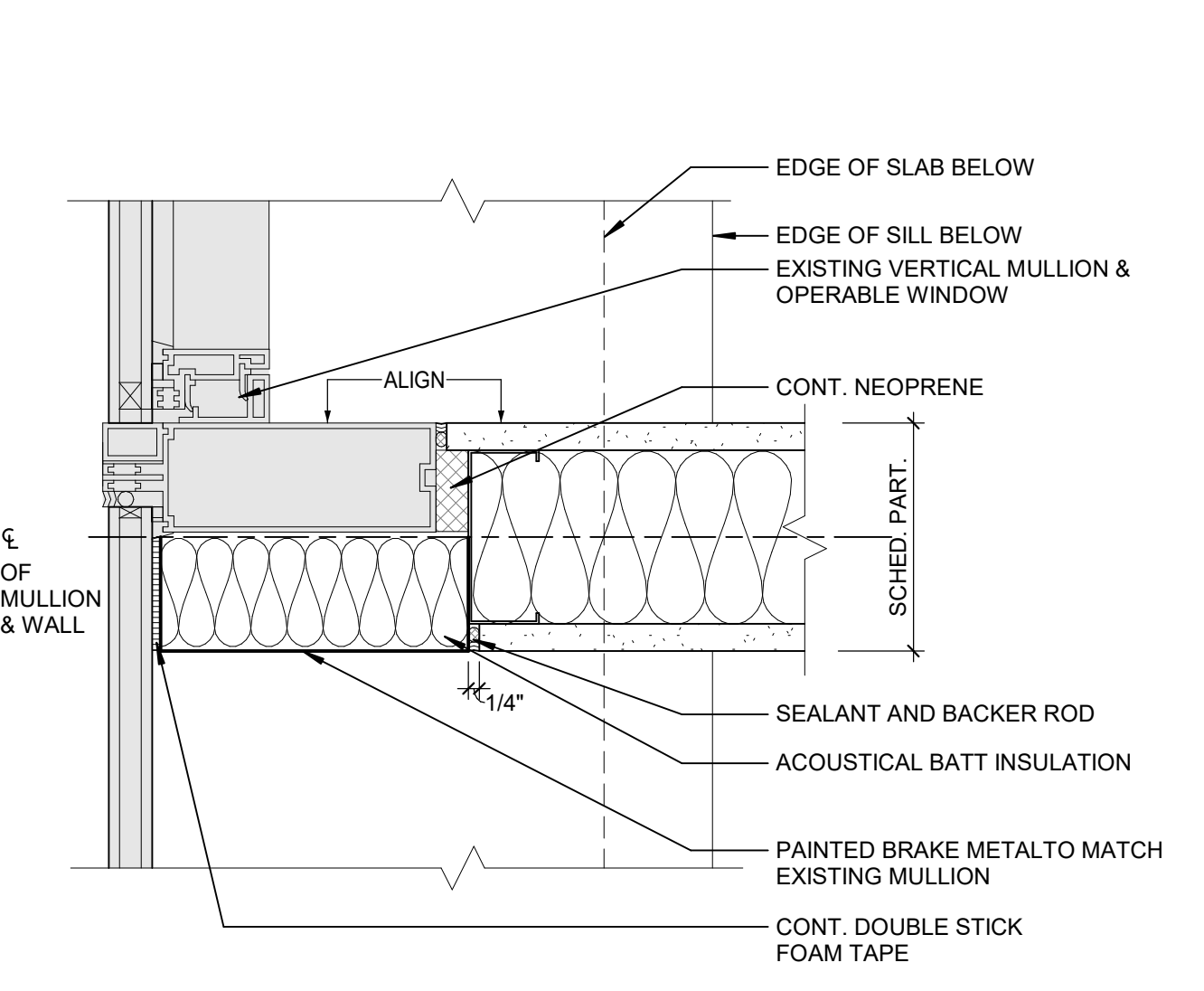
2 TYP. SHAFT ENCLOSURE
3" = 1'-0"



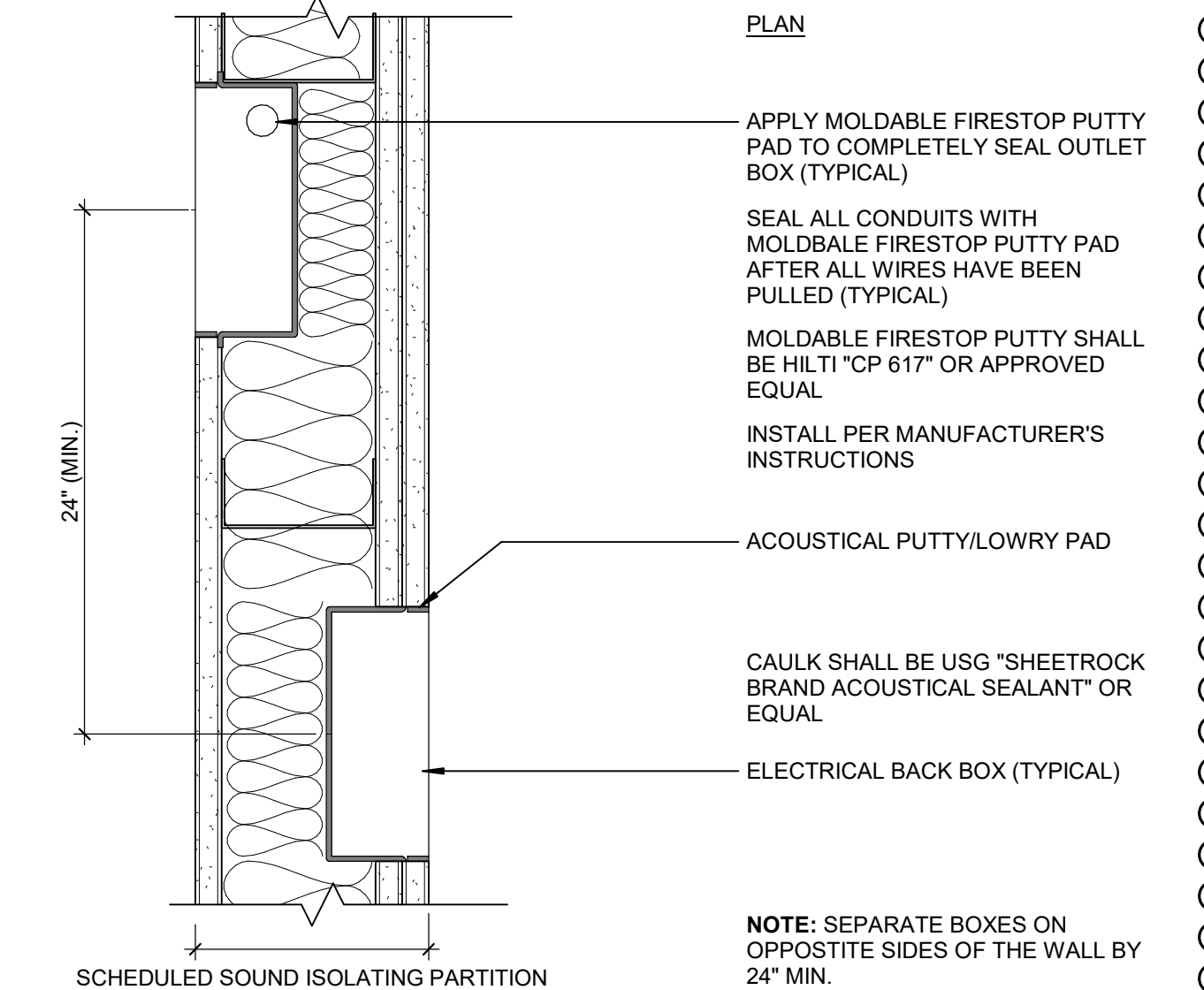
18 ACOUSTIC POWER / DATA J-BOX
12" = 1'-0"



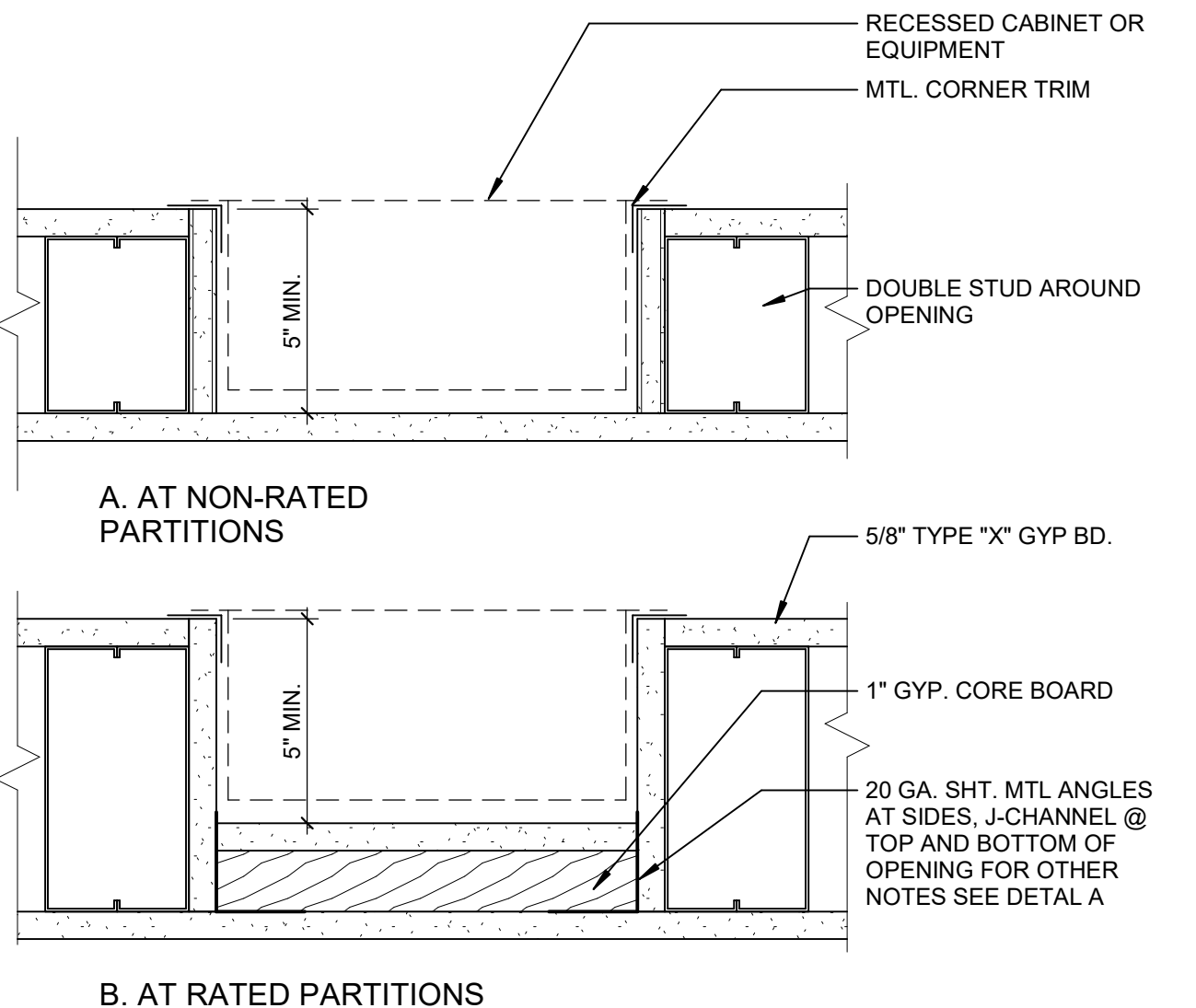
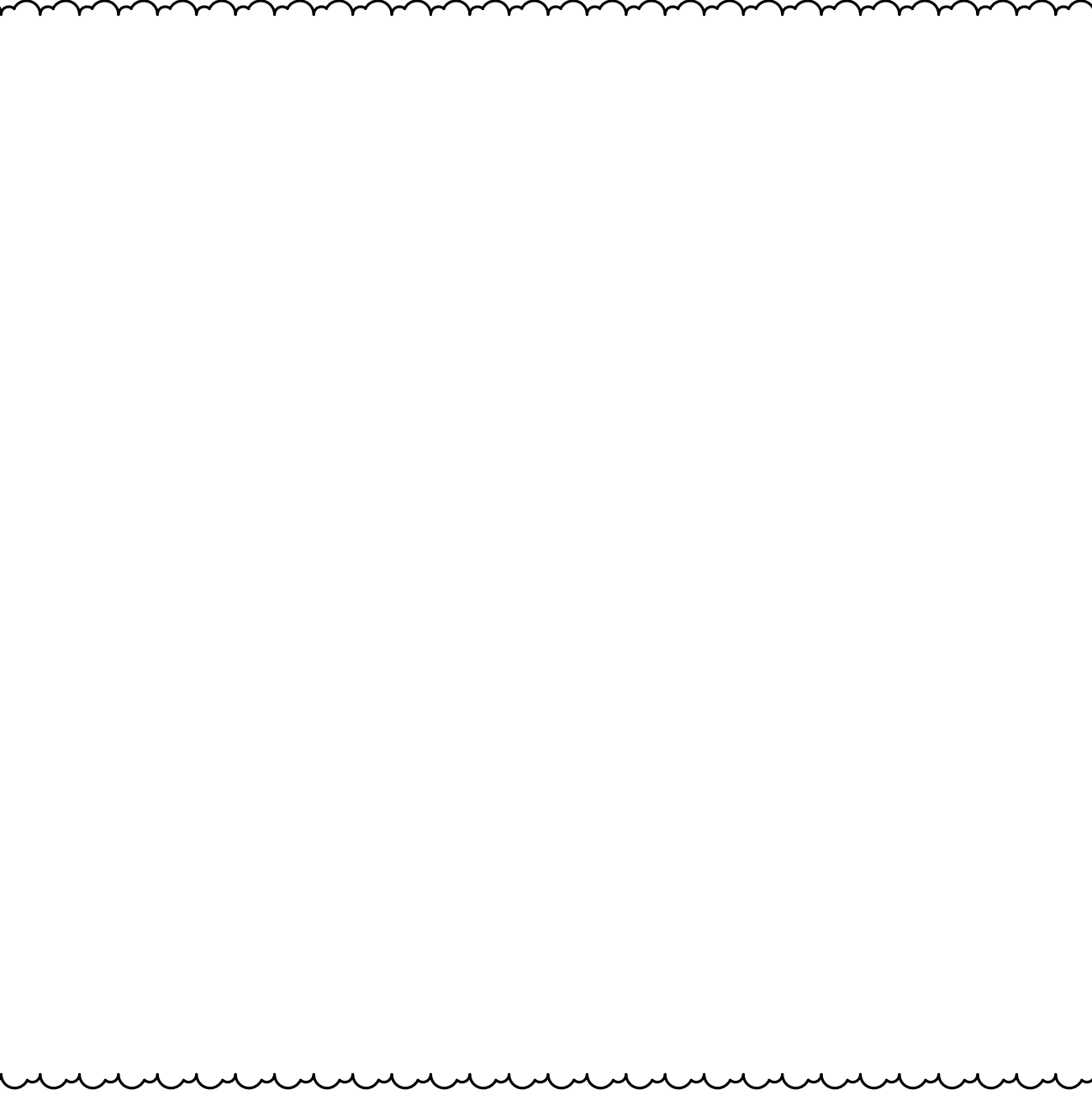
15 ROUND COLUMN ENCLOSURE
3" = 1'-0"



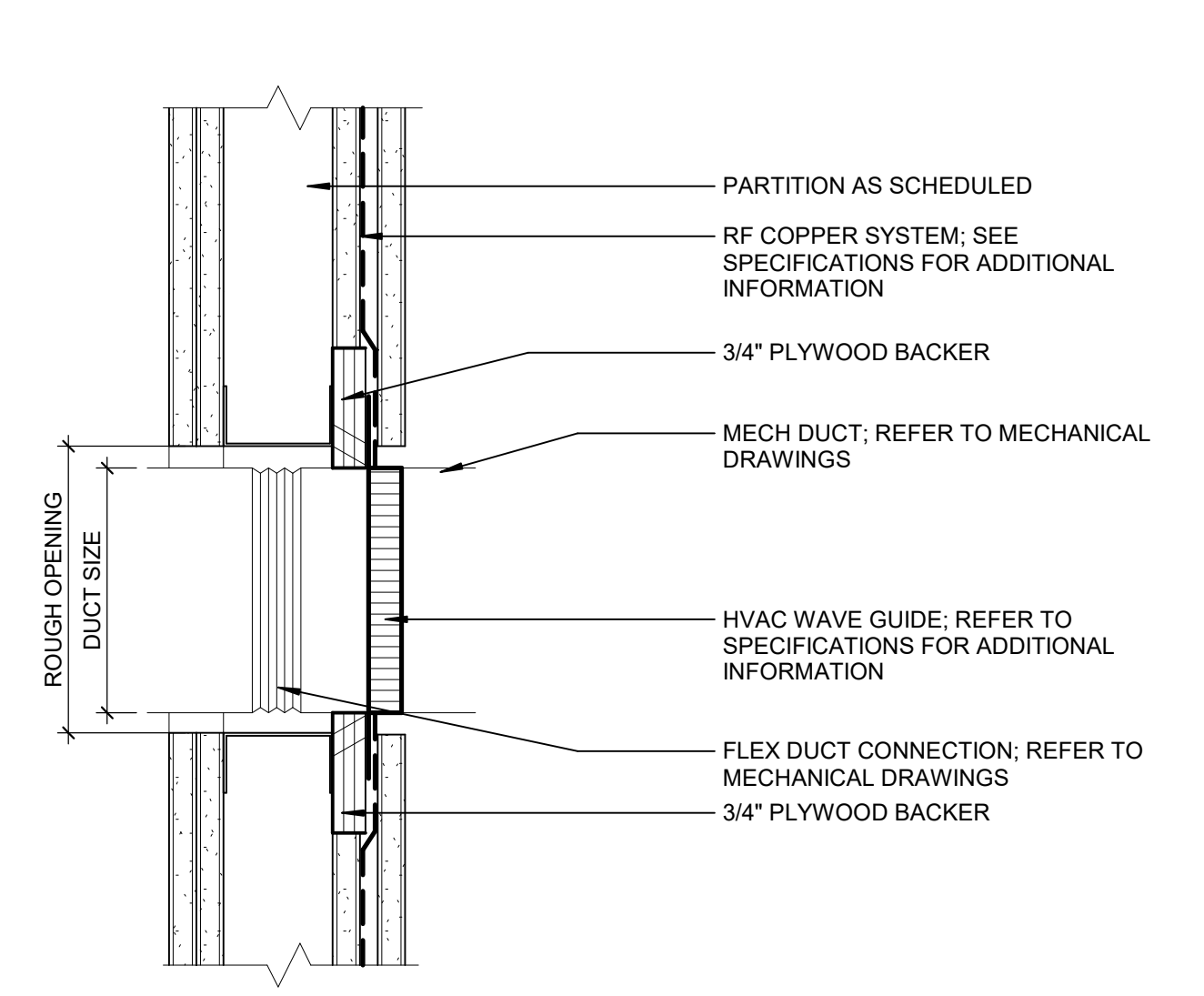
11 ACOUSTICAL PARTITION AT VERT. MULLION W/ OPERABLE WINDOW
3" = 1'-0"



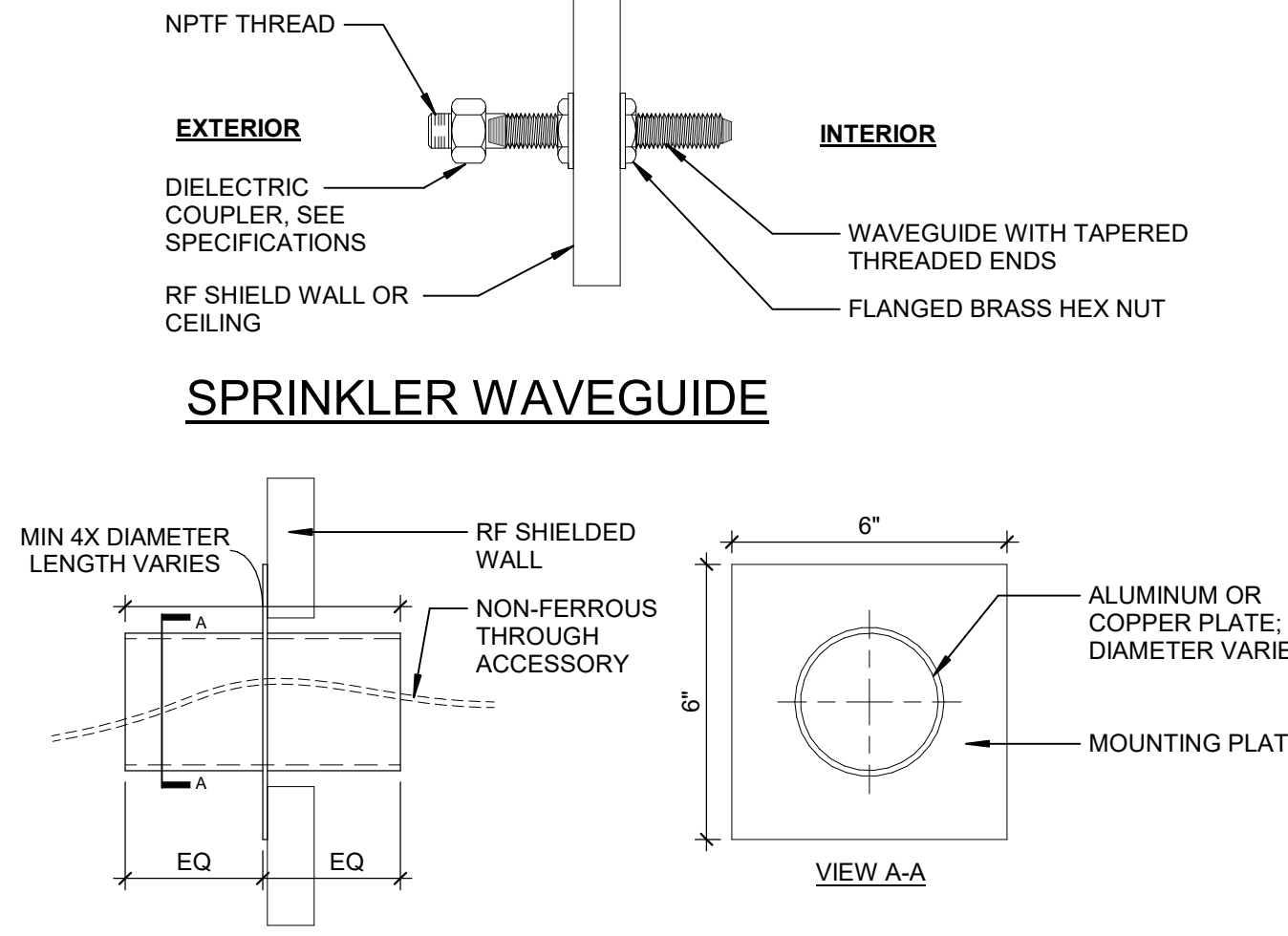
7 RECESSED BOXES IN ACOUSTICAL PARTITIONS
3" = 1'-0"



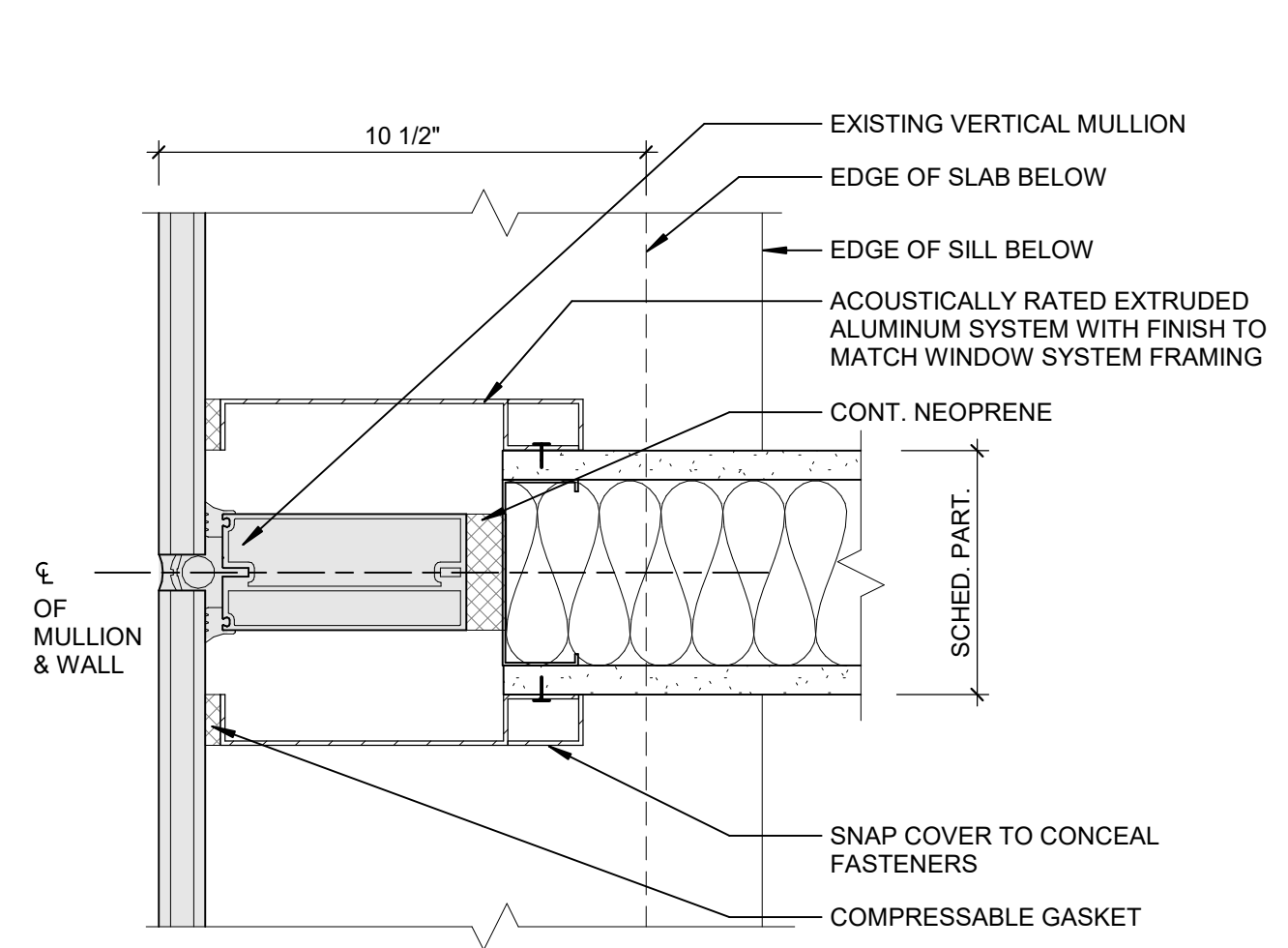
4 RECESSED ELEC. PANEL
3" = 1'-0"



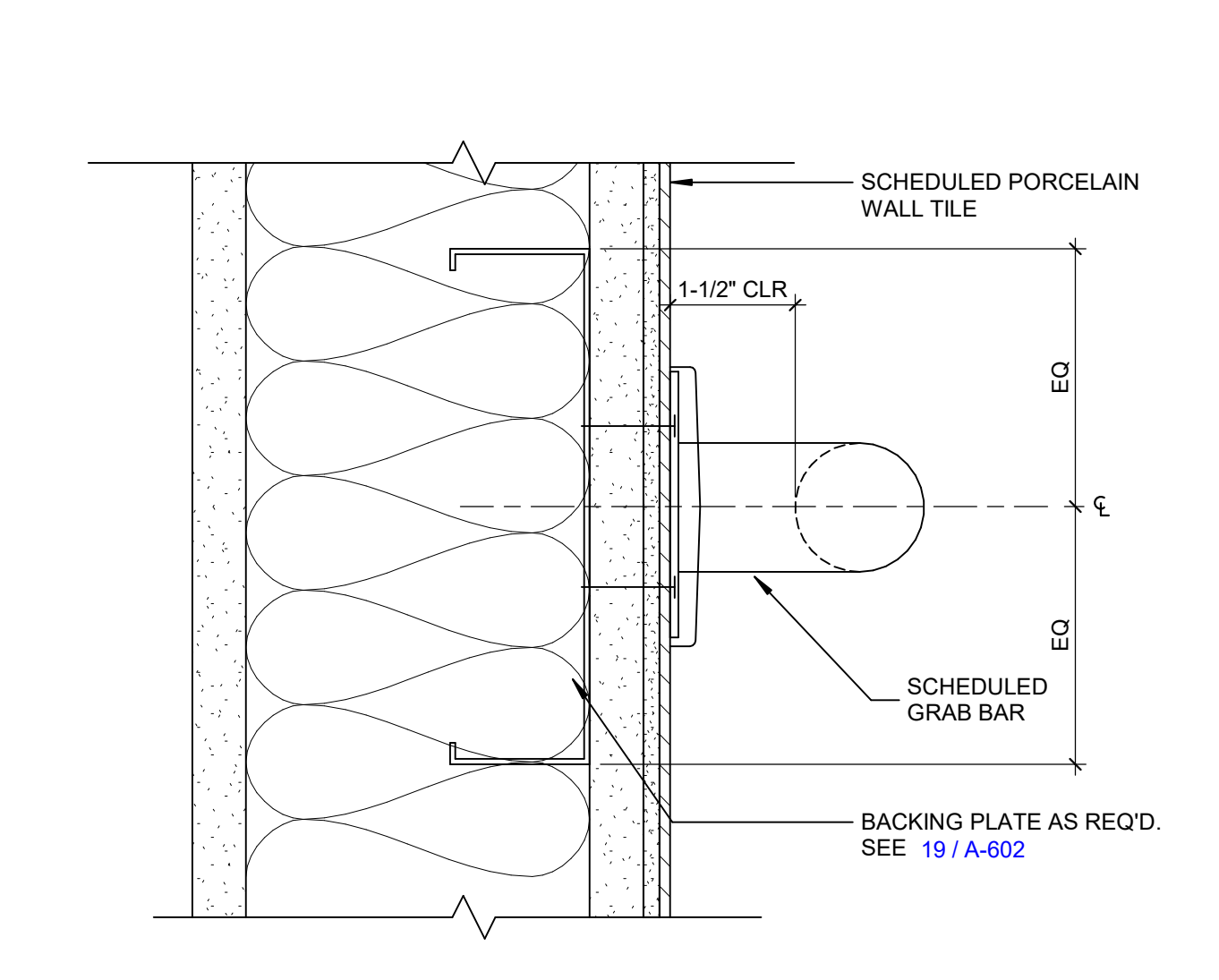
20 RF HVAC WAVEGUIDE
3" = 1'-0"



16 SPRINKLER / FEEDTHROUGH WAVE GUIDE
3" = 1'-0"



12 ACOUSTICAL PARTITION AT VERT. MULLION W/ ACOUSTIC RATED ALUMINUM
3" = 1'-0"



8 GRAB BAR ANCHORAGE
6" = 1'-0"

1001 TOWERS | SHARED
10550 NE 10TH STREET, BELLEVUE, WA 98004



PROJECT NO.: 19044.00
DATE: 12/10/2020
SCALE: As indicated

SHEET TITLE:
INTERIOR PARTITION DETAILS

SHEET NO.: **A-604**

12/16/2020 9:20:03 AM

All drawings and written material appearing herein constitute original and unpublished work of the Architect/Engineer and may not be duplicated, used or disclosed without consent of Architect/Engineer. If this drawing is not 30"x42", then the drawing has been revised from its original size. Notes scales must be adjusted. This line should be equal to one inch.