

UL/cUL SYSTEM NO. HW-D-0268

TOP OF WALL JOINT : CONCRETE WALL OR BLOCK WALL ASSEMBLY

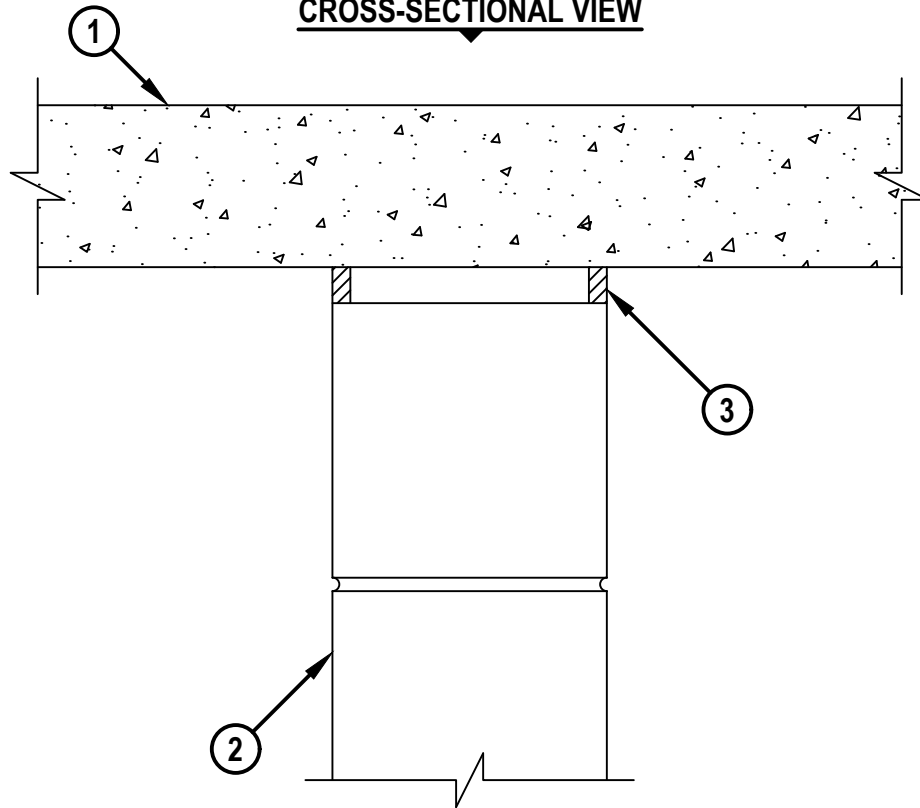
ASSEMBLY RATING = 2-HR. OR 3-HR.

CLASS II MOVEMENT CAPABILITIES - 12.5% COMPRESSION OR EXTENSION

L-RATING AT AMBIENT = LESS THAN 1 CFM / LIN FT

L-RATING AT 400°F = LESS THAN 1 CFM / LIN FT

CROSS-SECTIONAL VIEW



HWDD0268g.102720

1. CONCRETE FLOOR ASSEMBLY (2-HR. OR 3-HR. FIRE-RATING) :
 - A. LIGHTWEIGHT OR NORMAL WEIGHT CONCRETE FLOOR ASSEMBLY (MINIMUM 2-1/2" THICK).
WHEN WALL THICKNESS IS 4-1/2", MINIMUM THICKNESS OF FLOOR SHALL BE 4-1/2".
 - B. ANY UL/cUL CLASSIFIED PRECAST HOLLOW CORE FLOOR ASSEMBLY (MINIMUM 6" THICK).
2. CONCRETE WALL ASSEMBLY (2-HR. OR 3-HR. FIRE-RATING) :
 - A. LIGHTWEIGHT OR NORMAL WEIGHT CONCRETE WALL (MIN. 4-1/2" THICK) (2-HR FIRE-RATING ONLY).
 - B. LIGHTWEIGHT OR NORMAL WEIGHT CONCRETE WALL (MIN. 8" THICK) (3-HR. FIRE-RATING ONLY).
 - C. ANY UL/cUL CLASSIFIED CONCRETE BLOCK WALL.
3. HILTI CP 606 FLEXIBLE FIRESTOP SEALANT :
 - A. MINIMUM 1/4" DEPTH OF SEALANT FOR A 2-HR. FIRE-RATING.
 - B. MINIMUM 1/2" DEPTH OF SEALANT FOR A 3-HR. FIRE-RATING.

NOTES : 1. MAXIMUM WIDTH OF JOINT = 1".
2. [OPTIONAL] [NOT SHOWN] MINERAL WOOL OR POLYURETHANE FOAM BACKER ROD MAY BE USED AS A BACKER FOR FIRESTOP SEALANT.



HILTI, Inc.
Plano, Texas USA (800) 879-8000

| | |
|-------|---------------|
| Sheet | 1 of 1 |
| Scale | 3/16" = 1" |
| Date | Oct. 27, 2020 |

Drawing No.
**HWD
0268g**