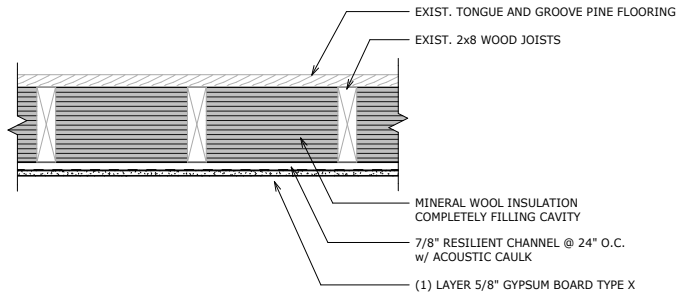


21006 - Vade Mecum Hotel_Rated Floor/Ceiling Assembly



CALCULATED FIRE RATING PER SECTION 722.6

ASSEMBLY ITEM	TOTAL RATING
MINERAL WOOL INSULATION (R-30 = 7.25")	15 MINS.
2x8 JOISTS @ 16" O.C.	10 MINS.
(1) LAYER 5/8" TYPE X GYPSUM WALLBOARD	40 MINS.
TOTAL RATING	65 MINS.

02 RATED FLOOR/CEILING ASSEMBLY
 6006.2 1 1/2" = 1'-0"

FIRE RESISTANCE RATING: 1 HR.

