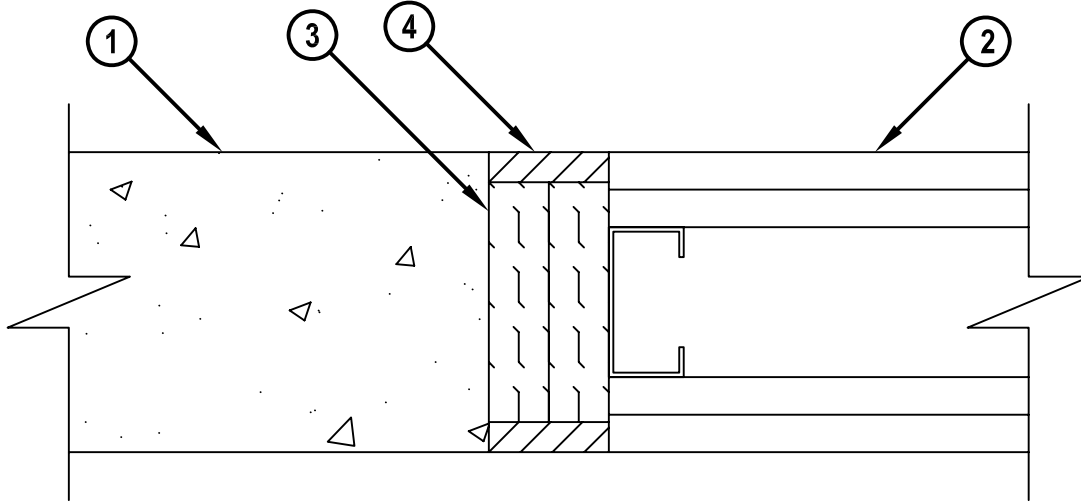


**WALL TO WALL JOINT : GYPSUM WALL ASSEMBLY TO CONCRETE WALL OR  
CONCRETE BLOCK WALL ASSEMBLY**

ASSEMBLY RATING = 1-HR. OR 2-HR.  
CLASS II MOVEMENT CAPABILITIES - 12.5% COMPRESSION OR EXTENSION

**TOP VIEW**



WWD0068a.030807

1. CONCRETE WALL ASSEMBLY (1-HR. OR 2-HR. FIRE-RATING) :
  - A. LIGHTWEIGHT OR NORMAL WEIGHT CONCRETE WALL (MINIMUM 3-3/4" THICK) (1-HR. FIRE-RATING).
  - B. LIGHTWEIGHT OR NORMAL WEIGHT CONCRETE WALL (MINIMUM 5" THICK) (2-HR. FIRE-RATING).
  - C. ANY UL/cUL CLASSIFIED CONCRETE BLOCK WALL.
2. NON-BEARING GYPSUM WALL ASSEMBLY (UL/cUL CLASSIFIED U400 OR V400 SERIES) (1-HR. OR 2-HR. FIRE-RATING) (2-HR. SHOWN) TO INCLUDE THE FOLLOWING CONSTRUCTION FEATURES :
  - A. STEEL STUDS TO BE MINIMUM 3-1/2" WIDE (SPACED MAXIMUM 24" OC).
  - B. NOMINAL 5/8" THICK GYPSUM WALLBOARD. TYPE, NUMBER OF LAYERS, AND SHEET ORIENTATION AS SPECIFIED IN THE INDIVIDUAL UL DESIGN.
3. MINERAL WOOL (MIN. 4 PCF DENSITY) COMPRESSED 50% AND RECESSED FROM BOTH SURFACES OF WALL TO ACCOMMODATE FIRESTOP SEALANT (MINIMUM 2-3/4" THICKNESS FOR 1-HR., MINIMUM 4" THICKNESS FOR 2-HR.).
4. MINIMUM 1/2" DEPTH HILTI CP 606 FLEXIBLE FIRESTOP SEALANT.

**NOTE : MAXIMUM WIDTH OF JOINT = 2".**



HILTI, Inc.  
Tulsa, Oklahoma USA (800) 879-8000

Sheet	1 of 1
Scale	5/16" = 1"
Date	Mar. 08, 2007

Drawing No.  
**WWD  
0068a**