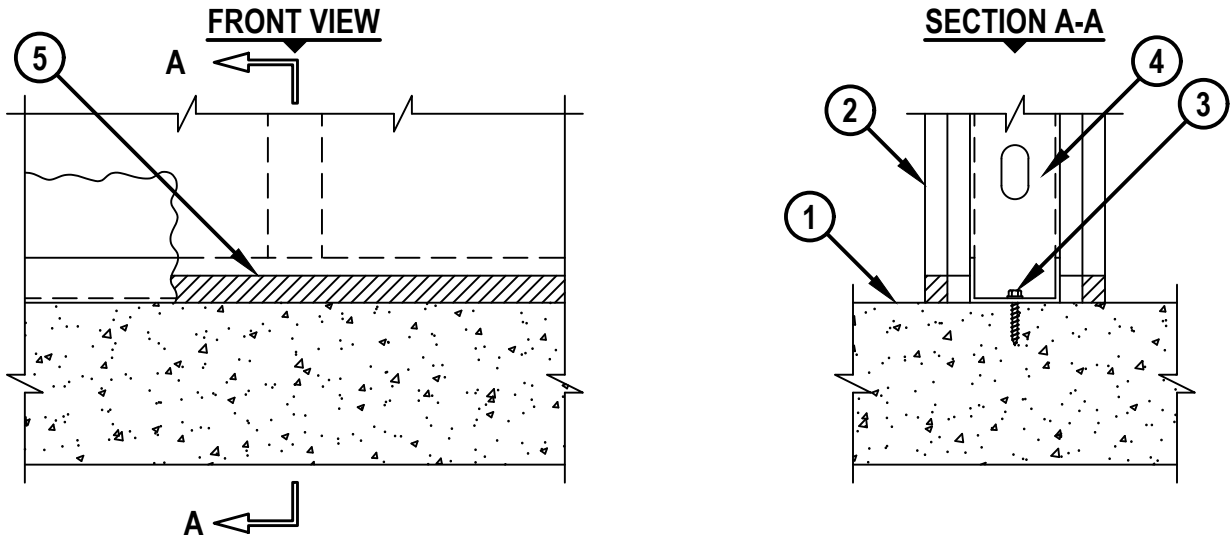


BOTTOM OF WALL JOINT : GYPSUM WALL ASSEMBLY

ASSEMBLY RATING = 1-HR., 2-HR., 3-HR., OR 4-HR. (SEE ITEMS 1, 2, AND 5)

L-RATING AT AMBIENT = LESS THAN 1 CFM / LIN FT

L-RATING AT 400°F = LESS THAN 1 CFM / LIN FT



BWS0002h.102422

1. CONCRETE FLOOR ASSEMBLY :

- A. LIGHTWEIGHT OR NORMAL WEIGHT CONCRETE FLOOR (MINIMUM 4-1/2" THICK).
- B. ANY UL/cUL CLASSIFIED PRECAST (HOLLOW-CORE) CONCRETE FLOOR (MINIMUM 6" THICK).
- C. FOR 1-HR. AND 2-HR. RATINGS ONLY: STEEL FLOOR UNIT/FLOOR ASSEMBLY (UL/cUL D700 OR D900 SERIES) - LIGHTWEIGHT OR NORMAL WEIGHT CONCRETE FLOOR (MINIMUM 2-1/2" THICK) OVER METAL DECKING.

2. GYPSUM WALL ASSEMBLY (UL/cUL CLASSIFIED U400 SERIES WALL) (1-HR., 2-HR., 3-HR., OR 4-HR. FIRE-RATING) (2-HR. SHOWN). HOURLY RATING OF THE JOINT SYSTEM IS EQUAL TO THE HOURLY RATING OF THE WALLS.

3. FLOOR RUNNER (MIN. 25 GA., 1-1/4" FLANGES) FASTENED TO TOP SURFACE OF CONCRETE FLOOR.

4. STEEL STUDS (MIN. 3-1/2" WIDE), NESTING IN AND RESTING ON FLOOR RUNNER.

5. HILTI CP 601S ELASTOMERIC FIRESTOP SEALANT, HILTI CP 606 FLEXIBLE FIRESTOP SEALANT, HILTI FS-ONE MAX INTUMESCENT FIRESTOP SEALANT, HILTI CFS-S SIL GG FIRESTOP SILICONE SEALANT, OR HILTI CP 605 BOTTOM OF WALL FIRESTOP SEALANT :

- A. MINIMUM 5/8" DEPTH OF SEALANT FOR 1-HR. AND 2-HR. FIRE-RATING.
- B. MINIMUM 1/4" DEPTH OF SEALANT FOR 1-HR. AND 2-HR. FIRE-RATING WHEN FORMING MATERIAL DESCRIBED IN NOTE NO. 2 IS USED.
- C. MINIMUM 1" DEPTH OF SEALANT FOR 3-HR. AND 4-HR. FIRE-RATING.

NOTES : 1. ALLOWABLE JOINT WIDTHS TO BE DETERMINED AS FOLLOWS :

- A. FOR 1-HR. OR 2-HR. WALLS, MAXIMUM WIDTH OF JOINT = 1".
- B. FOR 3-HR. OR 4-HR. WALLS, MAXIMUM WIDTH OF JOINT = 7/8".

2. [OPTIONAL, NOT SHOWN] MINERAL WOOL, FIBERGLASS, OR POLYURETHANE/POLYETHYLENE FOAM BACKER ROD MAY BE USED AS A BACKER IN 2-HR., 3-HR., OR 4-HR. WALLS OR IN 1-HR. WALLS WHEN ITEM 5B IS INSTALLED.



HILTI, Inc.
Plano, Texas USA (800) 879-8000

Sheet	1 of 1
Scale	3/16" = 1"
Date	Oct. 24, 2022

Drawing No.

**BWS
0002h**