

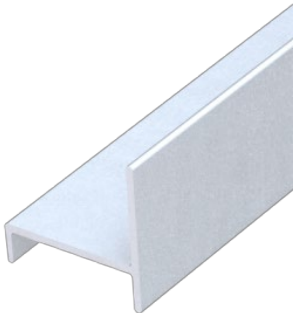


HEAVY STONE PROFILE

System description



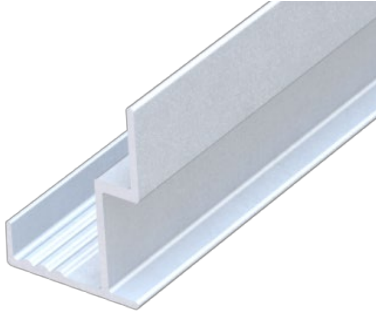
Heavy Stone Profile



MFT-SPT 38 6m



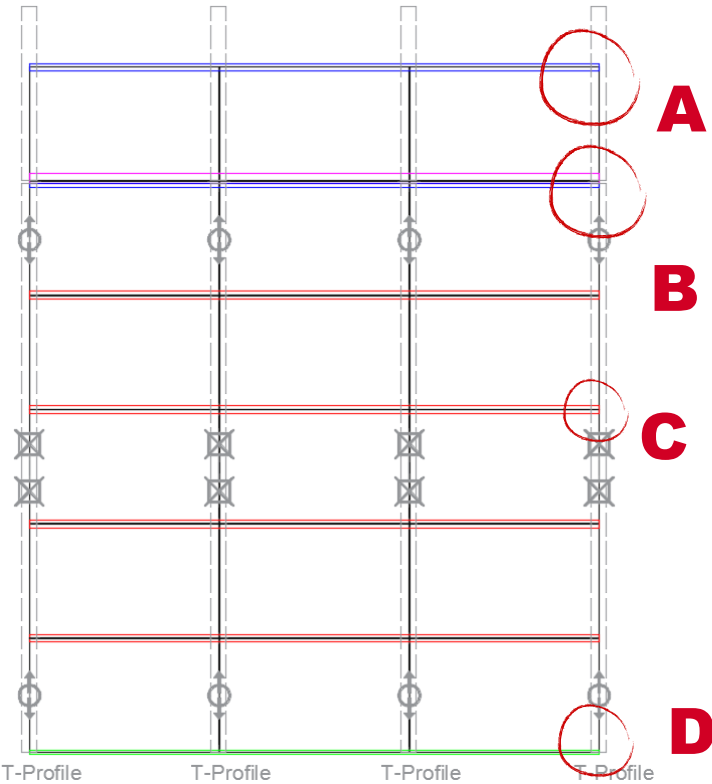
MFT-SPB 38 6m



MFT-SPJ 38 6m

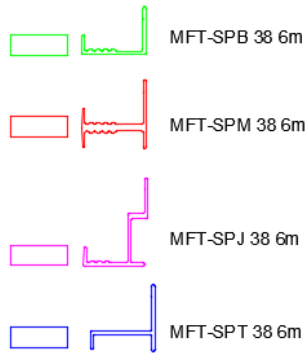


MFT-SPM 38 6m

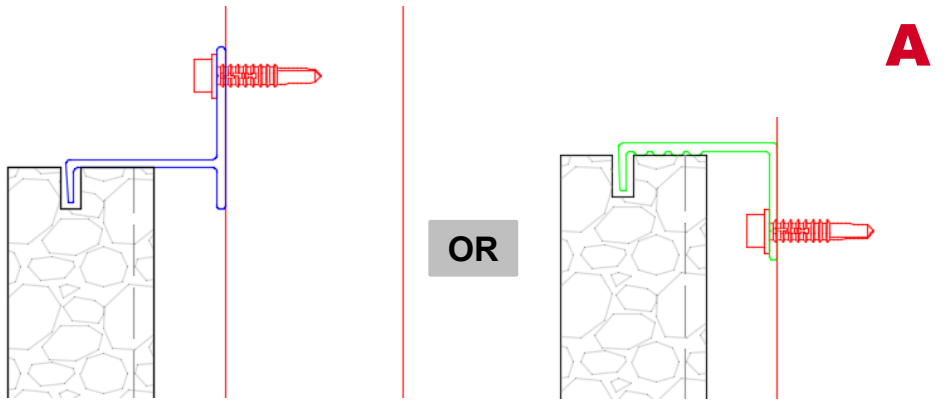


MFT-FOX VT EXPLANATION/LEGENDE:

-  MFT-FOX VT 185 M 11 (flexible point/Gleitpunkt)
fastening in elongated holes/Verschraubung in Langlöchern
-  MFT-FOX VT 185 double/Doppel M 11 (fix point/Fixpunkt)
fastening in round holes/Verschraubung in Rundlöchern
-  Profile/ Profil MFT-T 60x100 2,0 vertical/vertikal

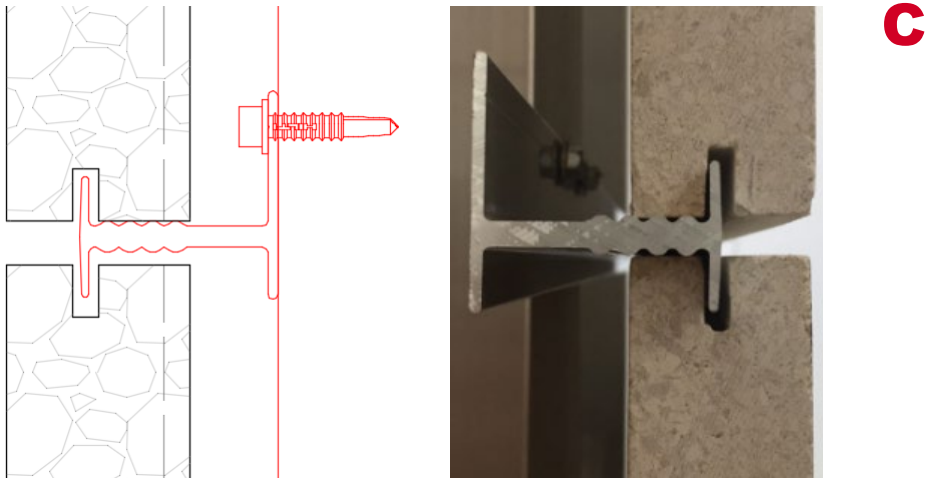


Top profile



- 2 different solutions
- Standard solution – blue
- Solution for invisible mounting – green (bottom profile)

Middle profile



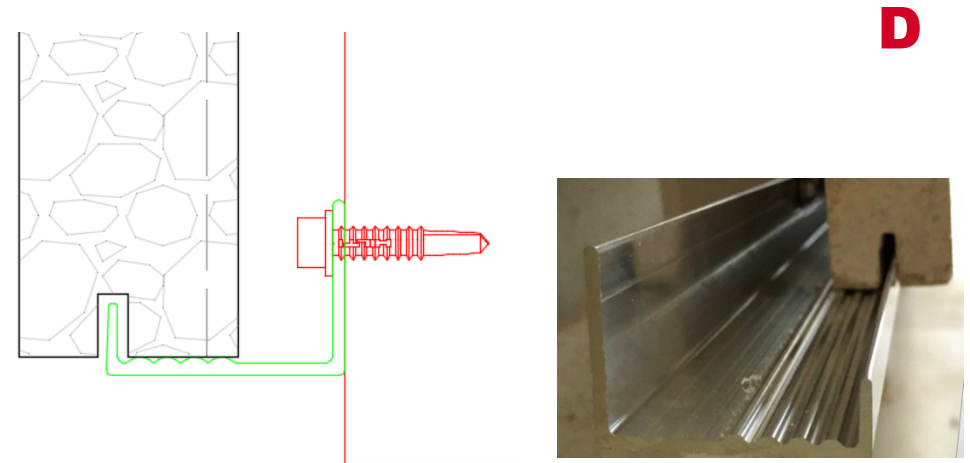
- Standard profile for horizontal joint

Joint profile - magenta



- Special profile for vertical profile joint
- Avoidance of problems through thermal expansion (vertical profile)

Bottom profile



- Bottom profile as start profile for panels