

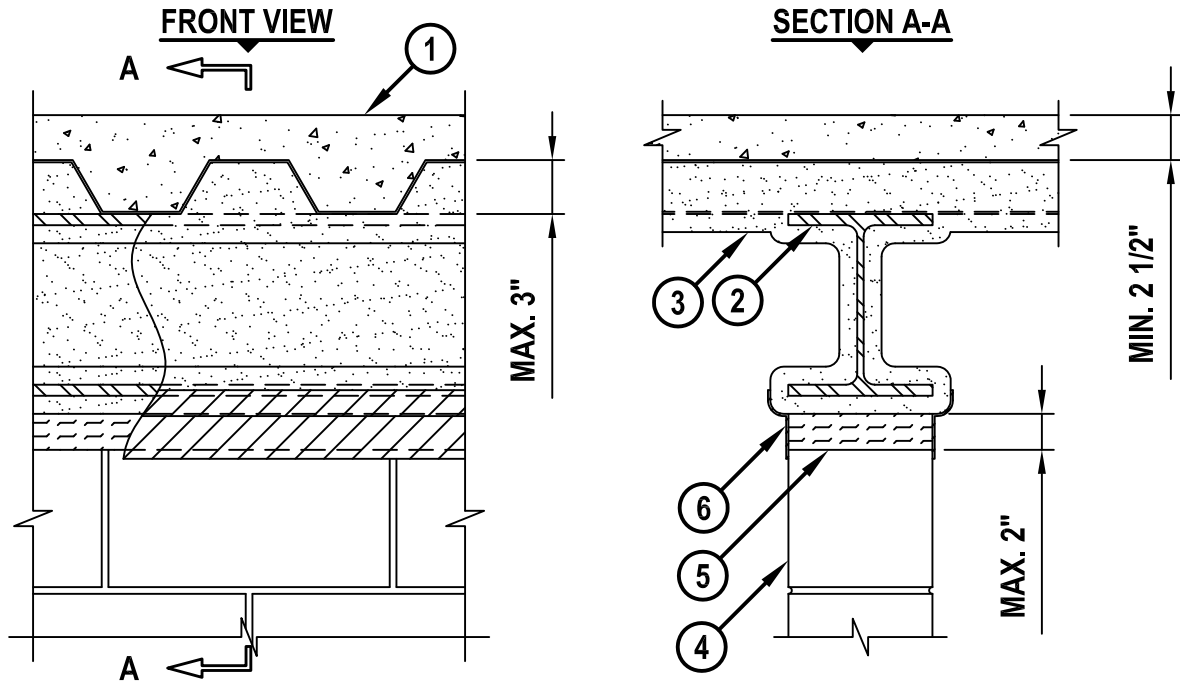
TOP OF WALL JOINT : CONCRETE WALL OR BLOCK WALL ASSEMBLY

ASSEMBLY RATING = 2-HR.

CLASS II MOVEMENT CAPABILITIES - 12.5% COMPRESSION OR EXTENSION

L-RATING AT AMBIENT = LESS THAN 1 CFM/LIN FT

L-RATING AT 400°F = LESS THAN 1 CFM/LIN FT



HWD0440d.052510

1. LIGHTWEIGHT OR NORMAL WEIGHT CONCRETE FLOOR (MIN. 2-1/2" THICK) OVER METAL DECKING (2-HR. FIRE-RATING).
2. STRUCTURAL STEEL BEAM, AS SPECIFIED IN THE INDIVIDUAL D-700 SERIES FLOOR/CEILING DESIGN, ORIENTED PARALLEL TO WALL ASSEMBLY.
3. UL CLASSIFIED MONOKOTE TYPE MK-6/HY (MANUFACTURED BY W.R. GRACE & CO.) OR TYPE 300 (MANUFACTURED BY ISOLATEK, INT.) FIREPROOFING TO COMPLETELY FILL FLUTES ABOVE STRUCTURAL STEEL BEAM AND APPLIED TO STEEL FLOOR UNITS AND STRUCTURAL STEEL SUPPORT AS SPECIFIED IN THE INDIVIDUAL D700 DESIGN CODE (SEE NOTE NO. 2 BELOW).
4. CONCRETE WALL ASSEMBLY (2-HR. FIRE-RATING) :
 - A. LIGHTWEIGHT OR NORMAL WEIGHT CONCRETE WALL (MINIMUM 8" THICK).
 - B. ANY UL/cUL CLASSIFIED CONCRETE BLOCK WALL.
5. MINIMUM 8" THICKNESS MINERAL WOOL (MIN. 4 PCF DENSITY) COMPRESSED 50%, FLUSH WITH WALL ASSEMBLY.
6. MINIMUM 1/8" (WET) THICKNESS HILTI CFS-SP WB FIRESTOP JOINT SPRAY OR HILTI CP 672 SPEED SPRAY TO COMPLETELY COVER MINERAL WOOL WITHIN JOINT. HILTI FIRESTOP SPRAY TO OVERLAP MINIMUM 1/2" ONTO CONCRETE WALL ASSEMBLY AND MINIMUM 2" ONTO FIREPROOFING ON BOTH SIDES OF WALL ASSEMBLY.

NOTES : 1. MAXIMUM WIDTH OF JOINT = 2".
 2. ADDITIONAL 1-3/8" THICKNESS MK-6/HY FIREPROOFING OR 1-1/2" THICKNESS TYPE 300 APPLIED TO EACH SIDE OF STEEL BEAM WEB.



HILTI, Inc.
 Tulsa, Oklahoma USA (800) 879-8000

Sheet	1 of 1
Scale	3/32" = 1"
Date	May 25, 2010

Drawing No.
**HWD
 0440d**