

SAMPLE CODE EVALUATION DETAIL

*****NOT FOR INSTALLATION*****

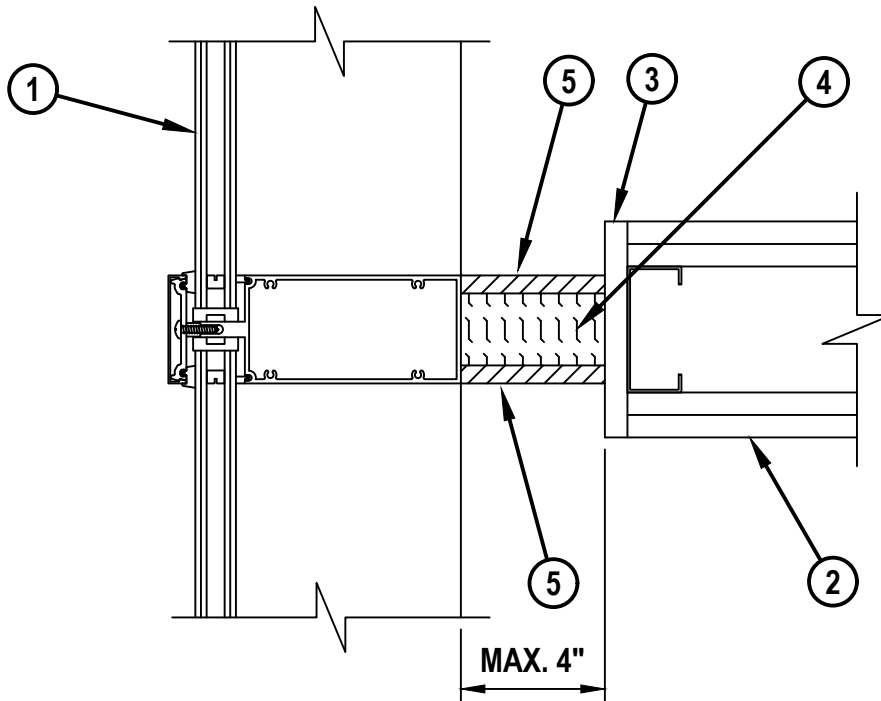
PLEASE SUBMIT AN EJ REQUEST FORM TO USFIRESTOPENG@HILTI.COM

EXTERIOR CURTAIN WALL/WALL INTERSECTION

MEETS REQUIREMENTS OF 2015 AND 2018 INTERNATIONAL BUILDING CODE (IBC) ARTICLE 715.4.2*

SUBJECT TO THE APPROVAL OF THE AUTHORITY HAVING JURISDICTION (AHJ)

TOP VIEW



1. SPANDREL OR VISION GLASS AND ALUMINUM MULLION CURTAIN WALL ASSEMBLY (NON FIRE-RATED).
2. GYPSUM WALL ASSEMBLY (UL/cUL CLASSIFIED) (1-HR. OR 2-HR. FIRE-RATING) (2-HR. SHOWN).
3. ADDITIONAL LAYER OF TYPE-X FIRE-RESISTANT GYPSUM BOARD (5/8" THICK) SECURED TO STUDS WITH APPROPRIATE STEEL FASTENERS.
4. MINERAL WOOL SAFING (MIN. 4 PCF DENSITY) COMPRESSED 33% AND RECESSED TO ACCOMMODATE SEALANT.
5. MINIMUM 1/2" DEPTH HILTI CP 606 FLEXIBLE FIRESTOP SEALANT OR HILTI CFS-S SIL GG FIRESTOP SILICONE SEALANT.

NOTES : 1. MAXIMUM WIDTH OF JOINT = 4".
2. MINERAL WOOL SAFING ONLY REQUIRED WHEN JOINT WIDTH EXCEEDS 1".

**THIS DESIGN MEETS THE FOLLOWING PERFORMANCE REQUIREMENTS: IBC 715.4.2 EXTERIOR CURTAIN WALL/ VERTICAL FIRE BARRIER INTERSECTIONS. VOIDS CREATED AT THE INTERSECTION OF NON FIRE-RESISTANCE-RATED EXTERIOR CURTAIN WALL ASSEMBLIES AND FIRE BARRIERS SHALL BE FILLED. AN APPROVED MATERIAL OR SYSTEM SHALL BE USED TO FILL THE VOID AND SHALL BE SECURELY INSTALLED IN OR ON THE INTERSECTION FOR ITS ENTIRE LENGTH SO AS NOT TO DISLODGE, LOOSEN OR OTHERWISE IMPAIR ITS ABILITY TO ACCOMMODATE EXPECTED BUILDING MOVEMENTS AND TO RETARD THE PASSAGE OF FIRE AND HOT GASES.*

(REFERENCE : UL/cUL SYSTEM NO. WW-D-0032, WW-D-0040, WW-D-0068 & WW-D-1129; INTERTEK SYSTEM NO. HI/BP 60-01)



HILTI, Inc.
 Plano, Texas USA (800) 879-8000

*****NOT FOR INSTALLATION*****

Sheet 1 of 1

Scale 3/16" = 1"

Date

TYP-CWA
VERT 23

Saving Lives through Innovation and Education