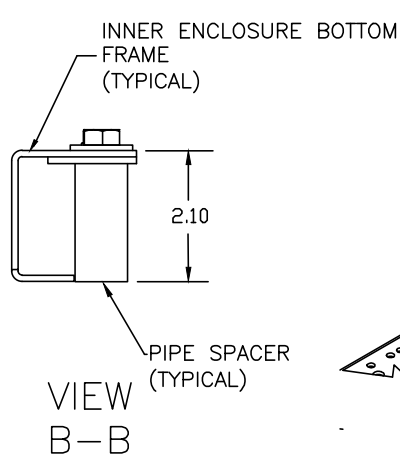
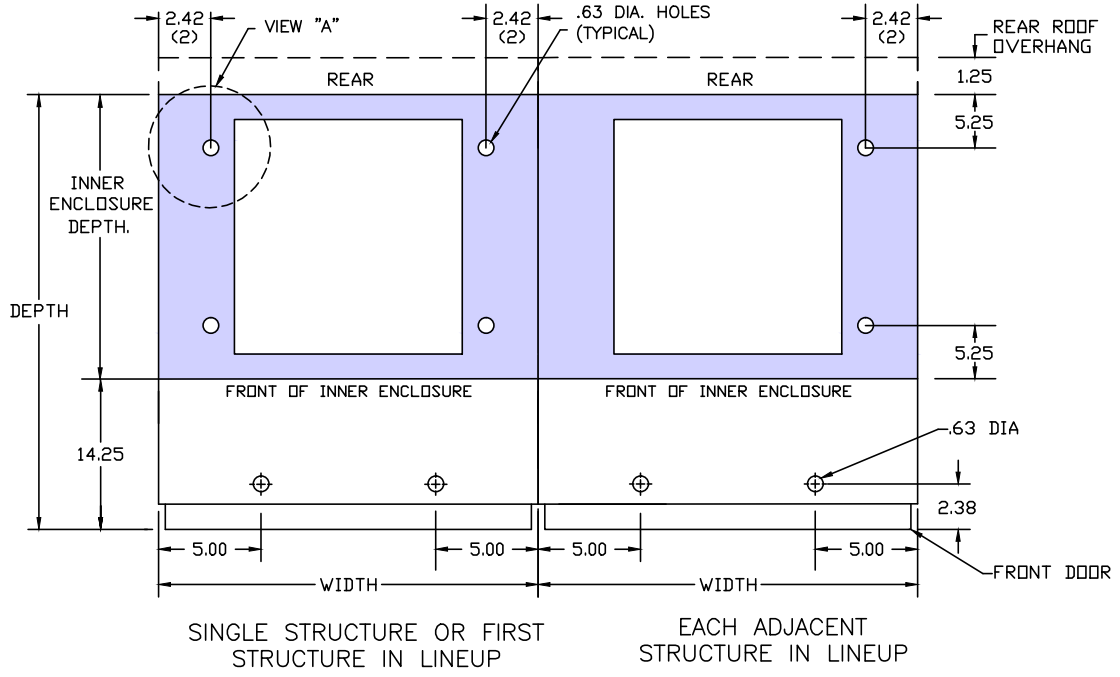
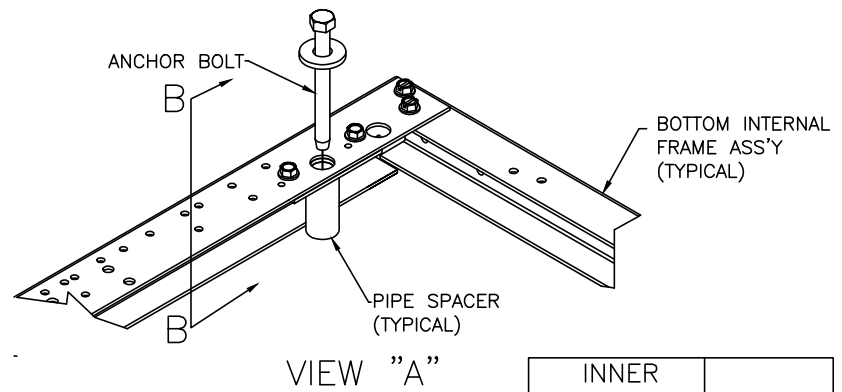


REVISION	1
RR#6117	2
ADDED DETAIL A, REVISED DEPTH DIMS. MLA/DSF 5/21/14	
UPDATED FILE TO RELOAD IN ENOVIA BA/DSF 10/30/14	3
UPDATED FILE TO RELOAD IN ENOVIA BA/DSF 12/2/14	4
ECD-126750	5
ADDED DETAIL B-B. CES/DRH 8/31/17 MLA 8/31/17	

NEMA 3R FLAT ROOF ENCLOSURE



FLOOR ANCHOR PLAN (TYPICAL INNER ENCLOSURE)



NOTES:

MOUNTING HARDWARE CHARACTERISTICS AS SEISMIC TESTED.
SAE GRADE 5 BOLTS, 1/2" -13. TORQUE VAULE = 60 FT-LBS.,
1.375 OD WASHER

INNER ENCLOSURE DEPTH	DEPTH
24D	38.25
30D	44.25
36D	50.25
48D	62.25
54D	-----
66D	-----

THE INFORMATION ON THIS DOCUMENT IS CREATED BY EATON CORPORATION. IT IS DISCLOSED IN CONFIDENCE AND IS ONLY TO BE USED FOR THE PURPOSE IN WHICH IT IS SUPPLIED.	DFTR	DRH	DATE	09/12/13	EATON	SUMTER, SC			
	APPD	MLA	DATE	09/12/13					
	APPD	MLA	DATE		TITLE	ENGINEERING DATA SHEET SEISMIC BOLT DOWN PATTERNS PRLC/PRLI SWITCHBOARDS			
					TYPE	SWITCHBOARD			
FEDERAL ID NO	PRODUCT CODE	REVISION	5	G.O.	STANDARD	DWG	1A32497	SHEET	1 OF 1