

I. CLIENT SAFETY DIRECTOR COMMENTS - FOUR BULLETS - PLEASE PROVIDE RESPONSE TO EACH ONE

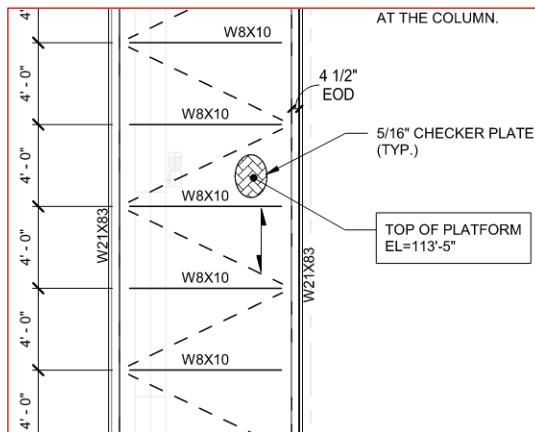
Karl,

Thank you for providing the details on this proposed fastener. I do not see a problem with this. Just a couple questions though:

- Are these a self-taping fastener
- Likelihood of backing out
- Does this take a special tool to install (down the road if we had to replace or add any)
- Is there a color option for the "disc" washer – due to not being flat to surface, could we bring visual indication to the fastener to prevent any potential trip hazard.

It probably goes without saying but I am going to say it, I would like to make sure the fastener is absolutely torqued down all the way as to not add to any tripping hazard if the fastener is sticking up any further than the 3/8".

II. EXCERPT FROM STRUCTURAL PLAN -- NOTE THAT THE W21X83 GIRDER HAS A FLANGE THICKNESS OF 13/16". THE W8X10 FLANGE THICKNESS IS 3/16". DASHED DIAGONAL MEMBERS ARE 1/4" THICK



III. EXCERPT FROM STRUCTURAL PLAN -- NOTE THAT SPECIFIES THE HILTI PRODUCTS - COMMENTS WELCOME

8.00 RAISED PATTERN FLOOR PLATE

- 8.01 RAISED PATTERN FLOOR PLATE SHALL CONFORM TO ASTM A786, WITH MINIMUM GRADE 36 MATERIAL.
- 8.02 FASTEN FLOOR PLATE USING HILTI FASTENING SYSTEM CONSISTING OF X-FCP DISKS AND X-ST-GR STUDS, PROVIDE FASTENERS AT ENDS AND AT SPACING NOT TO EXCEED 24", AT ALL CROSS BEAM, GIRDER AND ANGLE BRACES UPON WHICH THE FLOOR PLATES BEAR. MINIMUM BEARING AT CROSS BEAMS IS 2". FASTEN ACCORDING TO HILTI PUBLISHED INSTALLATION INSTRUCTIONS, INCLUDING PROVISION OF PRE-DRILLED HOLES AT FASTENER SITES.
- 8.03 FABRICATOR TO PROVIDE SUBMITTAL FOR REVIEW, INCLUDING DIAGRAM SHOWING FLOOR PLATE SECTION LENGTHS, AND FASTENER HOLE LOCATIONS.